

Anti-Lambda Light chain antibody [EPR5367-62] ab124719

重组 RabMAb

3 References **9 图像**

概述

产品名称	Anti-Lambda Light chain抗体[EPR5367-62]
描述	兔单克隆抗体[EPR5367-62] to Lambda Light chain
宿主	Rabbit
经测试应用	适用于: Flow Cyt (Intra), WB, ELISA, IHC-P, ICC/IF
种属反应性	与反应: Human
免疫原	Full length native protein (purified) corresponding to Human Lambda Light chain. Purified Human IgA.
阳性对照	WB: Human tonsil, plasma, thymus and spleen lysates. IHC-P: Human tonsil and colon tissues. ICC/IF: Ramos cells.
常规说明	<p>This product is a recombinant monoclonal antibody, which offers several advantages including:</p> <ul style="list-style-type: none"> - High batch-to-batch consistency and reproducibility - Improved sensitivity and specificity - Long-term security of supply - Animal-free production <p>For more information see here.</p> <p>Our RabMAb[®] technology is a patented hybridoma-based technology for making rabbit monoclonal antibodies. For details on our patents, please refer to RabMAb[®] patents.</p> <p>Mouse, Rat: We have preliminary internal testing data to indicate this antibody may not react with these species. Please contact us for more information.</p>

性能

形式	Liquid
存放说明	Shipped at 4°C. Store at +4°C short term (1-2 weeks). Upon delivery aliquot. Store at -20°C. Stable for 12 months at -20°C.
存储溶液	pH: 7.20 Preservative: 0.01% Sodium azide Constituents: 40% Glycerol (glycerin, glycerine), 0.05% BSA, 59% PBS
纯度	Protein A purified

克隆 单克隆
克隆编号 EPR5367-62
同种型 IgG

应用

The Abpromise guarantee **Abpromise™**承诺保证使用ab124719于以下的经测试应用

“应用说明”部分下显示的仅为推荐的起始稀释度;实际最佳的稀释度/浓度应由使用者检定。

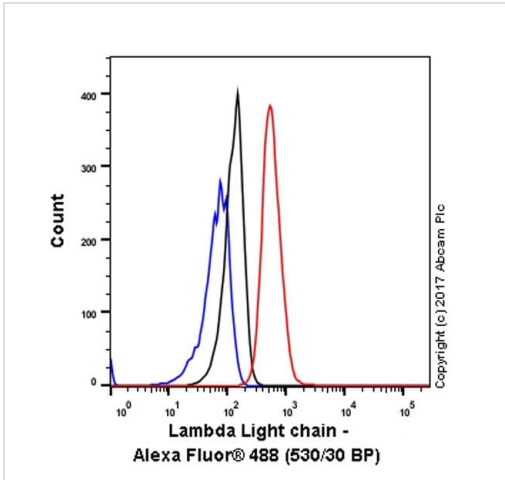
应用	Ab评论	说明
Flow Cyt (Intra)		Use at an assay dependent concentration.
WB		1/20000. Predicted molecular weight: 25 kDa. For unpurified use at 1/50000 - 1/200000.
ELISA		1/64000.
IHC-P		1/250 - 1/500. Perform heat mediated antigen retrieval before commencing with IHC staining protocol. See IHC antigen retrieval protocols .
ICC/IF		1/250. For unpurified use at 1/500 - 1/1000.

靶标

相关性 All five immunoglobulin classes share the same basic four polypeptide chain structure of two heavy-chains and two light chains. There are five heavy chain types, and two light-chain types (Kappa and Lambda) both having a molecular weight of 22.5kDa. Any heavy-chain type can associate with either light-chain type, but on any immunoglobulin molecule both light-chains are of the same type. Kappa and Lambda consist of a variable region and a constant region and can easily be differentiated by the antigenic properties of the constant region. The ratio of Kappa to Lambda is 70:30 , the vast majority of which is bound to heavy-chain in immunoglobulin. In normal individuals low levels of free light-chain are present in serum (kappa, 1.6-15.2 mg/L; Lambda, 0.4-4.2mg/L), with the occurrence of multiple myeloma or other B-cell malignancies these levels can be greatly elevated and can be found at high levels in the urine (Bence-Jones proteins).

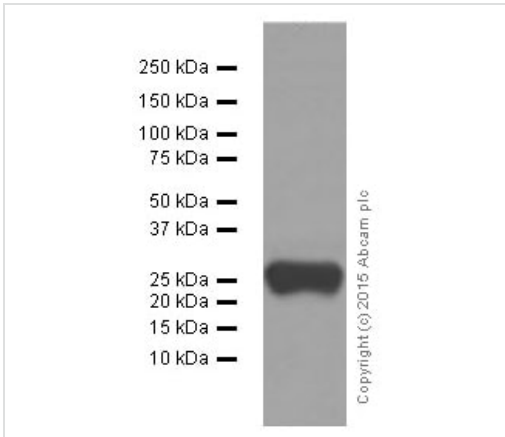
细胞定位 Cytoplasmic

图片



Flow Cytometry (Intracellular) - Anti-Lambda Light chain antibody [EPR5367-62] (ab124719)

Intracellular Flow Cytometry analysis of Ramos (human Burkitt's lymphoma) cells labeling Lambda Light chain with unpurified ab124719 at 1/50 dilution (10ug/ml) (red). Cells were fixed with 4% paraformaldehyde and permeabilised with 90% methanol. A Goat anti rabbit IgG (Alexa Fluor® 488) (1/2000 dilution) was used as the secondary antibody. Rabbit monoclonal IgG (Black) was used as the isotype control, cells without incubation with primary antibody and secondary antibody (Blue) were used as the unlabeled control.



Western blot - Anti-Lambda Light chain antibody [EPR5367-62] (ab124719)

Anti-Lambda Light chain antibody [EPR5367-62] (ab124719) at 1/100000 dilution (purified) + Human plasma lysate at 20 µg

Secondary

Peroxidase-conjugated goat anti-rabbit IgG, (H+L) at 1/1000 dilution

Predicted band size: 25 kDa

Observed band size: 25 kDa

Blocking and dilution buffer: 5% NFDm/TBST.

250 kDa —
150 kDa —
100 kDa —
75 kDa —
50 kDa —
37 kDa —
25 kDa —
20 kDa —
15 kDa —
10 kDa —



Copyright (c) 2015 Abcam plc

Western blot - Anti-Lambda Light chain antibody [EPR5367-62] (ab124719)

Anti-Lambda Light chain antibody [EPR5367-62] (ab124719) at 1/20000 dilution (purified) + Human thymus tissue lysate at 20 μ g

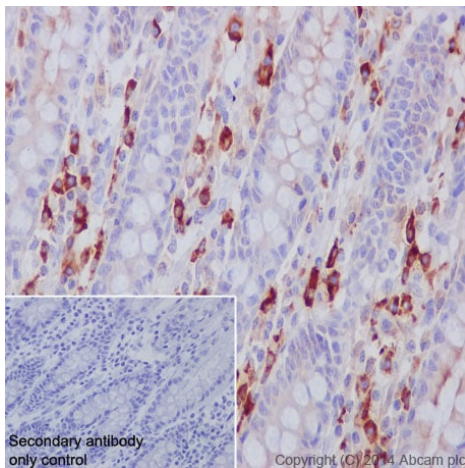
Secondary

Peroxidase-conjugated goat anti-rabbit IgG, (H+L) at 1/1000 dilution

Predicted band size: 25 kDa

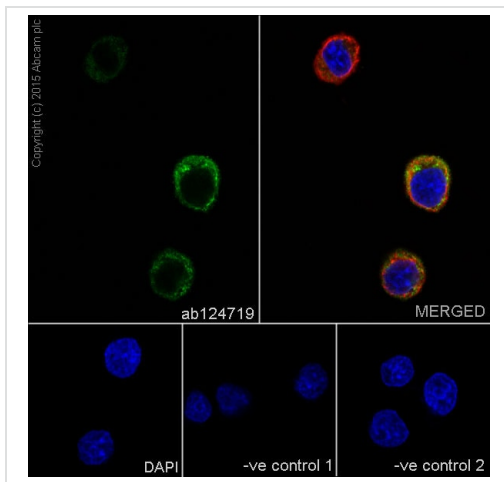
Observed band size: 25 kDa

Blocking and dilution buffer: 5% NFDm/TBST.



Immunohistochemistry (Formalin/PFA-fixed paraffin-embedded sections) - Anti-Lambda Light chain antibody [EPR5367-62] (ab124719)

Immunohistochemistry (Formalin/PFA-fixed paraffin-embedded sections) analysis of human colon tissue labelling Lambda Light chain with purified ab124719 at 1/300. Heat mediated antigen retrieval was performed using Tris/EDTA buffer pH 9. [ab97051](#), a HRP-conjugated goat anti-rabbit IgG (H+L) was used as the secondary antibody (1/500). Negative control using PBS instead of primary antibody. Counterstained with hematoxylin.

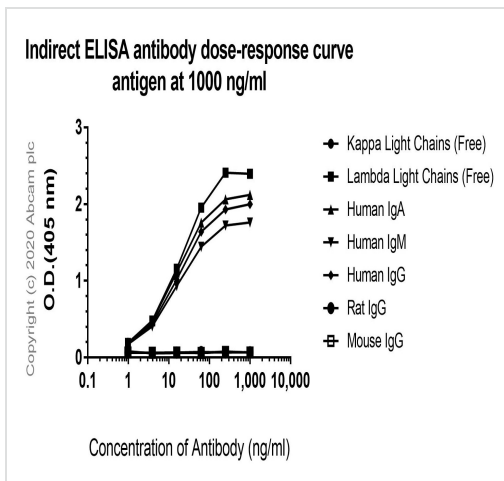


Immunocytochemistry/ Immunofluorescence - Anti-Lambda Light chain antibody [EPR5367-62] (ab124719)

Immunocytochemistry/Immunofluorescence analysis of Ramos cells labelling Lambda Light chain with purified ab124719 at 1/250. Cells were fixed with 4% paraformaldehyde and permeabilized with 0.1% Triton X-100. **ab150077**, an Alexa Fluor[®] 488-conjugated goat anti-rabbit IgG (1/500) was used as the secondary antibody. DAPI (blue) was used as the nuclear counterstain. **ab7291**, a mouse anti-tubulin (1/1000) and **ab150120**, an Alexa Fluor[®] 594-conjugated goat anti-mouse IgG (1/500) were also used.

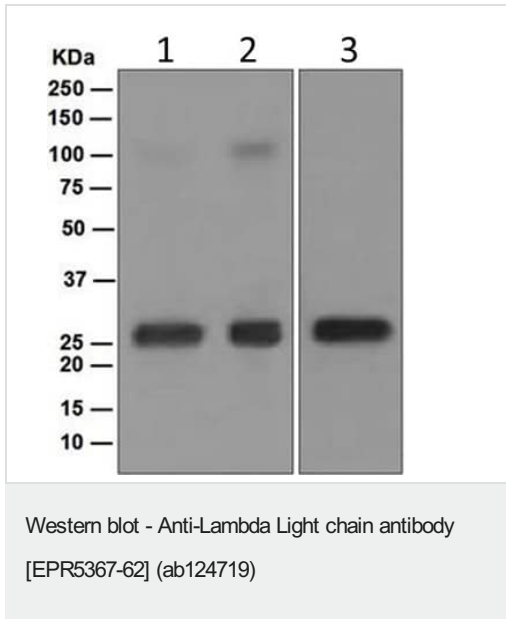
Control 1: primary antibody (1/250) and secondary antibody, **ab150120**, an Alexa Fluor[®] 594-conjugated goat anti-mouse IgG (1/500).

Control 2: **ab7291** (1/1000) and secondary antibody, **ab150077**, an Alexa Fluor[®] 488-conjugated goat anti-rabbit IgG (1/500).



ELISA - Anti-Lambda Light chain antibody [EPR5367-62] (ab124719)

ELISA analysis of Human Kappa light chain (Free), Human Lambda Light Chains (Free), Human IgA, Human IgM, Human IgG, Rat IgG, Mouse IgG at 1000 ng/mL with ab124719 at 1000~0ng/mL. An Alkaline Phosphatase-conjugated AffiniPure Goat Anti-Rabbit IgG (H+L) at 1/2500 dilution was used as the secondary antibody.



All lanes : Anti-Lambda Light chain antibody [EPR5367-62] (ab124719) at 1/50000 dilution (unpurified)

Lane 1 : Human tonsil lysate

Lane 2 : Human plasma lysate

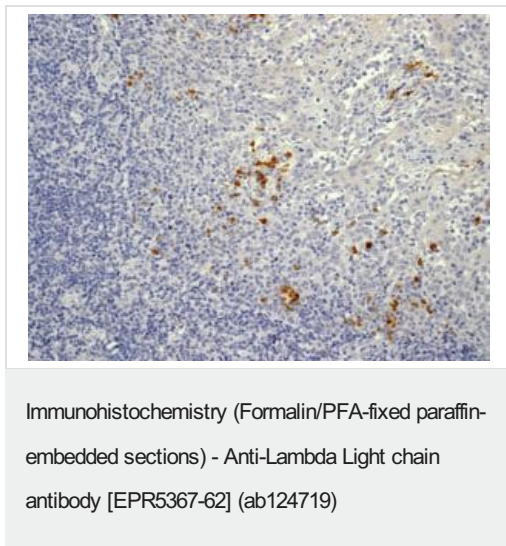
Lane 3 : Human spleen lysate

Lysates/proteins at 10 µg per lane.

Secondary

All lanes : HRP-conjugated goat anti-rabbit IgG at 1/2000 dilution

Predicted band size: 25 kDa



Immunohistochemistry (Formalin/PFA-fixed paraffin-embedded sections) analysis of human tonsil tissue labelling Lambda Light chain with unpurified ab124719 at a dilution of 1/250.

Perform heat mediated antigen retrieval before commencing with IHC staining protocol.

Why choose a recombinant antibody?



Research with confidence
Consistent and reproducible results



Long-term and scalable supply
Recombinant technology



Success from the first experiment
Confirmed specificity



Ethical standards compliant
Animal-free production

Anti-Lambda Light chain antibody [EPR5367-62]
(ab124719)

Please note: All products are "FOR RESEARCH USE ONLY. NOT FOR USE IN DIAGNOSTIC PROCEDURES"

Our Abpromise to you: Quality guaranteed and expert technical support

- Replacement or refund for products not performing as stated on the datasheet
- Valid for 12 months from date of delivery
- Response to your inquiry within 24 hours
- We provide support in Chinese, English, French, German, Japanese and Spanish
- Extensive multi-media technical resources to help you
- We investigate all quality concerns to ensure our products perform to the highest standards

If the product does not perform as described on this datasheet, we will offer a refund or replacement. For full details of the Abpromise, please visit <https://www.abcam.cn/abpromise> or contact our technical team.

Terms and conditions

- Guarantee only valid for products bought direct from Abcam or one of our authorized distributors