

Anti-LAG-3 antibody [11E3] ab40465

★★★★★ [2 Abreviews](#) [8 References](#) [1 图像](#)

概述

产品名称	Anti-LAG-3抗体[11E3]
描述	小鼠单克隆抗体[11E3] to LAG-3
宿主	Mouse
特异性	Recognizes the first N-terminal D1 domain of LAG-3.
经测试应用	适用于: ELISA, IP, IHC-Fr, ICC/IF, Flow Cyt, Blocking, IHC-P, WB
种属反应性	与反应: Human, Monkey
免疫原	Recombinant full length protein corresponding to Human LAG-3. (soluble form)
常规说明	<p>The Life Science industry has been in the grips of a reproducibility crisis for a number of years. Abcam is leading the way in addressing this with our range of recombinant monoclonal antibodies and knockout edited cell lines for gold-standard validation. Please check that this product meets your needs before purchasing.</p> <p>If you have any questions, special requirements or concerns, please send us an inquiry and/or contact our Support team ahead of purchase. Recommended alternatives for this product can be found below, along with publications, customer reviews and Q&As</p>

性能

形式	Liquid
存放说明	Shipped at 4°C. Store at +4°C short term (1-2 weeks). Upon delivery aliquot. Store at -20°C or -80°C. Avoid freeze / thaw cycle.
存储溶液	Preservative: 0.02% Sodium azide Constituents: PBS, 10% Glycerol (glycerin, glycerine)
纯度	Protein A purified
纯化说明	Purified from concentrated hybridoma tissue culture supernatant by Protein A Sepharose CL-4B Flow Fast Column. Purity >95% (SDS-PAGE).
克隆	单克隆
克隆编号	11E3
同种型	IgG1

应用

The Abpromise guarantee **Abpromise™**承诺保证使用ab40465于以下的经测试应用

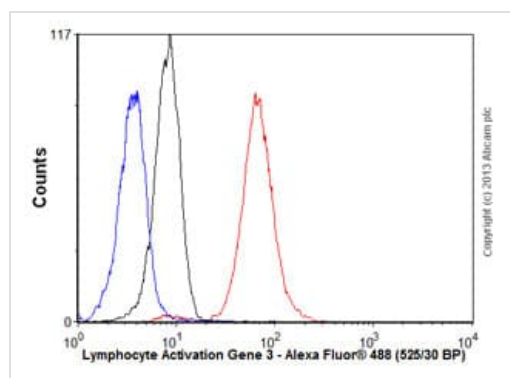
“应用说明”部分 下显示的仅为推荐的起始稀释度;实际最佳的稀释度/浓度应由使用者检定。

应用	Ab评论	说明
ELISA		Use at an assay dependent concentration.
IP		Use at an assay dependent concentration.
IHC-Fr		Use at an assay dependent concentration.
ICC/IF		Use at an assay dependent concentration.
Flow Cyt		Use 1µg for 10 ⁶ cells.
Blocking		Use at an assay dependent concentration.
IHC-P	★★★★☆ (2)	Use at an assay dependent concentration.
WB		Use at an assay dependent concentration.

靶标

功能	Involved in lymphocyte activation. Binds to HLA class-II antigens.
组织特异性	On cell surface of activated NK and T-lymphocytes.
序列相似性	Contains 3 Ig-like C2-type (immunoglobulin-like) domains. Contains 1 Ig-like V-type (immunoglobulin-like) domain.
细胞定位	Membrane.

图片



Flow Cytometry - Anti-LAG-3 antibody [11E3]
(ab40465)

Overlay histogram showing Jurkat cells stained with ab40465 (red line). The cells were fixed with 80% methanol (5 min) and then permeabilized with 0.1% PBS-Tween for 20 min. The cells were then incubated in 1x PBS / 10% normal goat serum / 0.3M glycine to block non-specific protein-protein interactions followed by the antibody (ab40465, 1µg/1x10⁶ cells) for 30 min at 22°C. The secondary antibody used was Alexa Fluor® 488 goat anti-mouse IgG (H&L) ([ab150113](#)) at 1/2000 dilution for 30 min at 22°C. Isotype control antibody (black line) was mouse IgG1 [ICIGG1] ([ab91353](#), 1µg/1x10⁶ cells) used under the same conditions. Unlabelled sample (blue line) was also used as a control. Acquisition of >5,000 events were collected using a 20mW Argon ion laser (488nm) and 525/30 bandpass filter.

Please note: All products are "FOR RESEARCH USE ONLY. NOT FOR USE IN DIAGNOSTIC PROCEDURES"

Our Abpromise to you: Quality guaranteed and expert technical support

- Replacement or refund for products not performing as stated on the datasheet
- Valid for 12 months from date of delivery
- Response to your inquiry within 24 hours

- We provide support in Chinese, English, French, German, Japanese and Spanish
- Extensive multi-media technical resources to help you
- We investigate all quality concerns to ensure our products perform to the highest standards

If the product does not perform as described on this datasheet, we will offer a refund or replacement. For full details of the Abpromise, please visit <https://www.abcam.cn/abpromise> or contact our technical team.

Terms and conditions

- Guarantee only valid for products bought direct from Abcam or one of our authorized distributors