


# Anti-Lactate Dehydrogenase B/LDH-B antibody ab195964

## 2 图像

### 概述

产品名称	Anti-Lactate Dehydrogenase B/LDH-B抗体
描述	山羊多克隆抗体to Lactate Dehydrogenase B/LDH-B
宿主	Goat
经测试应用	适用于: WB, IHC-P
种属反应性	与反应: Human 预测可用于: Horse, Guinea pig, Chimpanzee, Monkey, Gorilla, Orangutan 
免疫原	Synthetic peptide corresponding to Human Lactate Dehydrogenase B/LDH-B aa 1-100 (internal sequence) (Cysteine residue). (Near N-terminus; NP_002291.1). Database link: <a href="#">P07195</a>  <a href="#">Run BLAST with</a>  <a href="#">Run BLAST with</a>
阳性对照	Human heart and kidney lysates; Human kidney tissue.
常规说明	<p>The Life Science industry has been in the grips of a reproducibility crisis for a number of years. Abcam is leading the way in addressing this with our range of recombinant monoclonal antibodies and knockout edited cell lines for gold-standard validation. Please check that this product meets your needs before purchasing.</p> <p>If you have any questions, special requirements or concerns, please send us an inquiry and/or contact our Support team ahead of purchase. Recommended alternatives for this product can be found below, along with publications, customer reviews and Q&amp;As</p>

### 性能

形式	Liquid
存放说明	Shipped at 4°C. Store at +4°C short term (1-2 weeks). Upon delivery aliquot. Store at -20°C long term. Avoid freeze / thaw cycle.
存储溶液	pH: 7.30 Preservative: 0.02% Sodium azide Constituents: 99% Tris buffered saline, 0.5% BSA
纯度	Immunogen affinity purified
克隆	多克隆
同种型	IgG

应用

**The Abpromise guarantee**      **Abpromise™**承诺保证使用ab195964于以下的经测试应用

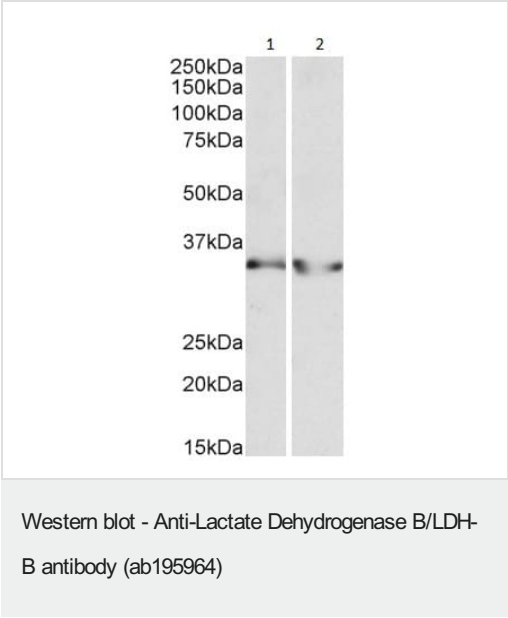
“应用说明”部分 下显示的仅为推荐的起始稀释度;实际最佳的稀释度/浓度应由使用者检定。

应用	Ab评论	说明
WB		Use a concentration of 0.3 - 1 µg/ml. Detects a band of approximately 35 kDa (predicted molecular weight: 37 kDa).
IHC-P		Use a concentration of 5 µg/ml.

靶标

通路	Fermentation; pyruvate fermentation to lactate; (S)-lactate from pyruvate: step 1/1.
疾病相关	Note=Defects in LDHB result in deficiency of lactate dehydrogenase, a condition with no clear symptomatic consequences. Lactate dehydrogenase deficiency can probably be considered a non-disease.
序列相似性	Belongs to the LDH/MDH superfamily. LDH family.
细胞定位	Cytoplasm.

图片



**All lanes :** Anti-Lactate Dehydrogenase B/LDH-B antibody (ab195964) at 0.3 µg/ml

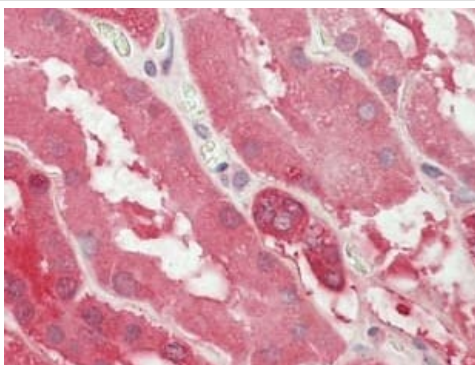
**Lane 1 :** Human heart lysate (in RIPA buffer)  
**Lane 2 :** Human kidney lysate (in RIPA buffer)

Lysates/proteins at 35 µg per lane.

Developed using the ECL technique.

**Predicted band size:** 37 kDa  
**Observed band size:** 35 kDa

Primary incubation was 1 hour.



Immunohistochemical analysis of formalin-fixed, paraffin-embedded Human kidney tissue labeling Lactate Dehydrogenase B/LDH-B with ab195964 at 5 µg/mL.

Immunohistochemistry (Formalin/PFA-fixed paraffin-embedded sections) - Anti-Lactate Dehydrogenase B/LDH-B antibody (ab195964)

**Please note:** All products are "FOR RESEARCH USE ONLY. NOT FOR USE IN DIAGNOSTIC PROCEDURES"

#### Our Abpromise to you: Quality guaranteed and expert technical support

---

- Replacement or refund for products not performing as stated on the datasheet
- Valid for 12 months from date of delivery
- Response to your inquiry within 24 hours
- We provide support in Chinese, English, French, German, Japanese and Spanish
- Extensive multi-media technical resources to help you
- We investigate all quality concerns to ensure our products perform to the highest standards

If the product does not perform as described on this datasheet, we will offer a refund or replacement. For full details of the Abpromise, please visit <https://www.abcam.cn/abpromise> or contact our technical team.

#### Terms and conditions

---

- Guarantee only valid for products bought direct from Abcam or one of our authorized distributors