


Anti-Lactate Dehydrogenase antibody [EPR1564] ab101562

重组 RabMAb

★★★★☆ **3 Abreviews** **70 References** **3 图像**

概述

产品名称	Anti-Lactate Dehydrogenase抗体[EPR1564]
描述	兔单克隆抗体[EPR1564] to Lactate Dehydrogenase
宿主	Rabbit
特异性	The immunogen for this antibody has 93% homology with L-lactate dehydrogenase C chain (P07864).
经测试应用	适用于: WB, IHC-P 不适用于: Flow Cyt, ICC/IF or IP
种属反应性	与反应: Human 预测可用于: Mouse, Rat 
免疫原	Synthetic peptide. This information is proprietary to Abcam and/or its suppliers.
阳性对照	HeLa, MCF-7, A375 and 293T cell lysates, Human Muscle tissue
常规说明	This product is a recombinant monoclonal antibody, which offers several advantages including: <ul style="list-style-type: none"> - High batch-to-batch consistency and reproducibility - Improved sensitivity and specificity - Long-term security of supply - Animal-free production For more information see here . Our RabMAb [®] technology is a patented hybridoma-based technology for making rabbit monoclonal antibodies. For details on our patents, please refer to RabMAb[®] patents .

性能

形式	Liquid
存放说明	Shipped at 4°C. Store at -20°C.
存储溶液	pH: 7.20 Preservative: 0.01% Sodium azide Constituents: 9% PBS, 40% Glycerol (glycerin, glycerine), 0.05% BSA, 50% Tissue culture supernatant
纯度	Protein A purified

克隆	单克隆
克隆编号	EPR1564
同种型	IgG

应用

The Abpromise guarantee

Abpromise™承诺保证使用ab101562于以下的经测试应用

“应用说明”部分 下显示的仅为推荐的起始稀释度;实际最佳的稀释度/浓度应由使用者检定。

应用	Ab评论	说明
WB	★☆☆☆☆ (1)	1/1000 - 1/10000. Predicted molecular weight: 37 kDa.
IHC-P	★★★★★ (1)	1/250 - 1/500. Perform heat mediated antigen retrieval with citrate buffer pH 6 before commencing with IHC staining protocol. Antigen retrieval is strongly recommended.

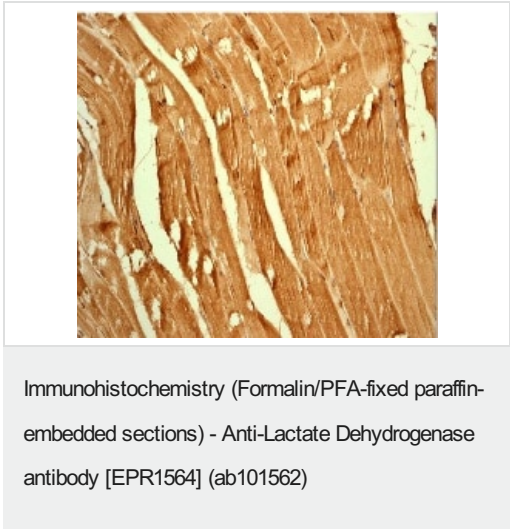
应用说明

Is unsuitable for Flow Cyt,ICC/IF or IP.

靶标

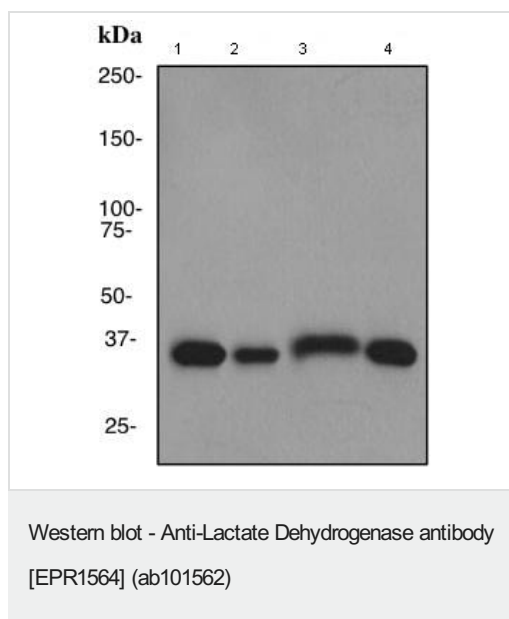
通路	Fermentation; pyruvate fermentation to lactate; (S)-lactate from pyruvate: step 1/1.
疾病相关	Defects in LDHA are the cause of glycogen storage disease type 11 (GSD11) [MIM:612933]. A metabolic disorder that results in exertional myoglobinuria, pain, cramps and easy fatigue.
序列相似性	Belongs to the LDH/MDH superfamily. LDH family.
翻译后修饰	ISGylated.
细胞定位	Cytoplasm.

图片



Staining of Human Lactate Dehydrogenase in a Formalin/PFA-fixed paraffin-embedded section of human Muscle using **ab101526** at a dilution of 1/500.

Perform heat mediated antigen retrieval with citrate buffer pH 6 before commencing with IHC staining protocol.



All lanes : Anti-Lactate Dehydrogenase antibody [EPR1564] (ab101562) at 1/1000 dilution

Lane 1 : HeLa cell lysate

Lane 2 : MCF7 cell lysate

Lane 3 : A375 cell lysate

Lane 4 : 293T cell lysate

Lysates/proteins at 10 µg per lane.

Predicted band size: 37 kDa

Why choose a recombinant antibody?

<p>Research with confidence Consistent and reproducible results</p>	<p>Long-term and scalable supply Recombinant technology</p>
<p>Success from the first experiment Confirmed specificity</p>	<p>Ethical standards compliant Animal-free production</p>

Anti-Lactate Dehydrogenase antibody [EPR1564] (ab101562)

Please note: All products are "FOR RESEARCH USE ONLY. NOT FOR USE IN DIAGNOSTIC PROCEDURES"

Our Abpromise to you: Quality guaranteed and expert technical support

- Replacement or refund for products not performing as stated on the datasheet
- Valid for 12 months from date of delivery
- Response to your inquiry within 24 hours
- We provide support in Chinese, English, French, German, Japanese and Spanish
- Extensive multi-media technical resources to help you
- We investigate all quality concerns to ensure our products perform to the highest standards

If the product does not perform as described on this datasheet, we will offer a refund or replacement. For full details of the Abpromise, please visit <https://www.abcam.cn/abpromise> or contact our technical team.

Terms and conditions

- Guarantee only valid for products bought direct from Abcam or one of our authorized distributors