


### Anti-Lactate Dehydrogenase antibody [EP1563Y] ab134187

**重组** RabMAb

**10 References** [2 图像](#)

#### 概述

产品名称	Anti-Lactate Dehydrogenase抗体[EP1563Y]
描述	兔单克隆抗体[EP1563Y] to Lactate Dehydrogenase
宿主	Rabbit
特异性	This antibody can recognize LDH-A, B, and C.
经测试应用	<b>适用于:</b> WB, IHC-P
种属反应性	<b>与反应:</b> Human <b>预测可用于:</b> Mouse, Rat 
免疫原	Synthetic peptide corresponding to Human Lactate Dehydrogenase aa 1-100.
阳性对照	A549 cell lysate; Human kidney carcinoma
常规说明	<p>For Mouse, this antibody is recommended for WB only.</p> <p>This product is a recombinant monoclonal antibody, which offers several advantages including:</p> <ul style="list-style-type: none"> <li>- High batch-to-batch consistency and reproducibility</li> <li>- Improved sensitivity and specificity</li> <li>- Long-term security of supply</li> <li>- Animal-free production</li> </ul> <p>For more information <a href="#">see here</a>.</p> <p>Our RabMAb<sup>®</sup> technology is a patented hybridoma-based technology for making rabbit monoclonal antibodies. For details on our patents, please refer to <a href="#">RabMAb<sup>®</sup> patents</a>.</p> <p>The Life Science industry has been in the grips of a reproducibility crisis for a number of years. Abcam is leading the way in addressing this with our range of recombinant monoclonal antibodies and knockout edited cell lines for gold-standard validation. Please check that this product meets your needs before purchasing.</p> <p>If you have any questions, special requirements or concerns, please send us an inquiry and/or contact our Support team ahead of purchase. Recommended alternatives for this product can be found below, along with publications, customer reviews and Q&amp;As</p>

#### 性能

**形式** Liquid

存放说明	Shipped at 4°C. Store at -20°C. Stable for 12 months at -20°C.
存储溶液	pH: 7.2 Preservative: 0.05% Sodium azide Constituents: 0.1% BSA, 40% Glycerol (glycerin, glycerine), 9.85% Tris glycine, 50% Tissue culture supernatant
纯度	Protein A purified
克隆	单克隆
克隆编号	EP1563Y
同种型	IgG

应用

The Abpromise guarantee      **Abpromise™**承诺保证使用ab134187于以下的经测试应用

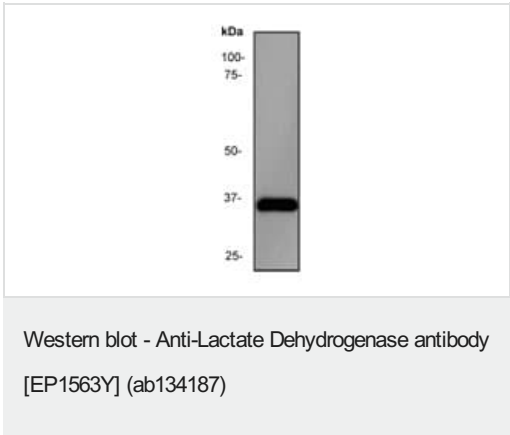
“应用说明”部分 下显示的仅为推荐的起始稀释度;实际最佳的稀释度/浓度应由使用者检定。

应用	Ab评论	说明
WB		1/1000 - 1/5000. Predicted molecular weight: 37 kDa.
IHC-P		1/100 - 1/250. Perform heat mediated antigen retrieval with citrate buffer pH 6 before commencing with IHC staining protocol.

靶标

通路	Fermentation; pyruvate fermentation to lactate; (S)-lactate from pyruvate: step 1/1.
疾病相关	Defects in LDHA are the cause of glycogen storage disease type 11 (GSD11) [MIM:612933]. A metabolic disorder that results in exertional myoglobinuria, pain, cramps and easy fatigue.
序列相似性	Belongs to the LDH/MDH superfamily. LDH family.
翻译后修饰	ISGylated.
细胞定位	Cytoplasm.

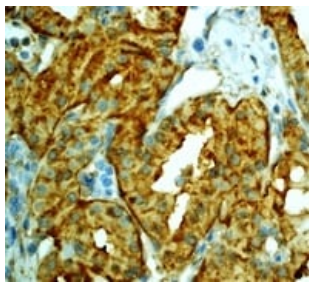
图片



Anti-Lactate Dehydrogenase antibody [EP1563Y] (ab134187) at 1/1000 dilution + A549 cell lysate at 10 µg

**Secondary**  
HRP labelled goat anti-rabbit at 1/2000 dilution

**Predicted band size:** 37 kDa



Immunohistochemistry (Formalin/PFA-fixed paraffin-embedded sections) - Anti-Lactate Dehydrogenase antibody [EP1563Y] (ab134187)

Immunohistochemical analysis of paraffin-embedded Human kidney carcinoma labelling Lactate Dehydrogenase with ab134187 at 1/100 dilution.

Perform heat mediated antigen retrieval with citrate buffer pH 6 before commencing with IHC staining protocol.

**Please note:** All products are "FOR RESEARCH USE ONLY. NOT FOR USE IN DIAGNOSTIC PROCEDURES"

### Our Abpromise to you: Quality guaranteed and expert technical support

---

- Replacement or refund for products not performing as stated on the datasheet
- Valid for 12 months from date of delivery
- Response to your inquiry within 24 hours
- We provide support in Chinese, English, French, German, Japanese and Spanish
- Extensive multi-media technical resources to help you
- We investigate all quality concerns to ensure our products perform to the highest standards

If the product does not perform as described on this datasheet, we will offer a refund or replacement. For full details of the Abpromise, please visit <https://www.abcam.cn/abpromise> or contact our technical team.

### Terms and conditions

---

- Guarantee only valid for products bought direct from Abcam or one of our authorized distributors