


Anti-Lactate Dehydrogenase antibody ab191332

[17 References](#) [1 图像](#)

概述

产品名称	Anti-Lactate Dehydrogenase抗体
描述	山羊多克隆抗体 to Lactate Dehydrogenase
宿主	Goat
经测试应用	适用于: WB
种属反应性	与反应: Human 预测可用于: Mammals 
免疫原	Full length native protein (purified) corresponding to Rabbit Lactate Dehydrogenase aa 1 to the C-terminus. (Isolated from rabbit muscle). Database link: P13491

 [Run BLAST with](#)

 [Run BLAST with](#)

常规说明

The Life Science industry has been in the grips of a reproducibility crisis for a number of years. Abcam is leading the way in addressing this with our range of recombinant monoclonal antibodies and knockout edited cell lines for gold-standard validation. Please check that this product meets your needs before purchasing.

If you have any questions, special requirements or concerns, please send us an inquiry and/or contact our Support team ahead of purchase. Recommended alternatives for this product can be found below, along with publications, customer reviews and Q&As

性能

形式	Liquid
存放说明	Shipped at 4°C. Store at +4°C short term (1-2 weeks). Upon delivery aliquot. Store at -20°C long term. Avoid freeze / thaw cycle.
存储溶液	pH: 6.50 Preservative: 0.01% Sodium azide Constituents: 0.87% Sodium chloride, 0.42% Potassium phosphate
纯度	IgG fraction
纯化说明	ab191332 is an IgG fraction antibody purified from monospecific antiserum by a multi-step process which includes delipidation, salt fractionation and ion exchange chromatography followed by extensive dialysis against buffer.
克隆	多克隆

同种型

IgG

应用

The Abpromise guarantee

Abpromise™ 承诺保证使用 ab191332 于以下的经测试应用

“应用说明”部分 下显示的仅为推荐的起始稀释度;实际最佳的稀释度/浓度应由使用者检定。

应用	Ab评论	说明
WB		1/1000 - 1/5000. Detects a band of approximately 36 kDa (predicted molecular weight: 37 kDa).

靶标

通路

Fermentation; pyruvate fermentation to lactate; (S)-lactate from pyruvate: step 1/1.

疾病相关

Defects in LDHA are the cause of glycogen storage disease type 11 (GSD11) [MIM:612933]. A metabolic disorder that results in exertional myoglobinuria, pain, cramps and easy fatigue.

序列相似性

Belongs to the LDH/MDH superfamily. LDH family.

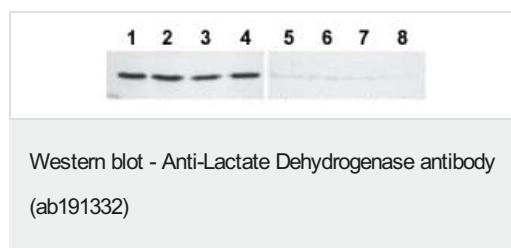
翻译后修饰

ISGylated.

细胞定位

Cytoplasm.

图片



All lanes : Anti-Lactate Dehydrogenase antibody (ab191332) at 1/400 dilution

Lanes 1-4 : HeLa cell extract cytoplasmic fraction

Lanes 5-8 : HeLa cell extract nuclear fraction

Lysates/proteins at 30 µg per lane.

Secondary

All lanes : IRDye800™ secondary antibody at 1/10000 dilution

Predicted band size: 37 kDa

Observed band size: 36 kDa

Please note: All products are "FOR RESEARCH USE ONLY. NOT FOR USE IN DIAGNOSTIC PROCEDURES"

Our Abpromise to you: Quality guaranteed and expert technical support

- Replacement or refund for products not performing as stated on the datasheet
- Valid for 12 months from date of delivery
- Response to your inquiry within 24 hours

- We provide support in Chinese, English, French, German, Japanese and Spanish
- Extensive multi-media technical resources to help you
- We investigate all quality concerns to ensure our products perform to the highest standards

If the product does not perform as described on this datasheet, we will offer a refund or replacement. For full details of the Abpromise, please visit <https://www.abcam.cn/abpromise> or contact our technical team.

Terms and conditions

- Guarantee only valid for products bought direct from Abcam or one of our authorized distributors