


# Anti-L3MBTL3 antibody ab99928

## 2 图像

### 概述

产品名称	Anti-L3MBTL3抗体
描述	兔多克隆抗体to L3MBTL3
宿主	Rabbit
经测试应用	适用于: IHC-P, IP
种属反应性	与反应: Human 预测可用于: Rabbit, Horse, Cow, Pig, Chimpanzee, Rhesus monkey, Gorilla, Orangutan 
免疫原	Synthetic peptide, corresponding to a region within amino acids 550-600 of Human L3MBTL3 (NP_115814.1)
阳性对照	HeLa cells
常规说明	<p>The Life Science industry has been in the grips of a reproducibility crisis for a number of years. Abcam is leading the way in addressing this with our range of recombinant monoclonal antibodies and knockout edited cell lines for gold-standard validation. Please check that this product meets your needs before purchasing.</p> <p>If you have any questions, special requirements or concerns, please send us an inquiry and/or contact our Support team ahead of purchase. Recommended alternatives for this product can be found below, along with publications, customer reviews and Q&amp;As</p>

### 性能

形式	Liquid
存放说明	Shipped at 4°C. Upon delivery aliquot and store at -20°C. Avoid freeze / thaw cycles.
存储溶液	pH: 7 Preservative: 0.09% Sodium azide Constituent: Tris citrate/phosphate
纯度	Immunogen affinity purified
克隆	多克隆
同种型	IgG

### 应用

## The Abpromise guarantee

**Abpromise™**承诺保证使用ab99928于以下的经测试应用

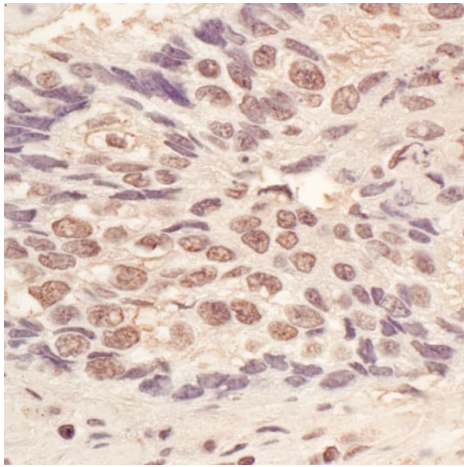
“应用说明”部分 下显示的仅为推荐的起始稀释度;实际最佳的稀释度/浓度应由使用者检定。

应用	Ab评论	说明
IHC-P		1/500 - 1/2000. Perform heat mediated antigen retrieval with citrate buffer pH 6 before commencing with IHC staining protocol.
IP		Use at 2-5 µg/mg of lysate.

## 靶标

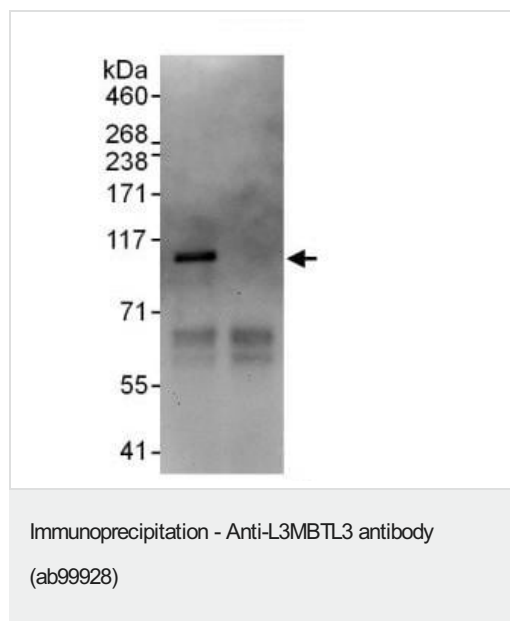
功能	Putative Polycomb group (PcG) protein. PcG proteins maintain the transcriptionally repressive state of genes, probably via a modification of chromatin, rendering it heritably changed in its expressibility. Required for normal maturation of myeloid progenitor cells.
序列相似性	Contains 3 MBT repeats. Contains 1 SAM (sterile alpha motif) domain.
细胞定位	Nucleus.

## 图片



Immunohistochemistry (Formalin/PFA-fixed paraffin-embedded sections) analysis of human lung carcinoma tissue labelling L3MBTL3 with ab99928 at 1/1000 (1 µg/ml). Detection: Peroxidase Substrate.

Immunohistochemistry (Formalin/PFA-fixed paraffin-embedded sections) - Anti-L3MBTL3 antibody (ab99928)



Immunoprecipitation analysis of HeLa whole cell lysate (1mg/IP; 20% of IP loaded/lane) using ab99928 at 3µg/mg lysate. A rabbit anti-human L3MBTL3 was used for the western blot at 1µg/ml.

Left Lane - ab99928 IP, Right Lane - control IgG.

**Please note:** All products are "FOR RESEARCH USE ONLY. NOT FOR USE IN DIAGNOSTIC PROCEDURES"

### Our Abpromise to you: Quality guaranteed and expert technical support

- Replacement or refund for products not performing as stated on the datasheet
- Valid for 12 months from date of delivery
- Response to your inquiry within 24 hours
- We provide support in Chinese, English, French, German, Japanese and Spanish
- Extensive multi-media technical resources to help you
- We investigate all quality concerns to ensure our products perform to the highest standards

If the product does not perform as described on this datasheet, we will offer a refund or replacement. For full details of the Abpromise, please visit <https://www.abcam.cn/abpromise> or contact our technical team.

### Terms and conditions

- Guarantee only valid for products bought direct from Abcam or one of our authorized distributors