

### Anti-Ku80 antibody [5C5] ab119935

★★★★★ [7 Abreviews](#) [11 References](#) [6 图像](#)

#### 概述

<b>产品名称</b>	Anti-Ku80抗体[5C5]
<b>描述</b>	小鼠单克隆抗体[5C5] to Ku80
<b>宿主</b>	Mouse
<b>经测试应用</b>	<b>适用于:</b> WB, ELISA, IHC-P, Flow Cyt, ICC/IF
<b>种属反应性</b>	<b>与反应:</b> Mouse, Human
<b>免疫原</b>	Recombinant fragment, corresponding to amino acids 61-340 of Human Ku80
<b>阳性对照</b>	HeLa, MCF7, A549 and NIH3T3 cell lysates, Human tonsil and Human colon cancer tissues, Hela cells, recombinant Ku80 protein
<b>常规说明</b>	<p>This product was changed from ascites to supernatant. Lot no's high than GR133722-19 are from Tissue Culture Supernatant</p> <p>The Life Science industry has been in the grips of a reproducibility crisis for a number of years. Abcam is leading the way in addressing this with our range of recombinant monoclonal antibodies and knockout edited cell lines for gold-standard validation. Please check that this product meets your needs before purchasing.</p> <p>If you have any questions, special requirements or concerns, please send us an inquiry and/or contact our Support team ahead of purchase. Recommended alternatives for this product can be found below, along with publications, customer reviews and Q&amp;As</p>

#### 性能

<b>形式</b>	Liquid
<b>存放说明</b>	Shipped at 4°C. Store at +4°C short term (1-2 weeks). Store at -20°C long term.
<b>存储溶液</b>	Preservative: 0.05% Sodium azide Constituent: PBS
<b>纯度</b>	Protein G purified
<b>纯化说明</b>	Purified from tissue culture supernatant.
<b>克隆</b>	单克隆
<b>克隆编号</b>	5C5
<b>同种型</b>	IgG1

## 应用

### The Abpromise guarantee

**Abpromise™**承诺保证使用ab119935于以下的经测试应用

“应用说明”部分 下显示的仅为推荐的起始稀释度;实际最佳的稀释度/浓度应由使用者检定。

应用	Ab评论	说明
WB	★★★★★ (2)	1/500 - 1/2000. Detects a band of approximately 86 kDa (predicted molecular weight: 83 kDa).
ELISA		1/10000.
IHC-P	★★★★★ (1)	1/200 - 1/1000.
Flow Cyt		1/200 - 1/400. <b>ab170190</b> - Mouse monoclonal IgG1, is suitable for use as an isotype control with this antibody.
ICC/IF	★★★★★ (3)	1/200 - 1/1000.

## 靶标

### 功能

Single stranded DNA-dependent ATP-dependent helicase. Has a role in chromosome translocation. The DNA helicase II complex binds preferentially to fork-like ends of double-stranded DNA in a cell cycle-dependent manner. It works in the 3'-5' direction. Binding to DNA may be mediated by XRCC6. Involved in DNA non-homologous end joining (NHEJ) required for double-strand break repair and V(D)J recombination. The XRCC5/6 dimer acts as regulatory subunit of the DNA-dependent protein kinase complex DNA-PK by increasing the affinity of the catalytic subunit PRKDC to DNA by 100-fold. The XRCC5/6 dimer is probably involved in stabilizing broken DNA ends and bringing them together. The assembly of the DNA-PK complex to DNA ends is required for the NHEJ ligation step. In association with NAA15, the XRCC5/6 dimer binds to the osteocalcin promoter and activates osteocalcin expression. The XRCC5/6 dimer probably also acts as a 5'-deoxyribose-5-phosphate lyase (5'-dRP lyase), by catalyzing the beta-elimination of the 5' deoxyribose-5-phosphate at an abasic site near double-strand breaks. XRCC5 probably acts as the catalytic subunit of 5'-dRP activity, and allows to 'clean' the termini of abasic sites, a class of nucleotide damage commonly associated with strand breaks, before such broken ends can be joined. The XRCC5/6 dimer together with APEX1 acts as a negative regulator of transcription.

### 序列相似性

Belongs to the ku80 family.  
Contains 1 Ku domain.

### 发展阶段

Expression increases during promyelocyte differentiation.

### 结构域

The EEXXXDDL motif is required for the interaction with catalytic subunit PRKDC and its recruitment to sites of DNA damage.

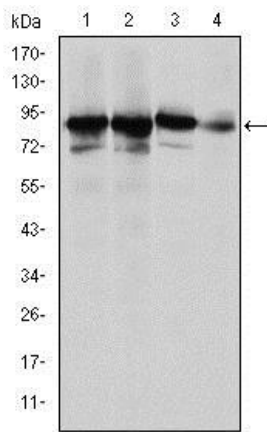
### 翻译后修饰

Phosphorylated on serine residues. Phosphorylation by PRKDC may enhance helicase activity. Sumoylated.

### 细胞定位

Nucleus. Chromosome.

## 图片



Western blot - Anti-Ku80 antibody [5C5] (ab119935)

**All lanes :** Anti-Ku80 antibody [5C5] (ab119935) at 1/500 dilution

**Lane 1 :** HeLa cell lysate

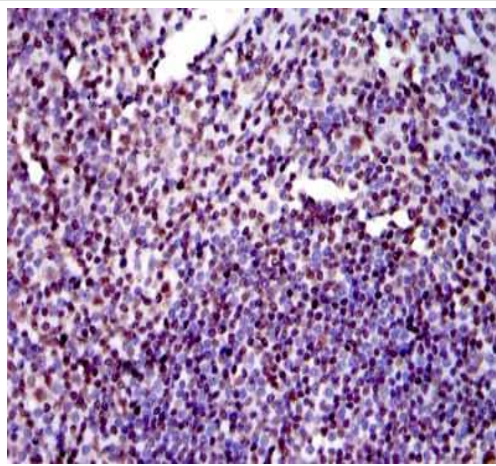
**Lane 2 :** MCF7 cell lysate

**Lane 3 :** A549 cell lysate

**Lane 4 :** NIH3T3 cell lysate

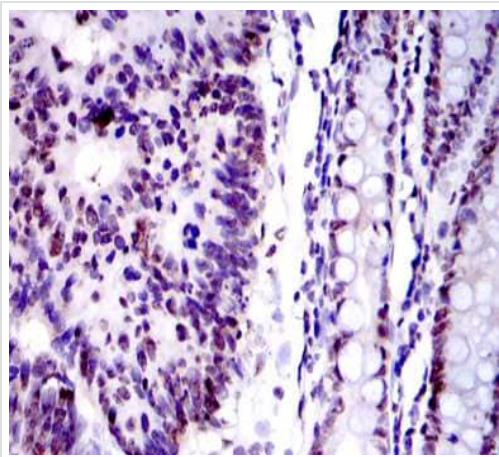
**Predicted band size:** 83 kDa

**Observed band size:** 85 kDa



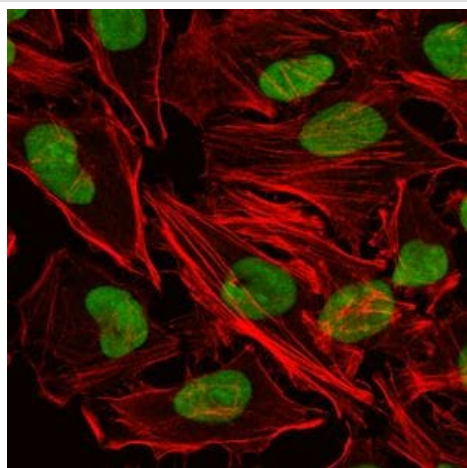
Immunohistochemical analysis of paraffin-embedded Human tonsil tissues using ab119935 at a dilution of 1/200 with DAB staining.

Immunohistochemistry (Formalin/PFA-fixed paraffin-embedded sections) - Anti-Ku80 antibody [5C5] (ab119935)



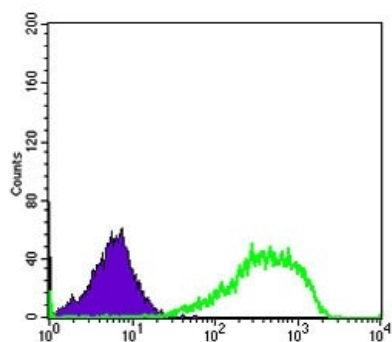
Immunohistochemical analysis of paraffin-embedded Human colon cancer tissue using ab119935 at a dilution of 1/200 with DAB staining.

Immunohistochemistry (Formalin/PFA-fixed paraffin-embedded sections) - Anti-Ku80 antibody [5C5] (ab119935)



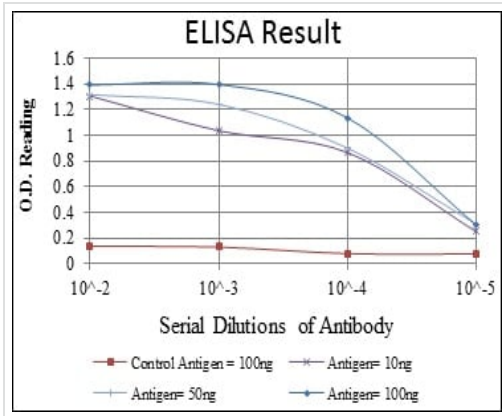
Immunofluorescence analysis of HeLa cells using ab119935 at a dilution of 1/200 (green). Red: Actin filaments have been labeled with Alexa Fluor-555 phalloidin.

Immunocytochemistry/ Immunofluorescence - Anti-Ku80 antibody [5C5] (ab119935)



Flow cytometric analysis of HeLa cells using ab119935 at a dilution of 1/200 (green) and negative control (purple).

Flow Cytometry - Anti-Ku80 antibody [5C5] (ab119935)



ELISA, using ab119935 at a dilution of 1/10000.

ELISA - Anti-Ku80 antibody [5C5] (ab119935)

**Please note:** All products are "FOR RESEARCH USE ONLY. NOT FOR USE IN DIAGNOSTIC PROCEDURES"

### Our Abpromise to you: Quality guaranteed and expert technical support

- Replacement or refund for products not performing as stated on the datasheet
- Valid for 12 months from date of delivery
- Response to your inquiry within 24 hours
- We provide support in Chinese, English, French, German, Japanese and Spanish
- Extensive multi-media technical resources to help you
- We investigate all quality concerns to ensure our products perform to the highest standards

If the product does not perform as described on this datasheet, we will offer a refund or replacement. For full details of the Abpromise, please visit <https://www.abcam.cn/abpromise> or contact our technical team.

### Terms and conditions

- Guarantee only valid for products bought direct from Abcam or one of our authorized distributors