

# Anti-KSR1 (phospho S404) antibody [EP2358Y] ab76248

RabMAb

## 2 图像

### 概述

产品名称	Anti-KSR1 (phospho S404)抗体[EP2358Y]
描述	兔单克隆抗体[EP2358Y] to KSR1 (phospho S404)
宿主	Rabbit
经测试应用	<b>适用于:</b> ICC/IF, WB <b>不适用于:</b> Flow Cyt, IHC-P or IP
种属反应性	<b>与反应:</b> Human
免疫原	Synthetic peptide. This information is proprietary to Abcam and/or its suppliers.
阳性对照	WB: HeLa cell lysates, untreated or treated with Calyculin A ICC/IF: Sh-SY-5Y cells
常规说明	Our RabMAb <sup>®</sup> technology is a patented hybridoma-based technology for making rabbit monoclonal antibodies. For details on our patents, please refer to <a href="#">RabMAb<sup>®</sup> patents</a> .  The Life Science industry has been in the grips of a reproducibility crisis for a number of years. Abcam is leading the way in addressing this with our range of recombinant monoclonal antibodies and knockout edited cell lines for gold-standard validation. Please check that this product meets your needs before purchasing.  If you have any questions, special requirements or concerns, please send us an inquiry and/or contact our Support team ahead of purchase. Recommended alternatives for this product can be found below, along with publications, customer reviews and Q&As  Mouse, Rat: We have preliminary internal testing data to indicate this antibody may not react with these species. Please contact us for more information.

### 性能

形式	Liquid
存放说明	Shipped at 4°C. Store at -20°C. Stable for 12 months at -20°C.
存储溶液	pH: 7.20 Preservative: 0.05% Sodium azide Constituents: 0.1% BSA, 40% Glycerol (glycerin, glycerine), 9.85% Tris glycine, 50% Tissue culture supernatant
纯度	Tissue culture supernatant

克隆	单克隆
克隆编号	EP2358Y
同种型	IgG

## 应用

**The Abpromise guarantee**      **Abpromise™承诺保证使用ab76248于以下的经测试应用**

“应用说明”部分下显示的仅为推荐的起始稀释度;实际最佳的稀释度/浓度应由使用者检定。

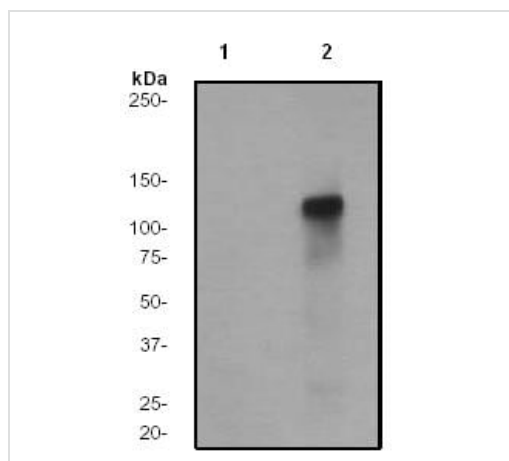
应用	Ab评论	说明
ICC/IF		1/100 - 1/250.
WB		1/1000 - 1/10000. Predicted molecular weight: 102 kDa.

**应用说明** Is unsuitable for Flow Cyt, IHC-P or IP.

## 靶标

功能	Location-regulated scaffolding protein connecting MEK to RAF. Promotes MEK and RAF phosphorylation and activity through assembly of an activated signaling complex. By itself, it has no demonstrated kinase activity.
序列相似性	Belongs to the protein kinase superfamily. TKL Ser/Thr protein kinase family. Contains 1 phorbol-ester/DAG-type zinc finger. Contains 1 protein kinase domain.
翻译后修饰	Phosphorylated on Ser-309 and, to a higher extent, on Ser-404 by MARK3. Dephosphorylated on Ser-404 by PPP2CA. In resting cells, phosphorylated KSR1 is cytoplasmic and in stimulated cells, dephosphorylated KSR1 is membrane-associated.
细胞定位	Cytoplasm. Membrane. In unstimulated cells, where the phosphorylated form is bound to a 14-3-3 protein, sequestration in the cytoplasm occurs. Following growth factor treatment, the protein is free for membrane translocation, and it moves from the cytoplasm to the cell periphery.

图片



Western blot - Anti-KSR1 (phospho S404) antibody [EP2358Y] (ab76248)

**All lanes :** Anti-KSR1 (phospho S404) antibody [EP2358Y] (ab76248) at 1/2000 dilution

**Lane 1 :** HeLa cell lysate (untreated)

**Lane 2 :** HeLa cell lysate, treated with Calyculin A

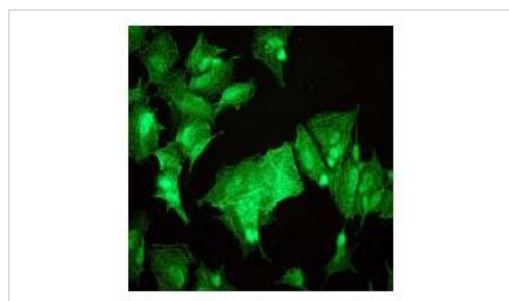
Lysates/proteins at 10 µg per lane.

#### Secondary

**All lanes :** Goat anti-rabbit HRP labelled IgG at 1/1000 dilution

**Predicted band size:** 102 kDa

**Observed band size:** 110 kDa



Immunocytochemistry/ Immunofluorescence - KSR1 (phospho S404) antibody [EP2358Y] (ab76248)

Immunofluorescent staining of Sh-SY-5Y cells, using ab76248, at 1/100 dilution.

**Please note:** All products are "FOR RESEARCH USE ONLY. NOT FOR USE IN DIAGNOSTIC PROCEDURES"

### Our Abpromise to you: Quality guaranteed and expert technical support

- Replacement or refund for products not performing as stated on the datasheet
- Valid for 12 months from date of delivery
- Response to your inquiry within 24 hours
- We provide support in Chinese, English, French, German, Japanese and Spanish
- Extensive multi-media technical resources to help you
- We investigate all quality concerns to ensure our products perform to the highest standards

If the product does not perform as described on this datasheet, we will offer a refund or replacement. For full details of the Abpromise, please visit <https://www.abcam.cn/abpromise> or contact our technical team.

### Terms and conditions

- Guarantee only valid for products bought direct from Abcam or one of our authorized distributors