


Anti-KPNA2 antibody ab84440

★★★★★ [1 Abreviews](#) [26 References](#) [5 图像](#)

概述

| | |
|-------|---|
| 产品名称 | Anti-KPNA2抗体 |
| 描述 | 兔多克隆抗体to KPNA2 |
| 宿主 | Rabbit |
| 经测试应用 | 适用于: IHC-P, WB |
| 种属反应性 | 与反应: Mouse, Human 预测可用于: Chimpanzee, Orangutan  |
| 免疫原 | Synthetic peptide corresponding to a region within C terminal amino acids 475-529 (ALQNHENESV YKASLSLIEK YFSVEEEEDQ NVVPETTSEG YTFQVQDGAP GTFNF) of human KPNA2 (NP_002257.1). Run BLAST with ExPASy Run BLAST with NCBI |
| 常规说明 | Concentration is optimized for IHC and not determined |

The Life Science industry has been in the grips of a reproducibility crisis for a number of years. Abcam is leading the way in addressing this with our range of recombinant monoclonal antibodies and knockout edited cell lines for gold-standard validation. Please check that this product meets your needs before purchasing.

If you have any questions, special requirements or concerns, please send us an inquiry and/or contact our Support team ahead of purchase. Recommended alternatives for this product can be found below, along with publications, customer reviews and Q&As

性能

| | |
|------|---|
| 形式 | Liquid |
| 存放说明 | Shipped at 4°C. Upon delivery aliquot and store at -20°C. Avoid freeze / thaw cycles. |
| 存储溶液 | pH: 6.8 Preservative: 0.09% Sodium azide Constituents: 0.1% BSA, Tris buffered saline |
| 纯度 | Immunogen affinity purified |
| 克隆 | 多克隆 |
| 同种型 | IgG |

应用

The Abpromise guarantee **Abpromise™**承诺保证使用ab84440于以下的经测试应用

“应用说明”部分 下显示的仅为推荐的起始稀释度;实际最佳的稀释度/浓度应由使用者检定。

| 应用 | Ab评论 | 说明 |
|-------|-----------|--|
| IHC-P | | 1/100 - 1/500. |
| WB | ★★★★★ (1) | Use at an assay dependent concentration. Predicted molecular weight: 57 kDa. |

靶标

功能 Functions in nuclear protein import as an adapter protein for nuclear receptor KPNB1. Binds specifically and directly to substrates containing either a simple or bipartite NLS motif. Docking of the importin/substrate complex to the nuclear pore complex (NPC) is mediated by KPNB1 through binding to nucleoporin FxFG repeats and the complex is subsequently translocated through the pore by an energy requiring, Ran-dependent mechanism. At the nucleoplasmic side of the NPC, Ran binds to importin-beta and the three components separate and importin-alpha and -beta are re-exported from the nucleus to the cytoplasm where GTP hydrolysis releases Ran from importin. The directionality of nuclear import is thought to be conferred by an asymmetric distribution of the GTP- and GDP-bound forms of Ran between the cytoplasm and nucleus.

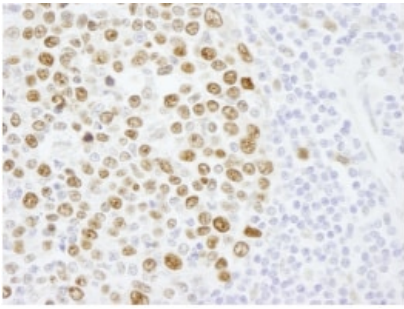
组织特异性 Expressed ubiquitously.

序列相似性 Belongs to the importin alpha family.
Contains 10 ARM repeats.
Contains 1 IBB domain.

结构域 Consists of an N-terminal hydrophilic region, a hydrophobic central region composed of 10 repeats, and a short hydrophilic C-terminus. The N-terminal hydrophilic region contains the importin beta binding domain (IBB domain), which is sufficient for binding importin beta and essential for nuclear protein import.
The IBB domain is thought to act as an intrasteric autoregulatory sequence by interacting with the internal autoinhibitory NLS. Binding of KPNB1 probably overlaps the internal NLS and contributes to a high affinity for cytoplasmic NLS-containing cargo substrates. After dissociation of the importin/substrate complex in the nucleus the internal autoinhibitory NLS contributes to a low affinity for nuclear NLS-containing proteins.
The major and minor NLS binding sites are mainly involved in recognition of simple or bipartite NLS motifs. Structurally located within in a helical surface groove they contain several conserved Trp and Asn residues of the corresponding third helices (H3) of ARM repeats which mainly contribute to binding.

细胞定位 Cytoplasm. Nucleus.

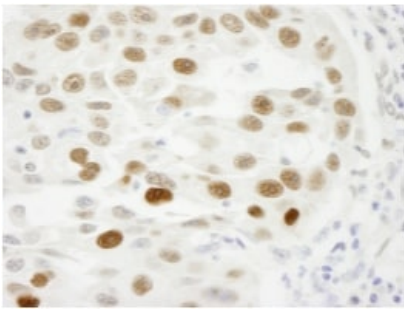
图片



Immunohistochemistry (Formalin/PFA-fixed paraffin-embedded sections) - Anti-KPNA2 antibody (ab84440)

Immunohistochemical analysis of KPNA2 in formalin fixed, paraffin embedded human metastatic lymph node tissue, using a 1/250 dilution of ab84440.

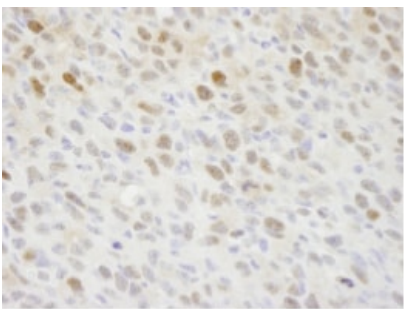
Detection: DAB staining.



Immunohistochemistry (Formalin/PFA-fixed paraffin-embedded sections) - Anti-KPNA2 antibody (ab84440)

Immunohistochemical analysis of KPNA2 in formalin fixed, paraffin embedded human bladder carcinoma tissue, using a 1/250 dilution of ab84440.

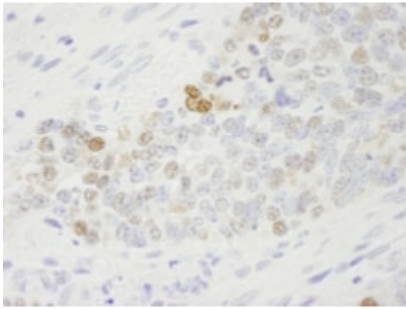
Detection: DAB staining.



Immunohistochemistry (Formalin/PFA-fixed paraffin-embedded sections) - Anti-KPNA2 antibody (ab84440)

Immunohistochemical analysis of KPNA2 in formalin fixed, paraffin embedded mouse squamous cell carcinoma tissue, using a 1/250 dilution of ab84440.

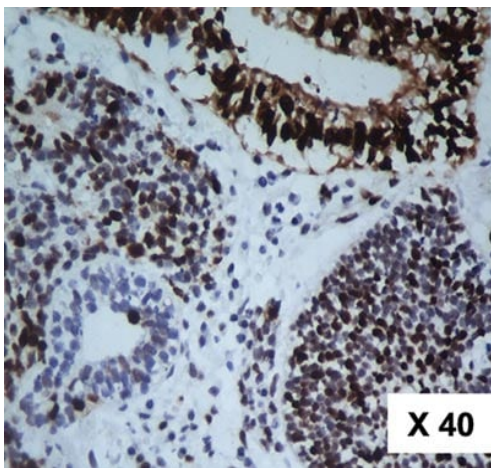
Detection: DAB staining.



Immunohistochemistry (Formalin/PFA-fixed paraffin-embedded sections) - Anti-KPNA2 antibody (ab84440)

Immunohistochemical analysis of KPNA2 in formalin fixed, paraffin embedded mouse teratoma tissue, using a 1/250 dilution of ab84440.

Detection: DAB staining.



Immunohistochemistry (Formalin/PFA-fixed paraffin-embedded sections) - Anti-KPNA2 antibody (ab84440)

Image from He L et al., PLoS One. 2012;7(9):e42992. doi: 10.1371/journal.pone.0042992. Epub 2012 Sep 4. Fig 4.; doi:10.1371/journal.pone.0042992; September 4, 2012, PLoS ONE 7(9): e42992.

Immunohistochemical analysis of Human ovarian germ cell tumour, staining KPNA2 with ab84440.

Antigen retrieval was performed by submerging the sample in citrate buffer (pH 6) and microwaving. The sections were blocked with 1% BSA before incubating with primary antibody (1/400).

Staining was detected using DAB.

Please note: All products are "FOR RESEARCH USE ONLY. NOT FOR USE IN DIAGNOSTIC PROCEDURES"

Our Abpromise to you: Quality guaranteed and expert technical support

- Replacement or refund for products not performing as stated on the datasheet
- Valid for 12 months from date of delivery
- Response to your inquiry within 24 hours

- We provide support in Chinese, English, French, German, Japanese and Spanish
- Extensive multi-media technical resources to help you

- We investigate all quality concerns to ensure our products perform to the highest standards

If the product does not perform as described on this datasheet, we will offer a refund or replacement. For full details of the Abpromise, please visit <https://www.abcam.cn/abpromise> or contact our technical team.

Terms and conditions

- Guarantee only valid for products bought direct from Abcam or one of our authorized distributors