

Anti-KLHL17 antibody ab122164

3 图像

概述

产品名称	Anti-KLHL17抗体
描述	兔多克隆抗体to KLHL17
宿主	Rabbit
经测试应用	适用于: ICC/IF, IHC-P, WB
种属反应性	与反应: Human
免疫原	antigen sequence: AGAWESVAPM NIRRSTHDLV AMDGWLYAVG GNDGSSSLNS IEKYNPRTNK WVAASCMFTR RSSVGVAVLE LLNFPPSSP TLSVS, corresponding to amino acids 554-638 of Human KLHL17. Run BLAST with Expasy Run BLAST with NCBI
阳性对照	Human testis tissue; RT 4, U 51 MG and Human plasma lysates.
常规说明	<p>The Life Science industry has been in the grips of a reproducibility crisis for a number of years. Abcam is leading the way in addressing this with our range of recombinant monoclonal antibodies and knockout edited cell lines for gold-standard validation. Please check that this product meets your needs before purchasing.</p> <p>If you have any questions, special requirements or concerns, please send us an inquiry and/or contact our Support team ahead of purchase. Recommended alternatives for this product can be found below, along with publications, customer reviews and Q&As</p>

性能

形式	Liquid
存放说明	Shipped at 4°C. Upon delivery aliquot and store at -20°C. Avoid freeze / thaw cycles.
存储溶液	pH: 7.20 Preservative: 0.02% Sodium azide Constituents: 40% Glycerol (glycerin, glycerine), 59% PBS
纯度	Immunogen affinity purified
克隆	多克隆
同种型	IgG

应用

The Abpromise guarantee

Abpromise™ 承诺保证使用 ab122164 于以下的经测试应用

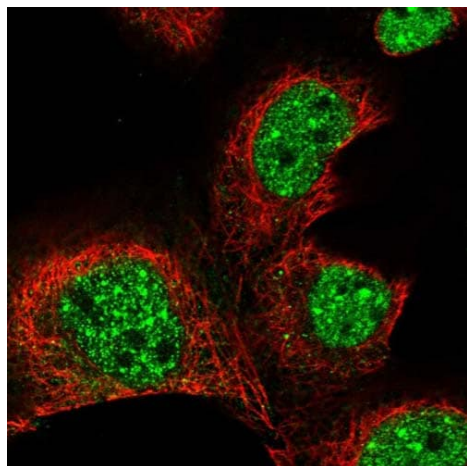
“应用说明”部分 下显示的仅为推荐的起始稀释度;实际最佳的稀释度/浓度应由使用者检定。

应用	Ab评论	说明
ICC/IF		Use a concentration of 0.25 - 2 µg/ml.
IHC-P		1/50 - 1/200. Perform heat mediated antigen retrieval with citrate buffer pH 6 before commencing with IHC staining protocol.
WB		Use a concentration of 0.04 - 0.4 µg/ml.

靶标

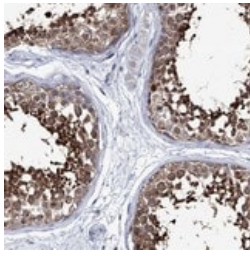
功能	Substrate-recognition component of some cullin-RING-based BCR (BTB-CUL3-RBX1) E3 ubiquitin-protein ligase complex. The BCR(KLHL17) mediates the ubiquitination and subsequent degradation of GLUR6. May play a role in the actin-based neuronal function.
通路	Protein modification; protein ubiquitination.
序列相似性	Contains 1 BACK (BTB/Kelch associated) domain. Contains 1 BTB (POZ) domain. Contains 6 Kelch repeats.
细胞定位	Cell junction > synapse > postsynaptic cell membrane > postsynaptic density. Cell junction > synapse. Postsynaptic density.

图片



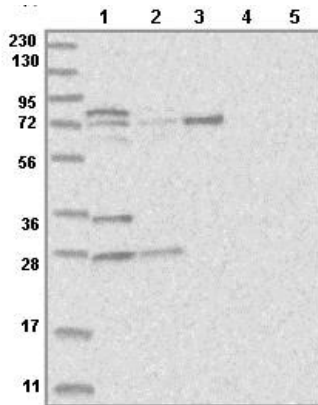
Immunofluorescent staining of Human cell line A-431 shows positivity in nucleus but not nucleoli. Recommended concentration of ab122164 1-4 µg/ml. Cells treated with PFA/Triton X-100.

Immunocytochemistry/ Immunofluorescence - Anti-KLHL17 antibody (ab122164)



ab122164 at 1/100 dilution staining KLHL17 in Paraffin-embedded Human testis tissue by Immunohistochemistry.

Immunohistochemistry (Formalin/PFA-fixed paraffin-embedded sections) - Anti-KLHL17 antibody (ab122164)



All lanes : Anti-KLHL17 antibody (ab122164) at 1/250 dilution

Lane 1 : RT 4 lysate

Lane 2 : U 251 MG lysate

Lane 3 : Human plasma lysate

Lane 4 : Human liver lysate

Lane 5 : Human tonsil lysate

Developed using the ECL technique.

Western blot - Anti-KLHL17 antibody (ab122164)

Please note: All products are "FOR RESEARCH USE ONLY. NOT FOR USE IN DIAGNOSTIC PROCEDURES"

Our Abpromise to you: Quality guaranteed and expert technical support

- Replacement or refund for products not performing as stated on the datasheet
- Valid for 12 months from date of delivery
- Response to your inquiry within 24 hours
- We provide support in Chinese, English, French, German, Japanese and Spanish
- Extensive multi-media technical resources to help you
- We investigate all quality concerns to ensure our products perform to the highest standards

If the product does not perform as described on this datasheet, we will offer a refund or replacement. For full details of the Abpromise, please visit <https://www.abcam.cn/abpromise> or contact our technical team.

Terms and conditions

- Guarantee only valid for products bought direct from Abcam or one of our authorized distributors