


### Anti-KLF5 antibody ab24331

★★★★★ **6 Abreviews**   **35 References**   **3 图像**

#### 概述

产品名称	Anti-KLF5抗体
描述	兔多克隆抗体to KLF5
宿主	Rabbit
特异性	Some of our customers have successfully used ab24331 on mouse, please see PubMed ID: 19720868 and 21600198. However, we have been unable to show cross-reactivity with this species and therefore we cannot guarantee this product will consistently work on mouse. Please contact our Scientific Support team for further information.
经测试应用	<b>适用于:</b> IHC-P, WB
种属反应性	<b>与反应:</b> Human <b>预测可用于:</b> Rat 
免疫原	Synthetic peptide. This information is proprietary to Abcam and/or its suppliers.
常规说明	<p>The Life Science industry has been in the grips of a reproducibility crisis for a number of years. Abcam is leading the way in addressing this with our range of recombinant monoclonal antibodies and knockout edited cell lines for gold-standard validation. Please check that this product meets your needs before purchasing.</p> <p>If you have any questions, special requirements or concerns, please send us an inquiry and/or contact our Support team ahead of purchase. Recommended alternatives for this product can be found below, along with publications, customer reviews and Q&amp;As</p>

#### 性能

形式	Liquid
存放说明	Shipped at 4°C. Store at +4°C short term (1-2 weeks). Upon delivery aliquot. Store at -20°C or -80°C. Avoid freeze / thaw cycle.
存储溶液	pH: 7.40 Preservative: 0.02% Sodium azide Constituent: PBS
	Batches of this product that have a concentration < 1mg/ml may have BSA added as a stabilising agent. If you would like information about the formulation of a specific lot, please contact our scientific support team who will be happy to help.

纯度	Immunogen affinity purified
克隆	多克隆
同种型	IgG

应用

**The Abpromise guarantee**      **Abpromise™**承诺保证使用ab24331于以下的经测试应用

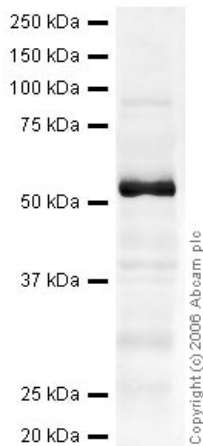
“应用说明”部分 下显示的仅为推荐的起始稀释度;实际最佳的稀释度/浓度应由使用者检定。

应用	Ab评论	说明
IHC-P		Use a concentration of 0.6 - 3 µg/ml.
WB	★★★★★ (1)	Use a concentration of 2 µg/ml. Detects a band of approximately 52 kDa (predicted molecular weight: 50 kDa).

靶标

功能	Transcription factor that binds to GC box promoter elements. Activates the transcription of these genes.
组织特异性	Expressed only in testis and placenta.
序列相似性	Belongs to the krueppel C2H2-type zinc-finger protein family. Contains 3 C2H2-type zinc fingers.
翻译后修饰	Ubiquitinated. Polyubiquitination involves WWP1 and leads to proteasomal degradation of this protein.
细胞定位	Nucleus.
形式	KLF5 (also known as basic transcription element-binding protein 2, BTEB2, and intestine enriched krüppel-like factor, IKLF), appears to play a central role in the regulation of intestinal epithelial renewal in both the small intestine and colon. KLF5 also regulates adipocyte differentiation.

图片



Western blot - Anti-KLF5 antibody (ab24331)

Anti-KLF5 antibody (ab24331) at 2 µg/ml + Small Intestine (Human)  
Tissue Lysate at 20 µg

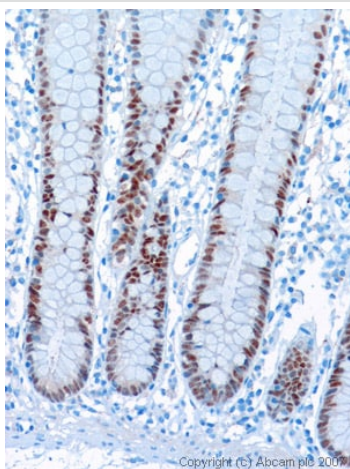
#### Secondary

IRDye 680 Conjugated Goat Anti-Rabbit IgG (H+L) at 1/15000  
dilution

Performed under reducing conditions.

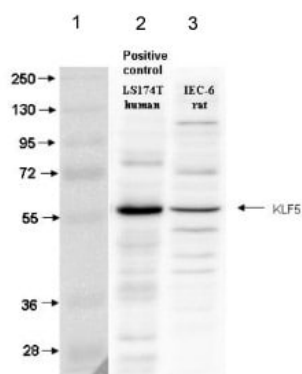
**Predicted band size:** 50 kDa

**Observed band size:** 52 kDa



Immunohistochemistry (Formalin/PFA-fixed paraffin-embedded sections) - Anti-KLF5 antibody (ab24331)

The image shows nuclear staining of the epithelial cells of the intestinal gland. Tris EDTA pH9 and Citrate pH6 are both suitable antigen retrieval techniques.



Western blot - Anti-KLF5 antibody (ab24331)

This image is courtesy of an anonymous Abreview

**All lanes :** Anti-KLF5 antibody (ab24331) at 1/500 dilution

**Lane 1 :** Marker ladder

**Lane 2 :** Cell lysate prepared from human Ls174T cells at 40 µg

**Lane 3 :** Cell lysate prepared from IEC-6 rat intestinal cells at 40 µg

#### Secondary

**Lanes 2-3 :** HRP conjugated goat polyclonal to rabbit IgG at  
1/1500 dilution

**Predicted band size:** 50 kDa

**Exposure time:** 2 minutes

**Please note:** All products are "FOR RESEARCH USE ONLY. NOT FOR USE IN DIAGNOSTIC PROCEDURES"

### **Our Abpromise to you: Quality guaranteed and expert technical support**

---

- Replacement or refund for products not performing as stated on the datasheet
- Valid for 12 months from date of delivery
- Response to your inquiry within 24 hours
  
- We provide support in Chinese, English, French, German, Japanese and Spanish
- Extensive multi-media technical resources to help you
- We investigate all quality concerns to ensure our products perform to the highest standards

If the product does not perform as described on this datasheet, we will offer a refund or replacement. For full details of the Abpromise, please visit <https://www.abcam.cn/abpromise> or contact our technical team.

### **Terms and conditions**

---

- Guarantee only valid for products bought direct from Abcam or one of our authorized distributors