

# Anti-KLC3 antibody ab101188

## 2 图像

### 概述

产品名称	Anti-KLC3抗体
描述	兔多克隆抗体to KLC3
宿主	Rabbit
经测试应用	适用于: WB, ICC/IF
种属反应性	与反应: Human 预测可用于: Macaque monkey, Orangutan 
免疫原	Synthetic peptide. This information is proprietary to Abcam and/or its suppliers.
阳性对照	This antibody gave a positive signal in the following tissue lysates: Human spleen; Human small intestine; Human ovary; Human testis.
常规说明	<p>The Life Science industry has been in the grips of a reproducibility crisis for a number of years. Abcam is leading the way in addressing this with our range of recombinant monoclonal antibodies and knockout edited cell lines for gold-standard validation. Please check that this product meets your needs before purchasing.</p> <p>If you have any questions, special requirements or concerns, please send us an inquiry and/or contact our Support team ahead of purchase. Recommended alternatives for this product can be found below, along with publications, customer reviews and Q&amp;As</p>

### 性能

形式	Liquid
存放说明	Shipped at 4°C. Store at +4°C short term (1-2 weeks). Upon delivery aliquot. Store at -20°C or -80°C. Avoid freeze / thaw cycle.
存储溶液	pH: 7.40 Preservative: 0.02% Sodium azide Constituent: PBS  Batches of this product that have a concentration < 1mg/ml may have BSA added as a stabilising agent. If you would like information about the formulation of a specific lot, please contact our scientific support team who will be happy to help.
纯度	Immunogen affinity purified
克隆	多克隆

同种型

IgG

## 应用

### The Abpromise guarantee

**Abpromise™** 承诺保证使用 ab101188 于以下的经测试应用

“应用说明”部分 下显示的仅为推荐的起始稀释度;实际最佳的稀释度/浓度应由使用者检定。

应用	Ab评论	说明
WB		Use a concentration of 1 µg/ml. Detects a band of approximately 55 kDa (predicted molecular weight: 55 kDa).
ICC/IF		Use a concentration of 5 µg/ml.

## 靶标

### 功能

Kinesin is a microtubule-associated force-producing protein that may play a role in organelle transport.

### 序列相似性

Belongs to the kinesin light chain family.  
Contains 5 TPR repeats.

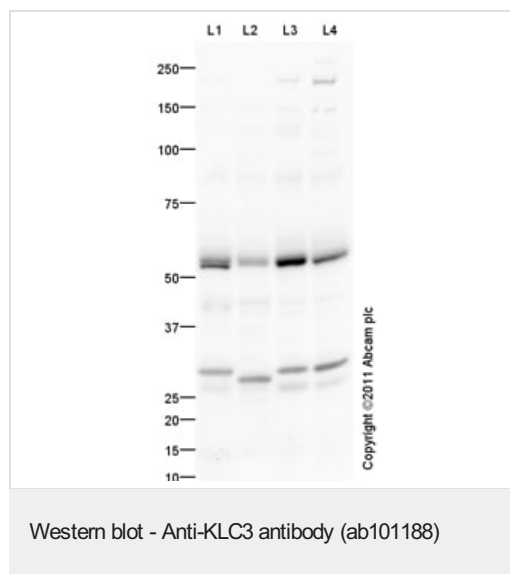
### 结构域

The heptad repeat (HR) motif is sufficient for interaction with kinesin heavy (KHL) chains and ODF1. The TPR region is involved in mitochondrial binding.

### 细胞定位

Cytoplasm > cytoskeleton. Elongating spermatid tail midpiece, localized in outer dense fibers (ODFs) and associates with mitochondria.

## 图片



**All lanes :** Anti-KLC3 antibody (ab101188) at 1 µg/ml

**Lane 1 :** Human spleen tissue lysate - total protein ([ab29699](#))

**Lane 2 :** Human small intestine tissue lysate - total protein ([ab29276](#))

**Lane 3 :** Human ovary tissue lysate - total protein ([ab30222](#))

**Lane 4 :** Human testis tissue lysate - total protein ([ab30257](#))

Lysates/proteins at 10 µg per lane.

### Secondary

**All lanes :** Goat Anti-Rabbit IgG H&L (HRP) preadsorbed ([ab97080](#)) at 1/5000 dilution

Developed using the ECL technique.

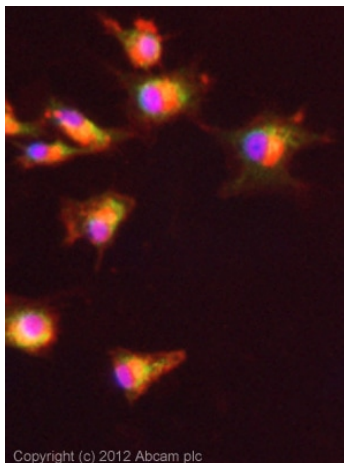
Performed under reducing conditions.

**Predicted band size:** 55 kDa

**Observed band size:** 55 kDa

**Additional bands at:** 29 kDa. We are unsure as to the identity of these extra bands.

**Exposure time:** 14 minutes



ICC/IF image of ab101188 stained U87MG cells. The cells were 4% formaldehyde fixed (10 min) and then incubated in 1%BSA / 10% normal goat serum / 0.3M glycine in 0.1% PBS-Tween for 1h to permeabilise the cells and block non-specific protein-protein interactions. The cells were then incubated with the antibody (ab101188, 5µg/ml) overnight at +4°C. The secondary antibody (green) was **ab96899**, DyLight® 488 goat anti-rabbit IgG (H+L) used at a 1/250 dilution for 1h. Alexa Fluor® 594 WGA was used to label plasma membranes (red) at a 1/200 dilution for 1h. DAPI was used to stain the cell nuclei (blue) at a concentration of 1.43µM.

Immunocytochemistry/ Immunofluorescence - Anti-KLC3 antibody (ab101188)

**Please note:** All products are "FOR RESEARCH USE ONLY. NOT FOR USE IN DIAGNOSTIC PROCEDURES"

### Our Abpromise to you: Quality guaranteed and expert technical support

- Replacement or refund for products not performing as stated on the datasheet
- Valid for 12 months from date of delivery
- Response to your inquiry within 24 hours
- We provide support in Chinese, English, French, German, Japanese and Spanish
- Extensive multi-media technical resources to help you
- We investigate all quality concerns to ensure our products perform to the highest standards

If the product does not perform as described on this datasheet, we will offer a refund or replacement. For full details of the Abpromise, please visit <https://www.abcam.cn/abpromise> or contact our technical team.

### Terms and conditions

- Guarantee only valid for products bought direct from Abcam or one of our authorized distributors