

Anti-KLC2 antibody ab95881

[2 References](#) [2 图像](#)

概述

产品名称	Anti-KLC2抗体
描述	兔多克隆抗体to KLC2
宿主	Rabbit
经测试应用	适用于: WB, IP
种属反应性	与反应: Human 预测可用于: Chimpanzee, Orangutan 
免疫原	Synthetic peptide, corresponding to a region between amino acids 150-200 of Human KLC2 (NP_001128247.1).
阳性对照	HeLa cell lysate
常规说明	<p>The Life Science industry has been in the grips of a reproducibility crisis for a number of years. Abcam is leading the way in addressing this with our range of recombinant monoclonal antibodies and knockout edited cell lines for gold-standard validation. Please check that this product meets your needs before purchasing.</p> <p>If you have any questions, special requirements or concerns, please send us an inquiry and/or contact our Support team ahead of purchase. Recommended alternatives for this product can be found below, along with publications, customer reviews and Q&As</p>

性能

形式	Liquid
存放说明	Shipped at 4°C. Upon delivery aliquot and store at -20°C. Avoid freeze / thaw cycles.
存储溶液	pH: 6.8 Preservative: 0.09% Sodium azide Constituents: 0.1% BSA, Tris buffered saline
纯度	Immunogen affinity purified
纯化说明	Affinity purified using an epitope specific to KLC2 immobilized on solid support.
克隆	多克隆
同种型	IgG

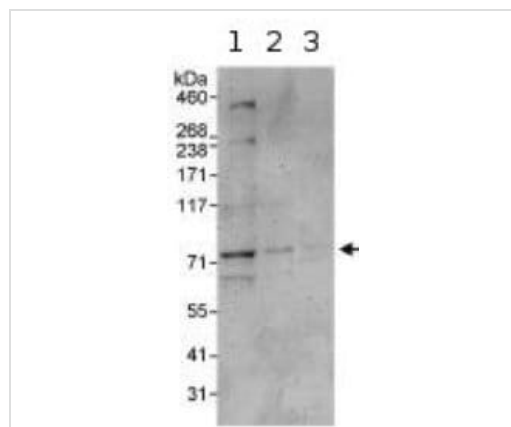
The Abpromise guarantee **Abpromise™** 承诺保证使用 ab95881 于以下的经测试应用

“应用说明”部分 下显示的仅为推荐的起始稀释度;实际最佳的稀释度/浓度应由使用者检定。

应用	Ab评论	说明
WB		1/2000 - 1/10000. Predicted molecular weight: 69 kDa.
IP		Use at 2-5 µg/mg of lysate.

靶标

功能	Kinesin is a microtubule-associated force-producing protein that may play a role in organelle transport. The light chain may function in coupling of cargo to the heavy chain or in the modulation of its ATPase activity.
序列相似性	Belongs to the kinesin light chain family. Contains 6 TPR repeats.
细胞定位	Cytoplasm > cytoskeleton.

图片

Western blot - Anti-KLC2 antibody (ab95881)

All lanes : Anti-KLC2 antibody (ab95881) at 0.04 µg/ml

Lane 1 : HeLa whole cell lysate at 50 µg

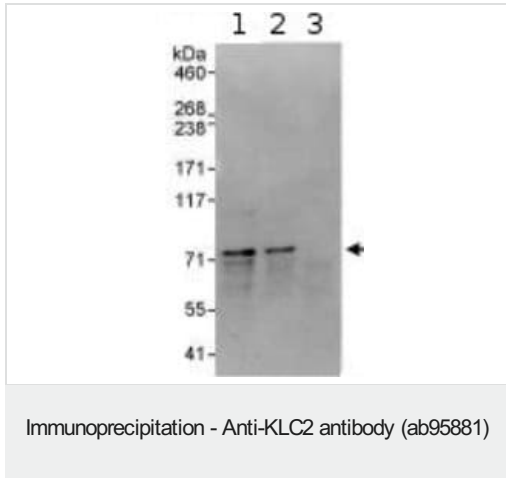
Lane 2 : HeLa whole cell lysate at 15 µg

Lane 3 : HeLa whole cell lysate at 5 µg

Developed using the ECL technique.

Predicted band size: 69 kDa

Exposure time: 3 minutes



ab95881 at 0.4 $\mu\text{g/ml}$ detecting KLC2 in HeLa whole cell lysate by WB following IP.

Lane 1: KLC2 with 3 $\mu\text{g/mg}$ of lysate

Lane 2: IP with an antibody which recognizes a downstream epitope of KLC2

Lane 3: control IgG

In each case, 1 mg of lysate was used for IP and 20% of the IP was loaded.

Detection: Chemiluminescence with an exposure time of 30 seconds.

Please note: All products are "FOR RESEARCH USE ONLY. NOT FOR USE IN DIAGNOSTIC PROCEDURES"

Our Abpromise to you: Quality guaranteed and expert technical support

- Replacement or refund for products not performing as stated on the datasheet
- Valid for 12 months from date of delivery
- Response to your inquiry within 24 hours
- We provide support in Chinese, English, French, German, Japanese and Spanish
- Extensive multi-media technical resources to help you
- We investigate all quality concerns to ensure our products perform to the highest standards

If the product does not perform as described on this datasheet, we will offer a refund or replacement. For full details of the Abpromise, please visit <https://www.abcam.cn/abpromise> or contact our technical team.

Terms and conditions

- Guarantee only valid for products bought direct from Abcam or one of our authorized distributors