

# Anti-Kir6.2/BIR antibody ab79171

★★★★☆ [1 Abreviews](#) [7 References](#) [3 图像](#)

### 概述

<b>产品名称</b>	Anti-Kir6.2/BIR抗体
<b>描述</b>	兔多克隆抗体to Kir6.2/BIR
<b>宿主</b>	Rabbit
<b>经测试应用</b>	<b>适用于:</b> WB, IHC-P, ICC/IF
<b>种属反应性</b>	<b>与反应:</b> Mouse, Human
<b>免疫原</b>	Synthetic peptide. This information is proprietary to Abcam and/or its suppliers.
<b>常规说明</b>	<p>The Life Science industry has been in the grips of a reproducibility crisis for a number of years. Abcam is leading the way in addressing this with our range of recombinant monoclonal antibodies and knockout edited cell lines for gold-standard validation. Please check that this product meets your needs before purchasing.</p> <p>If you have any questions, special requirements or concerns, please send us an inquiry and/or contact our Support team ahead of purchase. Recommended alternatives for this product can be found below, along with publications, customer reviews and Q&amp;As</p>

### 性能

<b>形式</b>	Liquid
<b>存放说明</b>	Shipped at 4°C. Upon delivery aliquot and store at -20°C. Avoid freeze / thaw cycles.
<b>存储溶液</b>	pH: 7.40 Preservative: 0.02% Sodium azide Constituents: 0.87% Sodium chloride, PBS, 50% Glycerol (glycerin, glycerine)
<b>纯度</b>	Without Mg <sup>2+</sup> and Ca <sup>2+</sup> Immunogen affinity purified
<b>纯化说明</b>	The antibody was affinity purified from rabbit antiserum by affinity chromatography using epitope specific immunogen.
<b>克隆</b>	多克隆
<b>同种型</b>	IgG

### 应用

## The Abpromise guarantee

**Abpromise™** 承诺保证使用 ab79171 于以下的经测试应用

“应用说明”部分下显示的仅为推荐的起始稀释度；实际最佳的稀释度/浓度应由使用者检定。

应用	Ab评论	说明
WB	★★★★☆ (1)	1/500 - 1/1000. Predicted molecular weight: 44 kDa.
IHC-P		1/50 - 1/100.
ICC/IF		1/500 - 1/1000.

## 靶标

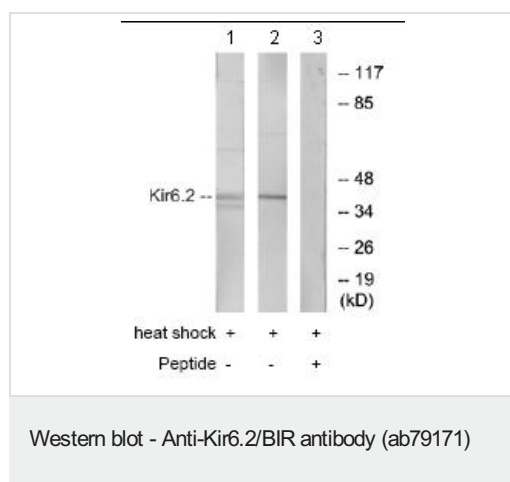
### 相关性

ATP-sensitive potassium (K(ATP)) channels are found in endocrine cells, neurons and both smooth and striated muscle, where they play an important role in controlling insulin secretion and vascular tone, and protect neurons under metabolic stress. Kir6.2 is a member of the inward rectifier potassium channel family, which is characterised by a greater tendency to allow potassium flow into the cell rather than out of it. It associates with the sulphonylurea receptor SUR1/ABCC8 to form a subfamily of K(ATP) channels that, when mutated or misregulated, are associated with forms of hyperinsulinemic hypoglycemia, neonatal diabetes, or pre-disposition to type 2 diabetes mellitus.

### 细胞定位

Cell Membrane; Multi-pass membrane protein

## 图片



**All lanes :** Anti-Kir6.2/BIR antibody (ab79171) at 1/500 dilution

**Lane 1 :** extracts from HeLa cells treated with heat shock

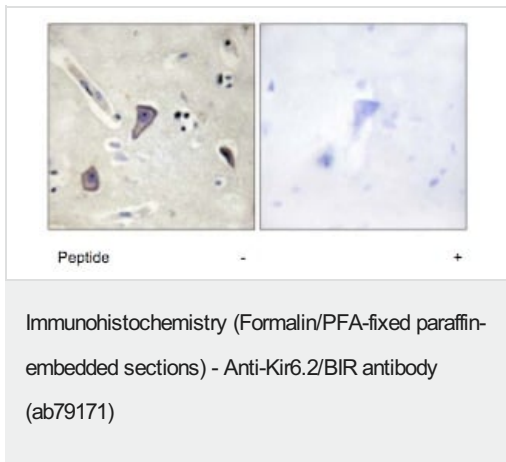
**Lane 2 :** extracts from NIH3T3 cells treated with heat shock

**Lane 3 :** extracts from NIH3T3 cells treated with heat shock with immunizing peptide at 10 µg

Lysates/proteins at 20 µg per lane.

**Predicted band size:** 44 kDa

**Observed band size:** 44 kDa



Immunohistochemical analysis of Kir6.2/BIR in paraffin embedded human brain tissue using a 1/50 dilution of ab79171, with (right) or without (left) pre treatment with the immunizing peptide.



Immunofluorescence analysis of Kir6.2/BIR in HeLa cells, using a 1/500 dilution of ab79171, with (right) or without (left) pre treatment with the immunizing peptide.

**Please note:** All products are "FOR RESEARCH USE ONLY. NOT FOR USE IN DIAGNOSTIC PROCEDURES"

### Our Abpromise to you: Quality guaranteed and expert technical support

---

- Replacement or refund for products not performing as stated on the datasheet
- Valid for 12 months from date of delivery
- Response to your inquiry within 24 hours
- We provide support in Chinese, English, French, German, Japanese and Spanish
- Extensive multi-media technical resources to help you
- We investigate all quality concerns to ensure our products perform to the highest standards

If the product does not perform as described on this datasheet, we will offer a refund or replacement. For full details of the Abpromise, please visit <https://www.abcam.cn/abpromise> or contact our technical team.

### Terms and conditions

---

- Guarantee only valid for products bought direct from Abcam or one of our authorized distributors