


# Anti-Kir2.1/KCNJ2 antibody [EPR4530] ab109750

**重组 RabMAb**

★☆☆☆☆ **1 Abreviews** **8 References** **4 图像**

### 概述

产品名称	Anti-Kir2.1/KCNJ2抗体[EPR4530]
描述	兔单克隆抗体[EPR4530] to Kir2.1/KCNJ2
宿主	Rabbit
经测试应用	<b>适用于:</b> ICC/IF, WB, IHC-P <b>不适用于:</b> Flow Cyt or IP
种属反应性	<b>与反应:</b> Human <b>预测可用于:</b> Mouse, Rat 
免疫原	Synthetic peptide. This information is proprietary to Abcam and/or its suppliers.
阳性对照	293T and A549 cell lysates; Human brain tissue; SH SY5Y cells.
常规说明	This product is a recombinant monoclonal antibody, which offers several advantages including: <ul style="list-style-type: none"> <li>- High batch-to-batch consistency and reproducibility</li> <li>- Improved sensitivity and specificity</li> <li>- Long-term security of supply</li> <li>- Animal-free production</li> </ul> For more information <a href="#">see here</a> . Our RabMAb <sup>®</sup> technology is a patented hybridoma-based technology for making rabbit monoclonal antibodies. For details on our patents, please refer to <a href="#">RabMAb<sup>®</sup> patents</a> .

### 性能

形式	Liquid
存放说明	Shipped at 4°C. Store at -20°C. Stable for 12 months at -20°C.
存储溶液	pH: 7.20 Preservative: 0.01% Sodium azide Constituents: 9% PBS, 40% Glycerol (glycerin, glycerine), 0.05% BSA, 50% Tissue culture supernatant
纯度	Protein A purified
克隆	单克隆
克隆编号	EPR4530

## 应用

## The Abpromise guarantee

Abpromise™承诺保证使用ab109750于以下的经测试应用

“应用说明”部分下显示的仅为推荐的起始稀释度;实际最佳的稀释度/浓度应由使用者检定。

应用	Ab评论	说明
ICC/IF	★☆☆☆☆ (1)	1/100 - 1/250.
WB		1/1000 - 1/10000. Predicted molecular weight: 48 kDa.
IHC-P		1/250 - 1/500. Perform heat mediated antigen retrieval via the pressure cooker method before commencing with IHC staining protocol.

## 应用说明

Is unsuitable for Flow Cyt or IP.

## 靶标

## 功能

Probably participates in establishing action potential waveform and excitability of neuronal and muscle tissues. Inward rectifier potassium channels are characterized by a greater tendency to allow potassium to flow into the cell rather than out of it. Their voltage dependence is regulated by the concentration of extracellular potassium; as external potassium is raised, the voltage range of the channel opening shifts to more positive voltages. The inward rectification is mainly due to the blockage of outward current by internal magnesium. Can be blocked by extracellular barium or cesium.

## 组织特异性

Heart, brain, placenta, lung, skeletal muscle, and kidney. Diffusely distributed throughout the brain.

## 疾病相关

Defects in KCNJ2 are the cause of long QT syndrome type 7 (LQT7) [MIM:170390]; also called Andersen syndrome or Andersen cardiodyrhythmic periodic paralysis. Long QT syndromes are heart disorders characterized by a prolonged QT interval on the ECG and polymorphic ventricular arrhythmias. They cause syncope and sudden death in response to exercise or emotional stress. LQT7 manifests itself as a clinical triad consisting of potassium-sensitive periodic paralysis, ventricular ectopy and dysmorphic features.

Defects in KCNJ2 are the cause of short QT syndrome type 3 (SQT3) [MIM:609622]. Short QT syndromes are heart disorders characterized by idiopathic persistently and uniformly short QT interval on ECG in the absence of structural heart disease in affected individuals. They cause syncope and sudden death. SQT3 has a unique ECG phenotype characterized by asymmetrical T waves.

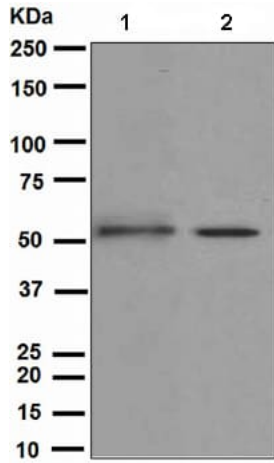
## 序列相似性

Belongs to the inward rectifier-type potassium channel (TC 1.A.2.1) family. KCNJ2 subfamily.

## 细胞定位

Membrane.

## 图片



Western blot - Anti-Kir2.1/KCNJ2 antibody [EPR4530] (ab109750)

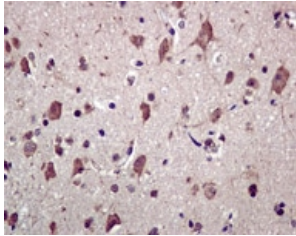
**All lanes :** Anti-Kir2.1/KCNJ2 antibody [EPR4530] (ab109750) at 1/1000 dilution

**Lane 1 :** 293T cell lysate

**Lane 2 :** A549 cell lysate

Lysates/proteins at 10 µg per lane.

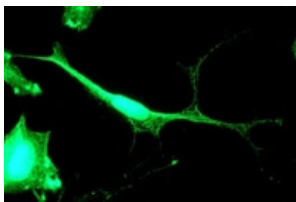
**Predicted band size:** 48 kDa



Immunohistochemistry (Formalin/PFA-fixed paraffin-embedded sections) - Anti-Kir2.1/KCNJ2 antibody [EPR4530] (ab109750)

ab109750 at 1/250 dilution staining Kir2.1/KCNJ2 in Human brain by Immunohistochemistry, Paraffin-embedded tissue.

Perform heat mediated antigen retrieval via the pressure cooker method before commencing with IHC staining protocol.



Immunocytochemistry/ Immunofluorescence - Anti-Kir2.1/KCNJ2 antibody [EPR4530] (ab109750)

ab109750 at 1/100 dilution staining Kir2.1/KCNJ2 in SH SY5Y cells by Immunofluorescence.

Why choose a recombinant antibody?

**Research with confidence**  
Consistent and reproducible results

**Long-term and scalable supply**  
Recombinant technology

**Success from the first experiment**  
Confirmed specificity

**Ethical standards compliant**  
Animal-free production

Anti-Kir2.1/KCNU2 antibody [EPR4530] (ab109750)

**Please note:** All products are "FOR RESEARCH USE ONLY. NOT FOR USE IN DIAGNOSTIC PROCEDURES"

### Our Abpromise to you: Quality guaranteed and expert technical support

---

- Replacement or refund for products not performing as stated on the datasheet
- Valid for 12 months from date of delivery
- Response to your inquiry within 24 hours
- We provide support in Chinese, English, French, German, Japanese and Spanish
- Extensive multi-media technical resources to help you
- We investigate all quality concerns to ensure our products perform to the highest standards

If the product does not perform as described on this datasheet, we will offer a refund or replacement. For full details of the Abpromise, please visit <https://www.abcam.cn/abpromise> or contact our technical team.

### Terms and conditions

---

- Guarantee only valid for products bought direct from Abcam or one of our authorized distributors