


### Anti-Kindlin 2 antibody ab74030

★★★★★ [6 Abreviews](#) [13 References](#) [4 图像](#)

#### 概述

|       |   |
|-------|---|
| 产品名称  | Anti-Kindlin 2抗体  |
| 描述    | 兔多克隆抗体to Kindlin 2  |
| 宿主    | Rabbit  |
| 经测试应用 | 适用于: IP, WB, ICC/IF   |
| 种属反应性 | 与反应: Human<br>预测可用于: Mouse, Rat, Cow   |
| 免疫原   | Synthetic peptide corresponding to Human Kindlin 2 aa 450-550 (internal sequence) conjugated to keyhole limpet haemocyanin.<br>(Peptide available as <a href="#">ab74029</a> )  |
| 常规说明  | <p>The Life Science industry has been in the grips of a reproducibility crisis for a number of years. Abcam is leading the way in addressing this with our range of recombinant monoclonal antibodies and knockout edited cell lines for gold-standard validation. Please check that this product meets your needs before purchasing.</p> <p>If you have any questions, special requirements or concerns, please send us an inquiry and/or contact our Support team ahead of purchase. Recommended alternatives for this product can be found below, along with publications, customer reviews and Q&amp;As</p> |

#### 性能

|      |  |
|------|--|
| 形式   | Liquid   |
| 存放说明 | Shipped at 4°C. Store at +4°C short term (1-2 weeks). Upon delivery aliquot. Store at -20°C or -80°C. Avoid freeze / thaw cycle.   |
| 存储溶液 | <p>pH: 7.40</p> <p>Preservative: 0.02% Sodium azide</p> <p>Constituent: PBS</p> <p>Batches of this product that have a concentration &lt; 1mg/ml may have BSA added as a stabilising agent. If you would like information about the formulation of a specific lot, please contact our scientific support team who will be happy to help.</p> |
| 纯度   | Immunogen affinity purified  |
| 克隆   | 多克隆  |

同种型

IgG

应用

The Abpromise guarantee

Abpromise™承诺保证使用ab74030于以下的经测试应用

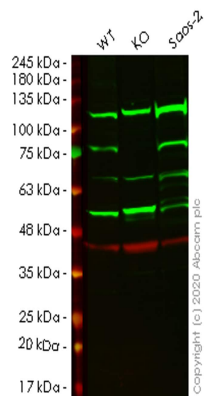
“应用说明”部分 下显示的仅为推荐的起始稀释度;实际最佳的稀释度/浓度应由使用者检定。

| 应用     | Ab评论      | 说明   |
|--------|-----------|--|
| IP     |           | Use a concentration of 5 µg/ml.  |
| WB     | ★★★★☆ (3) | Use a concentration of 1 µg/ml. Detects a band of approximately 78 kDa (predicted molecular weight: 78 kDa). |
| ICC/IF | ★★★★☆ (2) | Use at an assay dependent concentration.   |

靶标

|       |   |
|-------|---|
| 功能    | Participates in the connection between ECM adhesion sites and the actin cytoskeleton and also in the orchestration of actin assembly and cell shape modulation. Recruits migfilin (FBLP1) protein to cell-ECM focal adhesion sites. |
| 组织特异性 | Ubiquitous. Found in numerous tumor tissues.  |
| 序列相似性 | Belongs to the kindlin family.<br>Contains 1 FERM domain.<br>Contains 1 PH domain.  |
| 结构域   | The FERM domain is not correctly detected by PROSITE or Pfam techniques because it contains the insertion of a PH domain.   |
| 细胞定位  | Cytoplasm > cell cortex. Cytoplasm > cytoskeleton. Cell junction > focal adhesion. Within actin stress fibers at cell-ECM focal adhesion sites.   |

图片



Western blot - Anti-Kindlin 2 antibody (ab74030)

**All lanes :** Anti-Kindlin 2 antibody (ab74030) at 1/500 dilution

**Lane 1 :** Wild-type HeLa cell lysate

**Lane 2 :** FERMT2 knockout HeLa cell lysate

**Lane 3 :** Saos-2 cell lysate

Lysates/proteins at 20 µg per lane.

### Secondary

**All lanes :** Goat anti-Rabbit IgG H&L (IRDye® 800CW)  
preadsorbed ([ab216773](#)) at 1/10000 dilution

**Predicted band size:** 78 kDa

**Observed band size:** 78 kDa

**Lanes 1-3:** Merged signal (red and green). Green - ab74030 observed at 78 kDa. Red - loading control [ab8245](#) observed at 36 kDa.

ab74030 Anti-Kindlin 2 antibody was shown to specifically react with Kindlin 2 in wild-type HeLa cells. Loss of signal was observed when knockout cell line [ab265247](#) (knockout cell lysate [ab257436](#)) was used. Wild-type and Kindlin 2 knockout samples were subjected to SDS-PAGE. ab74030 and Anti-GAPDH antibody [6C5] - Loading Control ([ab8245](#)) were incubated overnight at 4°C at 1 in 500 dilution and 1 in 20000 dilution respectively. Blots were developed with Goat anti-Rabbit IgG H&L (IRDye® 800CW) preadsorbed ([ab216773](#)) and Goat anti-Mouse IgG H&L (IRDye® 680RD) preadsorbed ([ab216776](#)) secondary antibodies at 1 in 20000 dilution for 1 hour at room temperature before imaging.



Western blot - Anti-Kindlin 2 antibody (ab74030)

**All lanes :** Anti-Kindlin 2 antibody (ab74030) at 1 µg/ml

**Lane 1 :** HT 1080 (Human fibrosarcoma) Whole Cell Lysate

**Lane 2 :** SAOS-2 (sarcoma osteogenic) Whole Cell lysate

**Lane 3 :** Human testis tissue lysate - total protein ([ab30257](#))

**Lane 4 :** HeLa (Human epithelial carcinoma cell line) Nuclear Lysate

Lysates/proteins at 10 µg per lane.

## Secondary

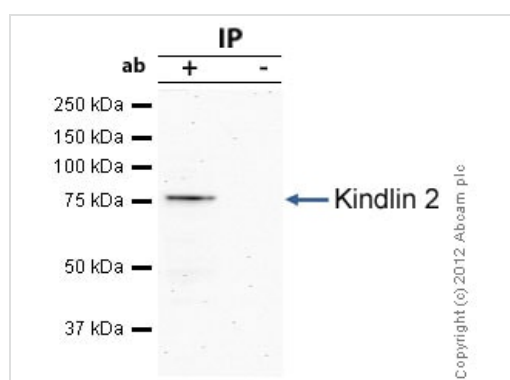
**All lanes :** Goat polyclonal to Rabbit IgG - H&L - Pre-Adsorbed (HRP) at 1/3000 dilution

Performed under reducing conditions.

**Predicted band size:** 78 kDa

**Observed band size:** 78 kDa

**Exposure time:** 8 minutes



Immunoprecipitation - Anti-Kindlin 2 antibody (ab74030)

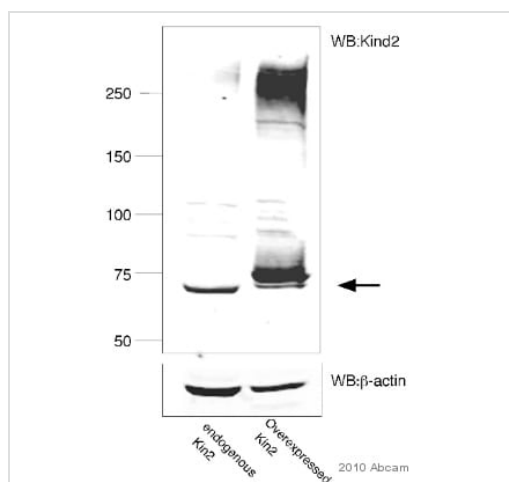
Kindlin 2 was immunoprecipitated using 0.5mg HeLa whole cell extract, 5µg of Rabbit polyclonal to Kindlin 2 and 50µl of protein G magnetic beads (+). No antibody was added to the control (-).

The antibody was incubated under agitation with Protein G beads for 10min, HeLa whole cell extract lysate diluted in RIPA buffer was added to each sample and incubated for a further 10min under agitation.

Proteins were eluted by addition of 40µl SDS loading buffer and incubated for 10min at 70°C; 10µl of each sample was separated on a SDS PAGE gel, transferred to a nitrocellulose membrane, blocked with 5% BSA and probed with ab74030.

Secondary: Mouse monoclonal [SB62a] Secondary Antibody to Rabbit IgG light chain (HRP) ([ab99697](#)).

Band: 78kDa; Kindlin 2



Western blot - Anti-Kindlin 2 antibody (ab74030)

This image is courtesy of an abreview submitted by Ana Kasirer-Friede, UCSD, United States

The kindlin 2 antibody (ab74030) was tested in lysate obtained from CHO cells either expressing endogenous levels of kindlin 2 (lane 1) and transfected CHO cells in which flag-tagged kindlin2 was overexpressed (lane 2). A specific band was at the expected molecular weight of approximately 72 kDa (+/- Flag-tag).  $\beta$ -actin was used to show loading in the two lanes.

**Please note:** All products are "FOR RESEARCH USE ONLY. NOT FOR USE IN DIAGNOSTIC PROCEDURES"

### Our Abpromise to you: Quality guaranteed and expert technical support

- Replacement or refund for products not performing as stated on the datasheet
- Valid for 12 months from date of delivery
- Response to your inquiry within 24 hours
- We provide support in Chinese, English, French, German, Japanese and Spanish
- Extensive multi-media technical resources to help you
- We investigate all quality concerns to ensure our products perform to the highest standards

If the product does not perform as described on this datasheet, we will offer a refund or replacement. For full details of the Abpromise, please visit <https://www.abcam.cn/abpromise> or contact our technical team.

### Terms and conditions

- Guarantee only valid for products bought direct from Abcam or one of our authorized distributors