

Anti-KIF7 antibody ab95884

★★★★★ [1 Abreviews](#) [2 References](#) [1 图像](#)

概述

产品名称	Anti-KIF7抗体
描述	兔多克隆抗体to KIF7
宿主	Rabbit
经测试应用	适用于: WB
种属反应性	与反应: Human 预测可用于: Rhesus monkey, Gorilla, Orangutan 
免疫原	Synthetic peptide corresponding to Human KIF7 aa 1200-1300. Database link: Q2M1P5  Run BLAST with  Run BLAST with
阳性对照	HeLa or 293T cell lysate
常规说明	Shelf Life: 1 year from date of receipt The Life Science industry has been in the grips of a reproducibility crisis for a number of years. Abcam is leading the way in addressing this with our range of recombinant monoclonal antibodies and knockout edited cell lines for gold-standard validation. Please check that this product meets your needs before purchasing. If you have any questions, special requirements or concerns, please send us an inquiry and/or contact our Support team ahead of purchase. Recommended alternatives for this product can be found below, along with publications, customer reviews and Q&As

性能

形式	Liquid
存放说明	Shipped at 4°C. Store at +4°C. The product can be stored for up to 12 months.
存储溶液	pH: 7 Preservative: 0.09% Sodium azide Constituent: Tris citrate/phosphate
纯度	Immunogen affinity purified
克隆	多克隆
同种型	IgG

应用

The Abpromise guarantee

Abpromise™ 承诺保证使用 ab95884 于以下的经测试应用

“应用说明”部分 下显示的仅为推荐的起始稀释度; 实际最佳的稀释度/浓度应由使用者检定。

应用	Ab 评论	说明
WB	★★★★★ (1)	1/2000 - 1/10000. Predicted molecular weight: 151 kDa.

靶标

功能

Acts as both a negative and positive regulator of sonic hedgehog (Shh) pathway, acting downstream of SMO. Negatively regulates the pathway by preventing inappropriate activation of the transcriptional activator GLI2 in the absence of ligand. Positively regulates the pathway by preventing the processing of the transcription factor GLI3 into its repressor form. Required for efficient localization of GLI3 to cilia in response to Shh. May also act as a ciliary motor.

组织特异性

Embryonic stem cells, melanotic melanoma and Jurkat T-cells.

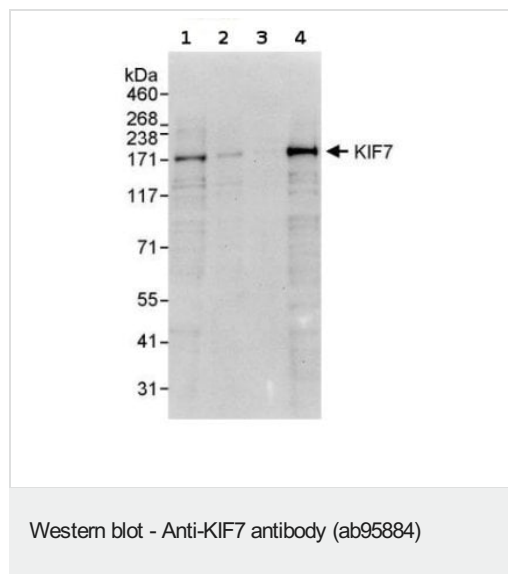
序列相似性

Belongs to the kinesin-like protein family. KIF27 subfamily.
Contains 1 kinesin-motor domain.

细胞定位

Cell projection > cilium. SMO is required for its accumulation within cilia. Moves from the cilia base to the cilia tip in response to activation of the Shh pathway.

图片



All lanes : Anti-KIF7 antibody (ab95884) at 0.4 µg/ml

Lane 1 : HeLa whole cell lysate at 50 µg

Lane 2 : HeLa whole cell lysate at 15 µg

Lane 3 : HeLa whole cell lysate at 5 µg

Lane 4 : 293T whole cell lysate at 50 µg

Developed using the ECL technique.

Predicted band size: 151 kDa

Exposure time: 30 seconds

Please note: All products are "FOR RESEARCH USE ONLY. NOT FOR USE IN DIAGNOSTIC PROCEDURES"

Our Abpromise to you: Quality guaranteed and expert technical support

- Replacement or refund for products not performing as stated on the datasheet
- Valid for 12 months from date of delivery

- Response to your inquiry within 24 hours
- We provide support in Chinese, English, French, German, Japanese and Spanish
- Extensive multi-media technical resources to help you
- We investigate all quality concerns to ensure our products perform to the highest standards

If the product does not perform as described on this datasheet, we will offer a refund or replacement. For full details of the Abpromise, please visit <https://www.abcam.cn/abpromise> or contact our technical team.

Terms and conditions

- Guarantee only valid for products bought direct from Abcam or one of our authorized distributors