

Anti-KIF5B antibody ab5629

★★★★★ [2 Abreviews](#) [15 References](#) [3 图像](#)

概述

产品名称	Anti-KIF5B抗体
描述	兔多克隆抗体to KIF5B
宿主	Rabbit
特异性	This antibody is specific for KIF5B and does not detect other kinesin isoforms.
经测试应用	适用于: ICC/IF, WB
种属反应性	与反应: Mouse, Rat, Human
免疫原	Synthetic peptide corresponding to Human KIF5B aa 376-396. Sequence: IDEQFDKEKANLEAFTVDKDI Database link: P33176 (Peptide available as ab41782)

 [Run BLAST with](#)

 [Run BLAST with](#)

常规说明

The Life Science industry has been in the grips of a reproducibility crisis for a number of years. Abcam is leading the way in addressing this with our range of recombinant monoclonal antibodies and knockout edited cell lines for gold-standard validation. Please check that this product meets your needs before purchasing.

If you have any questions, special requirements or concerns, please send us an inquiry and/or contact our Support team ahead of purchase. Recommended alternatives for this product can be found below, along with publications, customer reviews and Q&As

性能

形式	Liquid
存放说明	Shipped at 4°C. Store at +4°C short term (1-2 weeks). Upon delivery aliquot. Store at -20°C or -80°C. Avoid freeze / thaw cycle.
存储溶液	Preservative: 0.05% Sodium azide Constituents: 0.1% BSA, 99% PBS
纯度	Immunogen affinity purified
克隆	多克隆
同种型	IgG

应用

The Abpromise guarantee

Abpromise™承诺保证使用ab5629于以下的经测试应用

“应用说明”部分 下显示的仅为推荐的起始稀释度;实际最佳的稀释度/浓度应由使用者检定。

应用	Ab评论	说明
ICC/IF	★★★★★ (1)	1/250.
WB		1/2000 - 1/6000. Predicted molecular weight: 110 kDa.Can be blocked with Human KIF5B peptide (ab41782) .

靶标

功能

Microtubule-dependent motor required for normal distribution of mitochondria and lysosomes.

序列相似性

Belongs to the TRAFAC class myosin-kinesin ATPase superfamily. Kinesin family. Kinesin subfamily.

Contains 1 kinesin motor domain.

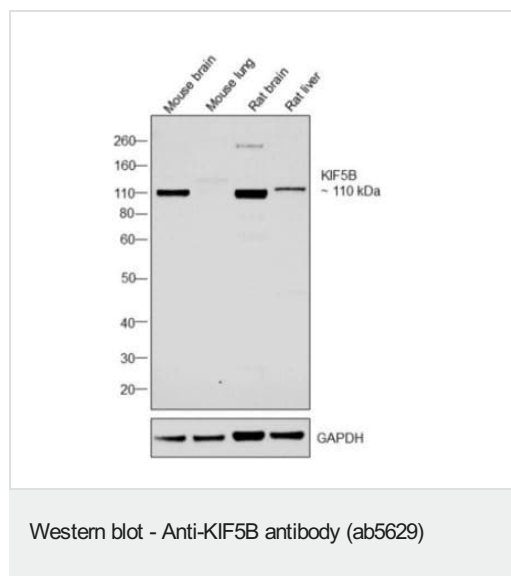
结构域

Composed of three structural domains: a large globular N-terminal domain which is responsible for the motor activity of kinesin (it hydrolyzes ATP and binds microtubule), a central alpha-helical coiled coil domain that mediates the heavy chain dimerization; and a small globular C-terminal domain which interacts with other proteins (such as the kinesin light chains), vesicles and membranous organelles.

细胞定位

Cytoplasm, cytoskeleton. Uniformly distributed between soma and neurites in hippocampal neurons.

图片



All lanes : Anti-KIF5B antibody (ab5629) at 1/2000 dilution

Lane 1 : Mouse brain Whole cell extract

Lane 2 : Mouse lung Whole cell extract

Lane 3 : Rat brain Whole cell extract

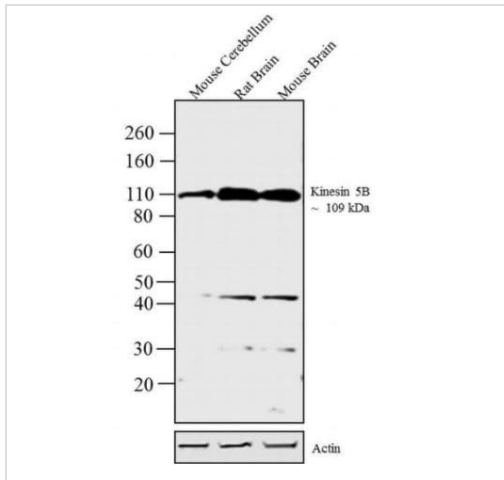
Lane 4 : Rat liver Whole cell extract

Lysates/proteins at 40 µg per lane.

Secondary

All lanes : Goat anti-Rabbit IgG (H+L),HRP at 1/4000 dilution

Predicted band size: 110 kDa



Western blot - Anti-KIF5B antibody (ab5629)

All lanes : Anti-KIF5B antibody (ab5629) at 1/4000 dilution

Lane 1 : Mouse Cerebellum whole cell extract

Lane 2 : Rat Brain whole cell extract

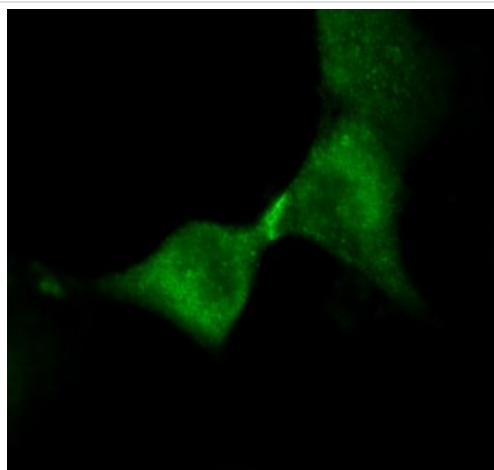
Lane 3 : Mouse Brain whole cell extract

Lysates/proteins at 30 µg per lane.

Secondary

All lanes : Goat anti-Rabbit IgG (H+L) HRP conjugate at 1/2500 dilution

Predicted band size: 110 kDa



Immunocytochemistry/ Immunofluorescence - Anti-KIF5B antibody (ab5629)

ab5629 labelling KIF5B (green) in HeLa cells. Cells fixed in 3.2% paraformaldehyde and permeabilized with 0.2% Triton X-100 for 30 minutes at 37°C were blocked with 3% BSA in PBS for 30 minutes at room temperature. Cells were incubated with the primary antibody (1:250) overnight at 4°C. A fluorescently-conjugated Goat anti-rabbit IgG was used as the secondary antibody (1:2000). Images were taken on wide-field fluorescent microscope at 63X magnification.

Please note: All products are "FOR RESEARCH USE ONLY. NOT FOR USE IN DIAGNOSTIC PROCEDURES"

Our Abpromise to you: Quality guaranteed and expert technical support

- Replacement or refund for products not performing as stated on the datasheet
- Valid for 12 months from date of delivery
- Response to your inquiry within 24 hours
- We provide support in Chinese, English, French, German, Japanese and Spanish
- Extensive multi-media technical resources to help you
- We investigate all quality concerns to ensure our products perform to the highest standards

If the product does not perform as described on this datasheet, we will offer a refund or replacement. For full details of the Abpromise, please visit <https://www.abcam.cn/abpromise> or contact our technical team.

Terms and conditions

- Guarantee only valid for products bought direct from Abcam or one of our authorized distributors