

Anti-KIF5B antibody ab25715

★★★★★ [2 Abreviews](#) [4 References](#) [1 图像](#)

概述

产品名称	Anti-KIF5B抗体
描述	兔多克隆抗体to KIF5B
宿主	Rabbit
特异性	This antibody detects total level of endogenous kinesin protein.
经测试应用	适用于: WB
种属反应性	与反应: Human, Pig
免疫原	Recombinant fragment corresponding to Human KIF5B. Stalk domain of human KIF5B (amino acids 331-906) expressed in E. coli (FKHC3).
常规说明	<p>The Life Science industry has been in the grips of a reproducibility crisis for a number of years. Abcam is leading the way in addressing this with our range of recombinant monoclonal antibodies and knockout edited cell lines for gold-standard validation. Please check that this product meets your needs before purchasing.</p> <p>If you have any questions, special requirements or concerns, please send us an inquiry and/or contact our Support team ahead of purchase. Recommended alternatives for this product can be found below, along with publications, customer reviews and Q&As</p>

性能

形式	Liquid
存放说明	Shipped at 4°C. Store at +4°C short term (1-2 weeks). Upon delivery aliquot. Store at -20°C long term.
存储溶液	pH: 7.40 Preservative: 0.097% Sodium azide
纯度	Protein A purified
纯化说明	Purified from rabbit serum by affinity chromatography. > 95% pure (by SDS PAGE).
克隆	多克隆
同种型	IgG

应用

The Abpromise guarantee

Abpromise™承诺保证使用ab25715于以下的经测试应用

“应用说明”部分 下显示的仅为推荐的起始稀释度;实际最佳的稀释度/浓度应由使用者检定。

应用	Ab评论	说明
WB	★★★★★ (1)	1/1000. Predicted molecular weight: 110 kDa.

靶标

功能 Microtubule-dependent motor required for normal distribution of mitochondria and lysosomes.

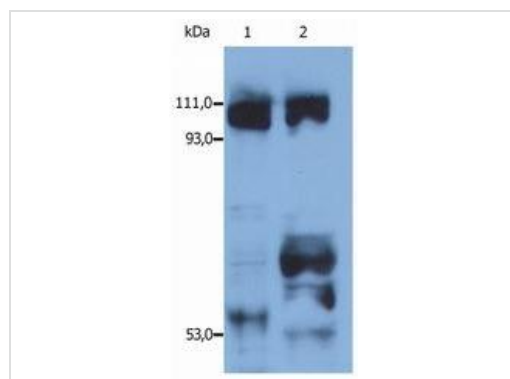
序列相似性 Belongs to the TRAFAC class myosin-kinesin ATPase superfamily. Kinesin family. Kinesin subfamily.

Contains 1 kinesin motor domain.

结构域 Composed of three structural domains: a large globular N-terminal domain which is responsible for the motor activity of kinesin (it hydrolyzes ATP and binds microtubule), a central alpha-helical coiled coil domain that mediates the heavy chain dimerization; and a small globular C-terminal domain which interacts with other proteins (such as the kinesin light chains), vesicles and membranous organelles.

细胞定位 Cytoplasm, cytoskeleton. Uniformly distributed between soma and neurites in hippocampal neurons.

图片



Western blot - Anti-KIF5B antibody (ab25715)

All lanes : Anti-KIF5B antibody (ab25715)

Lane 1 : Human HEK cell line

Lane 2 : Porcine brain

Predicted band size: 110 kDa

Please note: All products are "FOR RESEARCH USE ONLY. NOT FOR USE IN DIAGNOSTIC PROCEDURES"

Our Abpromise to you: Quality guaranteed and expert technical support

- Replacement or refund for products not performing as stated on the datasheet
- Valid for 12 months from date of delivery
- Response to your inquiry within 24 hours
- We provide support in Chinese, English, French, German, Japanese and Spanish

- Extensive multi-media technical resources to help you
- We investigate all quality concerns to ensure our products perform to the highest standards

If the product does not perform as described on this datasheet, we will offer a refund or replacement. For full details of the Abpromise, please visit <https://www.abcam.cn/abpromise> or contact our technical team.

Terms and conditions

- Guarantee only valid for products bought direct from Abcam or one of our authorized distributors