


Anti-KIF4A/KIF4 antibody [EPR5459] ab124903

重组 RabMAb

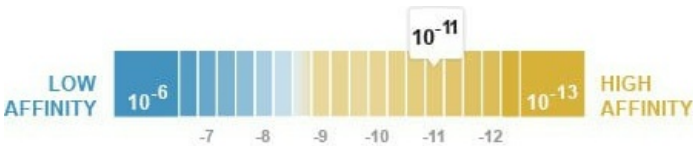
12 References 4 图像

概述

产品名称	Anti-KIF4A/KIF4抗体[EPR5459]
描述	兔单克隆抗体[EPR5459] to KIF4A/KIF4
宿主	Rabbit
经测试应用	适用于: Flow Cyt (Intra), WB 不适用于: ICC/IF,IHC-P or IP
种属反应性	与反应: Mouse, Human 预测可用于: Rat 
免疫原	Synthetic peptide within Human KIF4A/KIF4 aa 50-150. The exact sequence is proprietary.
阳性对照	Mouse thymus tissue lysate; HeLa cell lysate; 293T cell lysate; 293 cells
常规说明	<p>This product is a recombinant monoclonal antibody, which offers several advantages including:</p> <ul style="list-style-type: none">- High batch-to-batch consistency and reproducibility- Improved sensitivity and specificity- Long-term security of supply- Animal-free production <p>For more information see here.</p> <p>Our RabMAb[®] technology is a patented hybridoma-based technology for making rabbit monoclonal antibodies. For details on our patents, please refer to RabMAb[®] patents.</p>

性能

形式	Liquid
存放说明	Shipped at 4°C. Store at -20°C. Stable for 12 months at -20°C.
解离常数 (K _D)	K _D = 1.52 x 10 ⁻¹¹ M



[Learn more about K_D](#)

存储溶液	pH: 7.20
------	----------

纯度

克隆

克隆编号

同种型

IgG

应用

Abpromise™ 承诺保证使用ab124903于以下的经测试应用

“应用说明”部分下显示的仅为推荐的起始稀释度；实际最佳的稀释度/浓度应由使用者检定。

应用	Ab评论	说明
Flow Cyt (Intra)		1/100 - 1/500. ab172730 - Rabbit monoclonal IgG, is suitable for use as an isotype control with this antibody.
WB		1/1000 - 1/10000. Detects a band of approximately 170 kDa (predicted molecular weight: 140 kDa).

应用说明

Is unsuitable for ICC/IF, IHC-P or IP.

靶标

功能

Motor protein that translocates PRC1 to the plus ends of interdigitating spindle microtubules during the metaphase to anaphase transition, an essential step for the formation of an organized central spindle midzone and midbody and for successful cytokinesis. May play a role in mitotic chromosomal positioning and bipolar spindle stabilization.

组织特异性

Highly expressed in hematopoietic tissues, fetal liver, spleen, thymus and adult thymus and bone marrow. Lower levels are found in heart, testis, kidney, colon and lung.

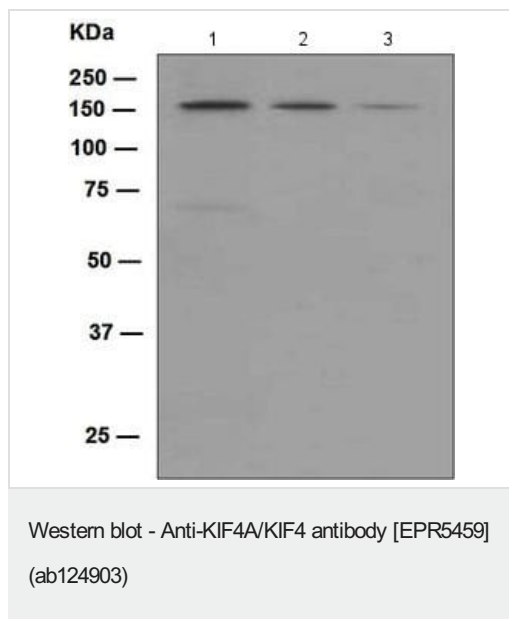
序列相似性

Belongs to the kinesin-like protein family. Chromokinesin subfamily. Contains 1 kinesin-motor domain.

细胞定位

Nucleus matrix. Cytoplasm > cytoskeleton > spindle. Midbody. Chromosome. Not present in the nucleolus. In early mitosis, associated with the mitotic spindle, in anaphase, localized to the spindle midzone and, in telophase and cytokinesis, to the midbody. In late cytokinesis, found in the center of the midbody. Associated with chromosomes at all stages of mitosis.

图片



All lanes : Anti-KIF4A/KIF4 antibody [EPR5459] (ab124903) at 1/1000 dilution

Lane 1 : Mouse thymus tissue lysate

Lane 2 : HeLa cell lysate

Lane 3 : 293T (Human embryonic kidney epithelial cell) cell lysate

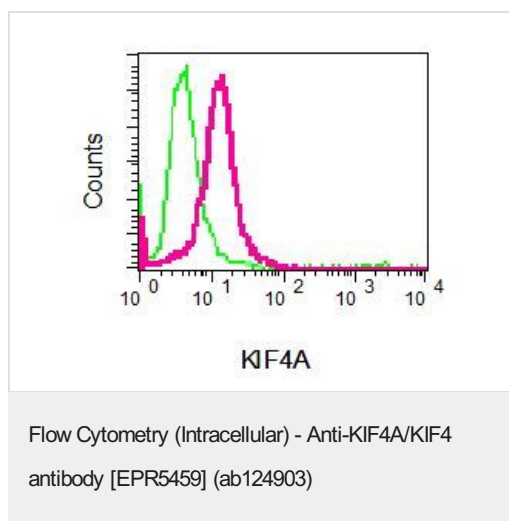
Lysates/proteins at 10 µg per lane.

Secondary

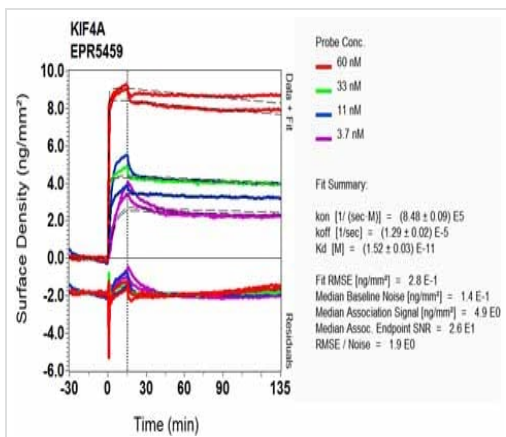
All lanes : HRP labelled goat anti-rabbit at 1/2000 dilution

Predicted band size: 140 kDa

Observed band size: 170 kDa



Intracellular flow cytometric analysis of permeabilized 293 cells using ab124903 at 1/10 dilution (red) or a rabbit IgG negative control (green).



SPR Scanning - Anti-KIF4A/KIF4 antibody
[EPR5459] (ab124903)

Equilibrium dissociation constant (K_D)

Learn more about K_D

[Click here to learn more about \$K_D\$](#)

Why choose a
recombinant antibody?



**Research with
confidence**
Consistent and
reproducible results



**Long-term and
scalable supply**
Recombinant
technology



**Success from the
first experiment**
Confirmed
specificity



**Ethical standards
compliant**
Animal-free
production

Anti-KIF4A/KIF4 antibody [EPR5459] (ab124903)

Please note: All products are "FOR RESEARCH USE ONLY. NOT FOR USE IN DIAGNOSTIC PROCEDURES"

Our Abpromise to you: Quality guaranteed and expert technical support

- Replacement or refund for products not performing as stated on the datasheet
- Valid for 12 months from date of delivery
- Response to your inquiry within 24 hours
- We provide support in Chinese, English, French, German, Japanese and Spanish
- Extensive multi-media technical resources to help you
- We investigate all quality concerns to ensure our products perform to the highest standards

If the product does not perform as described on this datasheet, we will offer a refund or replacement. For full details of the Abpromise, please visit <https://www.abcam.cn/abpromise> or contact our technical team.

Terms and conditions

- Guarantee only valid for products bought direct from Abcam or one of our authorized distributors