

Anti-KIF22 antibody [EP2748] ab108535

敲除验证 RabMAb

2 图像

概述

产品名称	Anti-KIF22抗体[EP2748]
描述	兔单克隆抗体[EP2748] to KIF22
宿主	Rabbit
经测试应用	适用于: WB 不适用于: Flow Cyt, ICC/IF, IHC-P or IP
种属反应性	与反应: Human
免疫原	Synthetic peptide. This information is proprietary to Abcam and/or its suppliers.
阳性对照	HEK-293T, HeLa, MCF7, and SH-SY5Y cell lysates
常规说明	<p>Our RabMAb[®] technology is a patented hybridoma-based technology for making rabbit monoclonal antibodies. For details on our patents, please refer to RabMAb[®] patents.</p> <p>The Life Science industry has been in the grips of a reproducibility crisis for a number of years. Abcam is leading the way in addressing this with our range of recombinant monoclonal antibodies and knockout edited cell lines for gold-standard validation. Please check that this product meets your needs before purchasing.</p> <p>If you have any questions, special requirements or concerns, please send us an inquiry and/or contact our Support team ahead of purchase. Recommended alternatives for this product can be found below, along with publications, customer reviews and Q&As</p> <p>Mouse, Rat: We have preliminary internal testing data to indicate this antibody may not react with these species. Please contact us for more information.</p>

性能

形式	Liquid
存放说明	Shipped at 4°C. Store at -20°C.
存储溶液	pH: 7.20 Preservative: 0.05% Sodium azide Constituents: 0.1% BSA, 40% Glycerol (glycerin, glycerine), 9.85% Tris glycine, 50% Tissue culture supernatant
纯度	Tissue culture supernatant

克隆 单克隆
 克隆编号 EP2748
 同种型 IgG

应用

The Abpromise guarantee **Abpromise™**承诺保证使用ab108535于以下的经测试应用

“应用说明”部分下显示的仅为推荐的起始稀释度;实际最佳的稀释度/浓度应由使用者检定。

应用	Ab评论	说明
WB		1/1000 - 1/10000. Predicted molecular weight: 73 kDa.

应用说明 Is unsuitable for Flow Cyt, ICC/IF, IHC-P or IP.

靶标

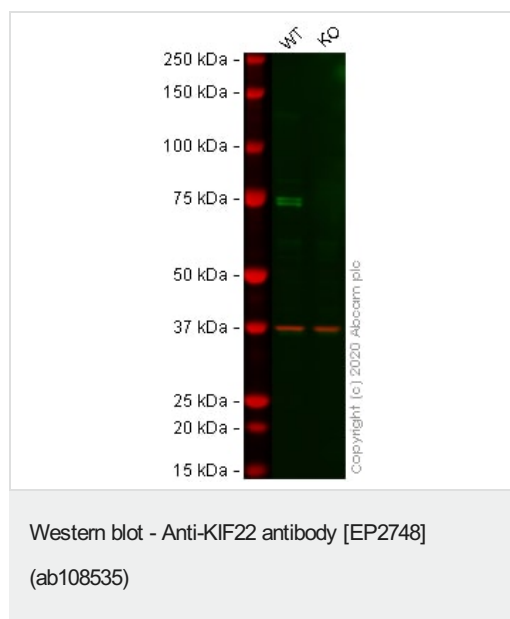
功能 Kinesin family that is involved in spindle formation and the movements of chromosomes during mitosis and meiosis. Binds to microtubules and to DNA.

序列相似性 Belongs to the kinesin-like protein family.
 Contains 1 kinesin-motor domain.

翻译后修饰 Ubiquitinated; mediated by SIAH1 and leading to its subsequent proteasomal degradation.
 Phosphorylated upon DNA damage, probably by ATM or ATR.

细胞定位 Nucleus. Cytoplasm > cytoskeleton.

图片



All lanes : Anti-KIF22 antibody [EP2748] (ab108535) at 1/1000 dilution

Lane 1 : Wild-type HEK-293T (Human epithelial cell line from embryonic kidney transformed with large T antigen) whole cell lysate

Lane 2 : KIF22 knockout HEK-293T cell lysate

Lysates/proteins at 20 µg per lane.

Performed under reducing conditions.

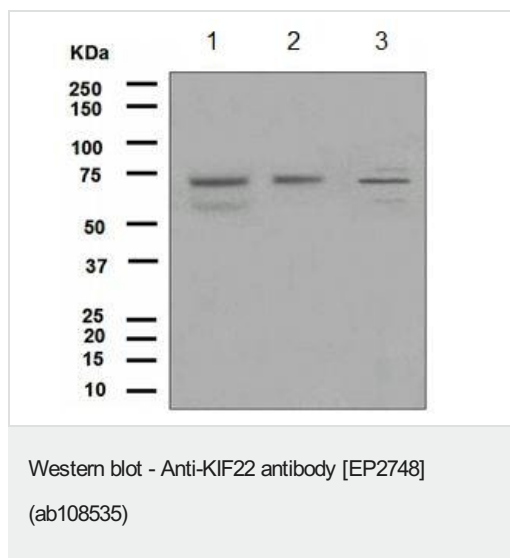
Predicted band size: 73 kDa

Observed band size: 75 kDa

Lanes 1 - 2: Merged signal (red and green). Green - ab108535

observed at 75 kDa. Red - loading control **ab8245** (Mouse anti-GAPDH antibody [6C5]) observed at 37kDa.

ab108535 was shown to react with KIF22 in HEK-293T wild-type cells in western blot with loss of signal observed in KIF22 knockout cell line **ab266817** (KIF22 knockout cell lysate **ab258018**). Wild-type and KIF22 knockout HEK-293T cell lysates were subjected to SDS-PAGE. Membranes were blocked in 3% milk in TBS-T (0.1% Tween[®]) before incubation with ab108535 and **ab8245** (Mouse anti-GAPDH antibody [6C5]) overnight at 4°C at a 1 in 1000 dilution and a 1 in 20000 dilution respectively. Blots were incubated with Goat anti-Rabbit IgG H&L (IRDye[®] 800CW) preabsorbed (**ab216773**) and Goat anti-Mouse IgG H&L (IRDye[®] 680RD) preabsorbed (**ab216776**) secondary antibodies at 1 in 20000 dilution for 1 hour at room temperature before imaging.



All lanes : Anti-KIF22 antibody [EP2748] (ab108535) at 1/1000 dilution

Lane 1 : HeLa cell lysate

Lane 2 : MCF7 cell lysate

Lane 3 : SH-SY5Y cell lysate

Lysates/proteins at 10 µg per lane.

Secondary

All lanes : HRP-labelled goat anti-rabbit at 1/2000 dilution

Predicted band size: 73 kDa

Please note: All products are "FOR RESEARCH USE ONLY. NOT FOR USE IN DIAGNOSTIC PROCEDURES"

Our Abpromise to you: Quality guaranteed and expert technical support

- Replacement or refund for products not performing as stated on the datasheet
- Valid for 12 months from date of delivery
- Response to your inquiry within 24 hours
- We provide support in Chinese, English, French, German, Japanese and Spanish
- Extensive multi-media technical resources to help you
- We investigate all quality concerns to ensure our products perform to the highest standards

If the product does not perform as described on this datasheet, we will offer a refund or replacement. For full details of the Abpromise, please visit <https://www.abcam.cn/abpromise> or contact our technical team.

Terms and conditions

- Guarantee only valid for products bought direct from Abcam or one of our authorized distributors