

Anti-KIF1C antibody ab72238

[2 References](#) [2 图像](#)

概述

产品名称	Anti-KIF1C抗体
描述	兔多克隆抗体to KIF1C
宿主	Rabbit
经测试应用	适用于: WB, IP
种属反应性	与反应: Human
免疫原	Synthetic peptide corresponding to Human KIF1C aa 850-950. Database link: O43896
阳性对照	WB: HeLa whole cell lysate. IP: HeLa whole cell lysate.
常规说明	<p>The Life Science industry has been in the grips of a reproducibility crisis for a number of years. Abcam is leading the way in addressing this with our range of recombinant monoclonal antibodies and knockout edited cell lines for gold-standard validation. Please check that this product meets your needs before purchasing.</p> <p>If you have any questions, special requirements or concerns, please send us an inquiry and/or contact our Support team ahead of purchase. Recommended alternatives for this product can be found below, along with publications, customer reviews and Q&As</p>

性能

形式	Liquid
存放说明	Shipped at 4°C. Upon delivery aliquot and store at -20°C. Avoid freeze / thaw cycles.
存储溶液	pH: 6.8 Preservative: 0.09% Sodium azide Constituents: 0.1% BSA, Tris buffered saline
纯度	Immunogen affinity purified
克隆	多克隆
同种型	IgG

应用

The Abpromise guarantee

Abpromise™ 承诺保证使用ab72238于以下的经测试应用

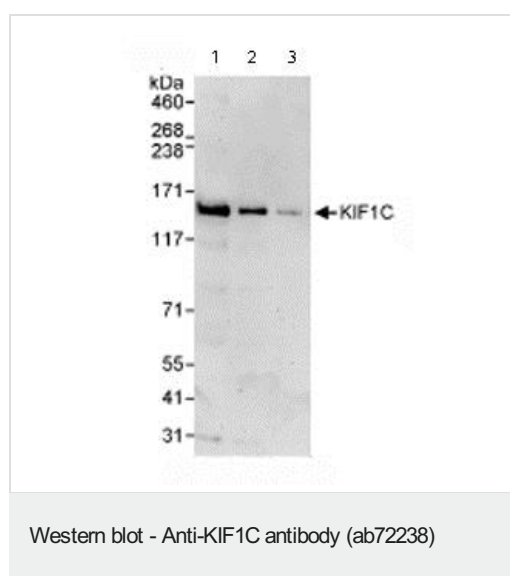
“应用说明”部分 下显示的仅为推荐的起始稀释度;实际最佳的稀释度/浓度应由使用者检定。

应用	Ab评论	说明
WB		1/2000 - 1/10000. Detects a band of approximately 160 kDa (predicted molecular weight: 123 kDa).
IP		Use at 2-5 µg/mg of lysate.

靶标

功能	Motor required for the retrograde transport of Golgi vesicles to the endoplasmic reticulum. Has a microtubule plus end-directed motility.
组织特异性	Expressed in all tissues examined, with most abundant expression in heart and skeletal muscle.
疾病相关	Spastic ataxia 2, autosomal recessive
序列相似性	Belongs to the TRAFAC class myosin-kinesin ATPase superfamily. Kinesin family. Unc-104 subfamily. Contains 1 FHA domain. Contains 1 kinesin motor domain.
翻译后修饰	Phosphorylated on tyrosine residues.
细胞定位	Cytoplasm, cytoskeleton.

图片



All lanes : Anti-KIF1C antibody (ab72238) at 0.04 µg/ml

Lane 1 : Whole cell lysate from HeLa cells at 50 µg

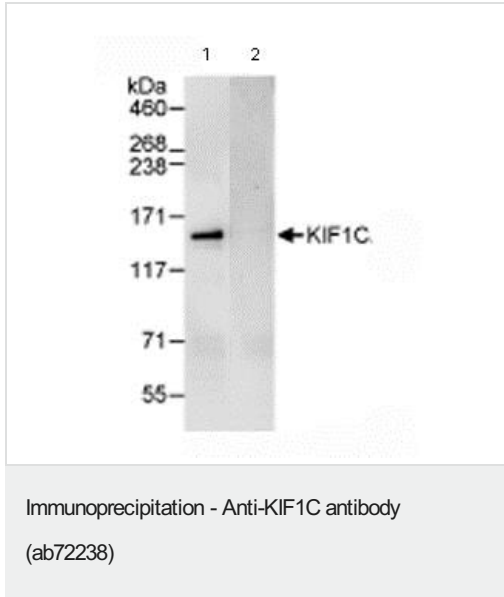
Lane 2 : Whole cell lysate from HeLa cells at 15 µg

Lane 3 : Whole cell lysate from HeLa cells at 5 µg

Predicted band size: 123 kDa

Observed band size: 160 kDa

Various other bands are detected from 31 kDa upwards.



Immunoprecipitation/ Western Blot of KIF1C.

Lane 1: ab72238 at 3µg/mg whole cell lysate.

Lane 2: Control IgG.

ab72238 at 1µg/ml for WB.

Whole cell lysate from Hela cells at 1mg for IP, 20% of IP loaded.

Chemiluminescence with an exposure time of 30 seconds.

Please note: All products are "FOR RESEARCH USE ONLY. NOT FOR USE IN DIAGNOSTIC PROCEDURES"

Our Abpromise to you: Quality guaranteed and expert technical support

- Replacement or refund for products not performing as stated on the datasheet
- Valid for 12 months from date of delivery
- Response to your inquiry within 24 hours
- We provide support in Chinese, English, French, German, Japanese and Spanish
- Extensive multi-media technical resources to help you
- We investigate all quality concerns to ensure our products perform to the highest standards

If the product does not perform as described on this datasheet, we will offer a refund or replacement. For full details of the Abpromise, please visit <https://www.abcam.cn/abpromise> or contact our technical team.

Terms and conditions

- Guarantee only valid for products bought direct from Abcam or one of our authorized distributors