

Anti-KIF18B antibody ab121798

★★★★★ [1 Abreviews](#) [6 References](#) [5 图像](#)

概述

产品名称	Anti-KIF18B抗体
描述	兔多克隆抗体to KIF18B
宿主	Rabbit
经测试应用	适用于: ICC, IHC-P
种属反应性	与反应: Human
免疫原	antigen sequence, corresponding to amino acids 15-111 (STLQVVVRVR PPTPRELDSQ RRPVVQVVDE RVLVFNPEEP DGGFPLKKGW GTHDGPKKKG KDLTFVFDRV FGEAATQQDV FQHTTHSVLD SFLQGYN) of Human KIF18B. Run BLAST with ExPASy Run BLAST with NCBI
阳性对照	IHC-P: Human lymph node and duodenum tissues; ICC: Human U-251 MG cells.
常规说明	<p>The Life Science industry has been in the grips of a reproducibility crisis for a number of years. Abcam is leading the way in addressing this with our range of recombinant monoclonal antibodies and knockout edited cell lines for gold-standard validation. Please check that this product meets your needs before purchasing.</p> <p>If you have any questions, special requirements or concerns, please send us an inquiry and/or contact our Support team ahead of purchase. Recommended alternatives for this product can be found below, along with publications, customer reviews and Q&As</p>

性能

形式	Liquid
存放说明	Shipped at 4°C. Upon delivery aliquot and store at -20°C. Avoid repeated freeze / thaw cycles.
存储溶液	pH: 7.2 Preservative: 0.02% Sodium azide Constituents: 59% PBS, 40% Glycerol (glycerin, glycerine)
纯度	Immunogen affinity purified
克隆	多克隆
同种型	IgG

应用

The Abpromise guarantee

Abpromise™ 承诺保证使用ab121798于以下的经测试应用

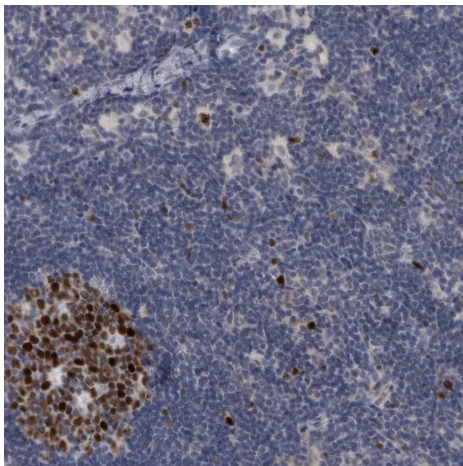
“应用说明”部分 下显示的仅为推荐的起始稀释度;实际最佳的稀释度/浓度应由使用者检定。

应用	Ab评论	说明
ICC		Use a concentration of 0.25 - 2 µg/ml.
IHC-P		1/50 - 1/200. Perform heat mediated antigen retrieval with citrate buffer pH 6 before commencing with IHC staining protocol.

靶标

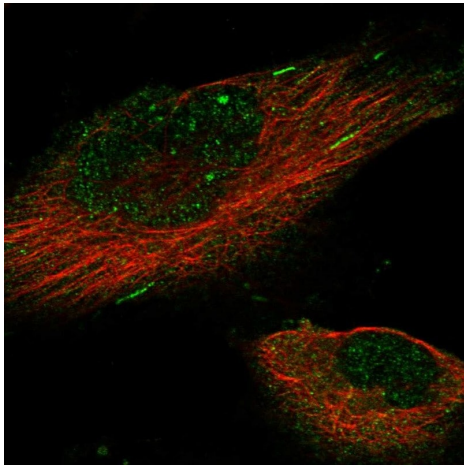
功能	In complex with KIF2C, constitutes the major microtubule plus-end depolymerizing activity in mitotic cells. Its major role may be to transport KIF2C and/or MAPRE1 along microtubules.
组织特异性	Shows a prominent expression in the amygdala.
序列相似性	Belongs to the TRAFAC class myosin-kinesin ATPase superfamily. Kinesin family. Contains 1 kinesin motor domain.
发展阶段	Regulated in a cell cycle-dependent manner. Not expressed in the G1 phase. In G2, sequestered in the nucleus. Maximal levels seen at late G2/M phase and early prometaphase. Degraded at the metaphase-anaphase transition (at protein level).
细胞定位	Nucleus. Cytoplasm. Cytoplasm, cytoskeleton. Present predominantly in the nucleus and to a lesser extent in the cytoplasm of interphase cells. During mitosis, found to be closely associated with astral microtubule plus ends emanating from the spindle pole during prometaphase and metaphase.

图片



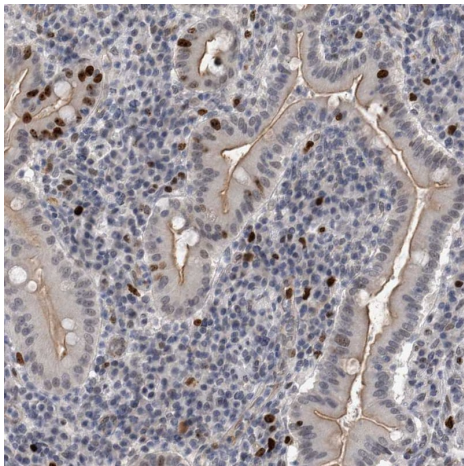
Immunohistochemistry (Formalin/PFA-fixed paraffin-embedded sections) analysis of human lymph node tissue labelling KIF18B with ab121798 at 1/50 dilution. Heat mediated antigen retrieval performed with citrate buffer pH 6 before commencing with IHC staining protocol.

Immunohistochemistry (Formalin/PFA-fixed paraffin-embedded sections) - Anti-KIF18B antibody (ab121798)



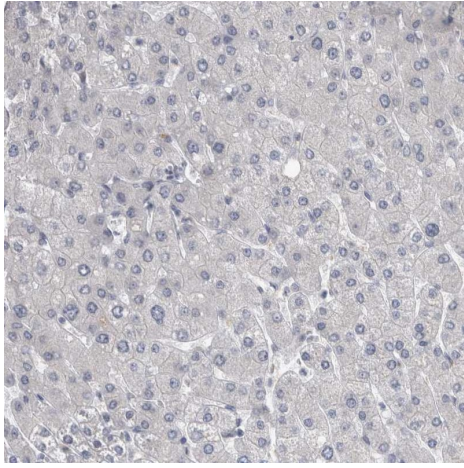
Immunocytochemistry analysis of U-251 MG (human brain glioma cell line) cells labelling KIF18B with ab121798 at 2 µg/mL.

Immunocytochemistry - Anti-KIF18B antibody
(ab121798)



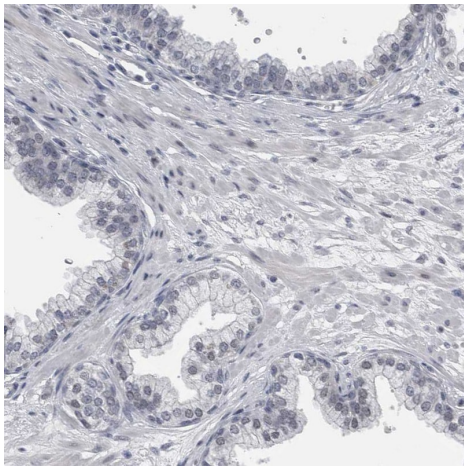
Immunohistochemistry (Formalin/PFA-fixed paraffin-embedded sections) analysis of human duodenum tissue labelling KIF18B with ab121798 at 1/50 dilution. Heat mediated antigen retrieval performed with citrate buffer pH 6 before commencing with IHC staining protocol.

Immunohistochemistry (Formalin/PFA-fixed paraffin-embedded sections) - Anti-KIF18B antibody
(ab121798)



Immunohistochemistry (Formalin/PFA-fixed paraffin-embedded sections) - Anti-KIF18B antibody (ab121798)

Immunohistochemistry (Formalin/PFA-fixed paraffin-embedded sections) analysis of human liver tissue labelling KIF18B with ab121798 at 1/50 dilution. Heat mediated antigen retrieval performed with citrate buffer pH 6 before commencing with IHC staining protocol.



Immunohistochemistry (Formalin/PFA-fixed paraffin-embedded sections) - Anti-KIF18B antibody (ab121798)

Immunohistochemistry (Formalin/PFA-fixed paraffin-embedded sections) analysis of human prostate tissue labelling KIF18B with ab121798 at 1/50 dilution. Heat mediated antigen retrieval performed with citrate buffer pH 6 before commencing with IHC staining protocol.

Please note: All products are "FOR RESEARCH USE ONLY. NOT FOR USE IN DIAGNOSTIC PROCEDURES"

Our Abpromise to you: Quality guaranteed and expert technical support

- Replacement or refund for products not performing as stated on the datasheet
- Valid for 12 months from date of delivery
- Response to your inquiry within 24 hours
- We provide support in Chinese, English, French, German, Japanese and Spanish
- Extensive multi-media technical resources to help you
- We investigate all quality concerns to ensure our products perform to the highest standards

If the product does not perform as described on this datasheet, we will offer a refund or replacement. For full details of the Abpromise,

please visit <https://www.abcam.cn/abpromise> or contact our technical team.

Terms and conditions

- Guarantee only valid for products bought direct from Abcam or one of our authorized distributors