


Anti-KIF13A antibody ab72414

2 图像

概述

产品名称	Anti-KIF13A抗体
描述	兔多克隆抗体to KIF13A
宿主	Rabbit
经测试应用	适用于: WB, IP
种属反应性	与反应: Human 预测可用于: Horse, Chimpanzee, Rhesus monkey, Gorilla, Orangutan, Bat 
免疫原	Synthetic peptide corresponding to a region between residues 1675 and 1725 of human KIF13A (NP_071396.3)
阳性对照	HeLa whole cell lysate.
常规说明	<p>The Life Science industry has been in the grips of a reproducibility crisis for a number of years. Abcam is leading the way in addressing this with our range of recombinant monoclonal antibodies and knockout edited cell lines for gold-standard validation. Please check that this product meets your needs before purchasing.</p> <p>If you have any questions, special requirements or concerns, please send us an inquiry and/or contact our Support team ahead of purchase. Recommended alternatives for this product can be found below, along with publications, customer reviews and Q&As</p>

性能

形式	Liquid
存放说明	Shipped at 4°C. Upon delivery aliquot and store at -20°C. Avoid freeze / thaw cycles.
存储溶液	pH: 6.8 Preservative: 0.09% Sodium azide Constituents: 0.1% BSA, Tris buffered saline
纯度	Immunogen affinity purified
纯化说明	ab72414 was affinity purified using an epitope specific to KIF13A immobilized on solid support.
克隆	多克隆
同种型	IgG

The Abpromise guarantee **Abpromise™承诺保证使用ab72414于以下的经测试应用**

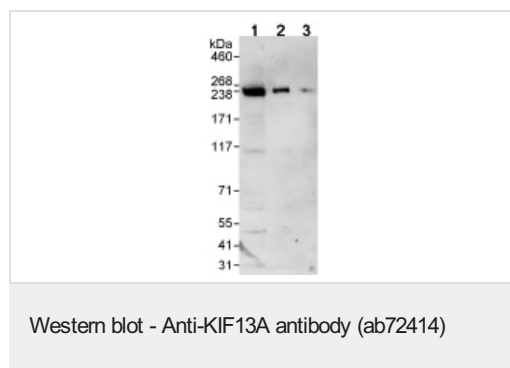
“应用说明”部分 下显示的仅为推荐的起始稀释度;实际最佳的稀释度/浓度应由使用者检定。

应用	Ab评论	说明
WB		1/2000 - 1/10000. Detects a band of approximately 238 kDa (predicted molecular weight: 203 kDa).
IP		Use at 2-5 µg/mg of lysate.

靶标

功能	<p>Plus end-directed microtubule-dependent motor protein involved in intracellular transport and regulating various processes such as mannose-6-phosphate receptor (M6PR) transport to the plasma membrane, endosomal sorting during melanosome biogenesis and cytokinesis. Mediates the transport of M6PR-containing vesicles from trans-Golgi network to the plasma membrane via direct interaction with the AP-1 complex. During melanosome maturation, required for delivering melanogenic enzymes from recycling endosomes to nascent melanosomes by creating peripheral recycling endosomal subdomains in melanocytes. Also required for the abscission step in cytokinesis: mediates translocation of ZFYVE26, and possibly TTC19, to the midbody during cytokinesis.</p>
组织特异性	Widely expressed, with highest levels in heart, brain and skeletal muscle.
序列相似性	<p>Belongs to the kinesin-like protein family.</p> <p>Contains 1 FHA domain.</p> <p>Contains 1 kinesin-motor domain.</p>
发展阶段	Expressed at very low level in most fetal tissues, but at higher levels in skeletal muscle and lung.
细胞定位	Cytoplasm > cytoskeleton > centrosome. Midbody. Endosome membrane. Golgi apparatus membrane. Recruited to the midbody during cytokinesis.

图片



All lanes : Anti-KIF13A antibody (ab72414) at 0.04 µg/ml

Lane 1 : HeLa whole cell lysate at 50 µg

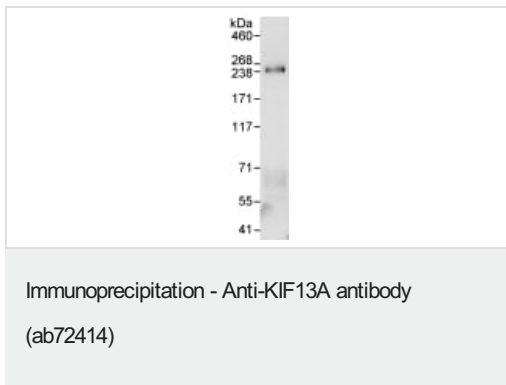
Lane 2 : HeLa whole cell lysate at 15 µg

Lane 3 : HeLa whole cell lysate at 5 µg

Predicted band size: 203 kDa

Observed band size: 238 kDa

Exposure time: 3 minutes



Detection of KIF13A by Western Blot of Immunoprecipitate.
ab72414, at 1µg/ml, staining KIF13A in HeLa whole cell lysate
immunoprecipitated using ab72414 at 3µg/mg lysate (1 mg/IP; 20%
of IP loaded/lane).
Detection: Chemiluminescence with exposure time of 30 seconds.

Please note: All products are "FOR RESEARCH USE ONLY. NOT FOR USE IN DIAGNOSTIC PROCEDURES"

Our Abpromise to you: Quality guaranteed and expert technical support

- Replacement or refund for products not performing as stated on the datasheet
- Valid for 12 months from date of delivery
- Response to your inquiry within 24 hours
- We provide support in Chinese, English, French, German, Japanese and Spanish
- Extensive multi-media technical resources to help you
- We investigate all quality concerns to ensure our products perform to the highest standards

If the product does not perform as described on this datasheet, we will offer a refund or replacement. For full details of the Abpromise, please visit <https://www.abcam.cn/abpromise> or contact our technical team.

Terms and conditions

- Guarantee only valid for products bought direct from Abcam or one of our authorized distributors