


Anti-KIAA1688 antibody ab93780

2 图像

概述

产品名称	Anti-KIAA1688抗体
描述	兔多克隆抗体to KIAA1688
宿主	Rabbit
经测试应用	适用于: WB, IP
种属反应性	与反应: Human 预测可用于: Chimpanzee, Rhesus monkey, Gorilla, Tilapia 
免疫原	Synthetic peptide corresponding to Human KIAA1688 aa 50-150. Database link: Q9C0H5
阳性对照	HeLa cell lysate 293 T cell lysate
常规说明	<p>The Life Science industry has been in the grips of a reproducibility crisis for a number of years. Abcam is leading the way in addressing this with our range of recombinant monoclonal antibodies and knockout edited cell lines for gold-standard validation. Please check that this product meets your needs before purchasing.</p> <p>If you have any questions, special requirements or concerns, please send us an inquiry and/or contact our Support team ahead of purchase. Recommended alternatives for this product can be found below, along with publications, customer reviews and Q&As</p>

性能

形式	Liquid
存放说明	Shipped at 4°C. Upon delivery aliquot and store at -20°C. Avoid freeze / thaw cycles.
存储溶液	pH: 7 Preservative: 0.09% Sodium azide Constituent: Tris citrate/phosphate
纯度	Immunogen affinity purified
克隆	多克隆
同种型	IgG

应用

The Abpromise guarantee Abpromise™承诺保证使用ab93780于以下的经测试应用

“应用说明”部分 下显示的仅为推荐的起始稀释度;实际最佳的稀释度/浓度应由使用者检定。

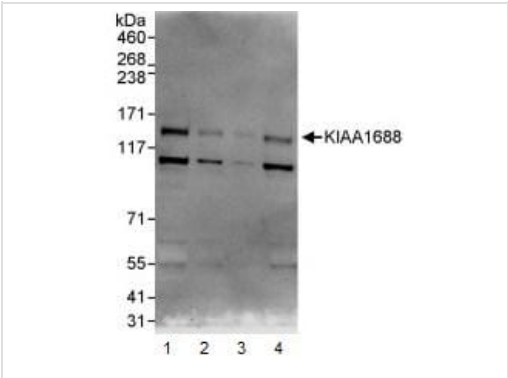
应用	Ab评论	说明
WB		1/2000 - 1/10000. Predicted molecular weight: 121 kDa.
IP		Use at 5-15 µg/mg of lysate.

靶标

相关性 KIAA1688 was identified as a hypothetical protein predicted from the in silico analysis of long cDNAs isolated in the Kazusa cDNA sequencing project. The function of KIAA1688 has not been characterized.

细胞定位 Nuclear

图片



Western blot - Anti-KIAA1688 antibody (ab93780)

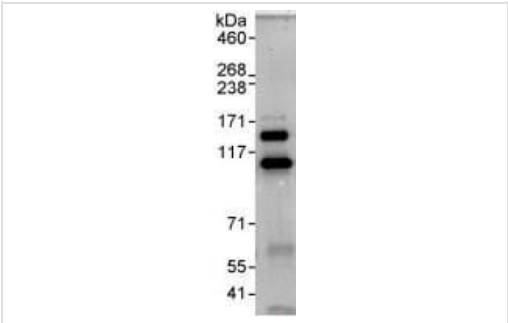
All lanes : Anti-KIAA1688 antibody (ab93780) at 0.1 µg/ml

- Lane 1 :** HeLa cell lysate at 50 µg
- Lane 2 :** HeLa cell lysate at 15 µg
- Lane 3 :** HeLa cell lysate at 5 µg
- Lane 4 :** 293T cell lysate at 50 µg

Developed using the ECL technique.

Predicted band size: 121 kDa

Exposure time: 3 minutes



Immunoprecipitation - Anti-KIAA1688 antibody (ab93780)

Immunoprecipitation : 1 mg of HeLa cell lysate immunoprecipitated with ab93780 at 10 µg/mg lysate; 20% of immunoprecipitate loaded in lane

Western Blot : KIAA1688 antibody (ab93780) at 1 µg/ml

Developed using the ECL technique

Exposure time : 3 minutes

Please note: All products are "FOR RESEARCH USE ONLY. NOT FOR USE IN DIAGNOSTIC PROCEDURES"

Our Abpromise to you: Quality guaranteed and expert technical support

- Replacement or refund for products not performing as stated on the datasheet
- Valid for 12 months from date of delivery
- Response to your inquiry within 24 hours

- We provide support in Chinese, English, French, German, Japanese and Spanish
- Extensive multi-media technical resources to help you
- We investigate all quality concerns to ensure our products perform to the highest standards

If the product does not perform as described on this datasheet, we will offer a refund or replacement. For full details of the Abpromise, please visit <https://www.abcam.cn/abpromise> or contact our technical team.

Terms and conditions

- Guarantee only valid for products bought direct from Abcam or one of our authorized distributors