

# Anti-KIAA1468 antibody ab122576

## 2 图像

### 概述

产品名称	Anti-KIAA1468抗体
描述	兔多克隆抗体to KIAA1468
宿主	Rabbit
经测试应用	适用于: IHC-P, WB
种属反应性	与反应: Human
免疫原	antigen sequence: NVLLAKREEL IPLILCTACL HPEPKERDQL LHILFNLIKRPDDEQRQMIL TGCVAFARHV GPTRVEAELL PQCWEQINHK YPERRLLV, corresponding to internal sequence amino acids 533-620 of Human KIAA1468. <a href="#">Run BLAST with Expasy</a> <a href="#">Run BLAST with NCBI</a>
阳性对照	Human kidney tissue, Human liver lysate.
常规说明	<p>The Life Science industry has been in the grips of a reproducibility crisis for a number of years. Abcam is leading the way in addressing this with our range of recombinant monoclonal antibodies and knockout edited cell lines for gold-standard validation. Please check that this product meets your needs before purchasing.</p> <p>If you have any questions, special requirements or concerns, please send us an inquiry and/or contact our Support team ahead of purchase. Recommended alternatives for this product can be found below, along with publications, customer reviews and Q&amp;As</p>

### 性能

形式	Liquid
存放说明	Shipped at 4°C. Store at -20°C or -80°C. Avoid freeze / thaw cycle. Store undiluted.
存储溶液	pH: 7.20 Preservative: 0.02% Sodium azide Constituents: 59% PBS, 40% Glycerol (glycerin, glycerine)
纯度	Immunogen affinity purified
克隆	多克隆
同种型	IgG

### 应用

The Abpromise guarantee

Abpromise™承诺保证使用ab122576于以下的经测试应用

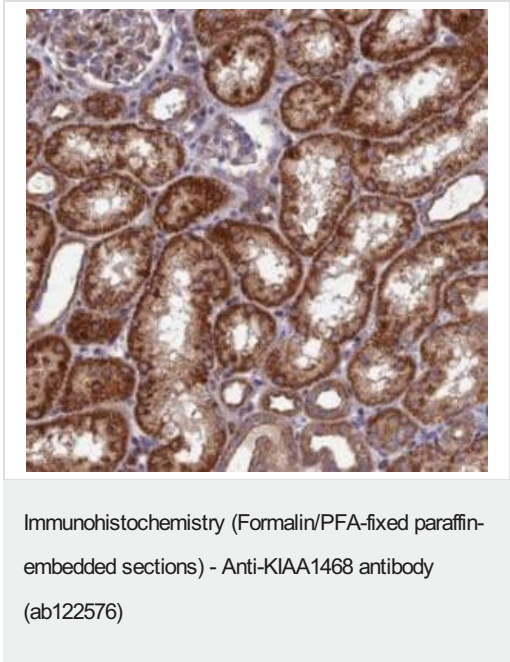
“应用说明”部分 下显示的仅为推荐的起始稀释度;实际最佳的稀释度/浓度应由使用者检定。

应用	Ab评论	说明
IHC-P		1/50 - 1/200. Perform heat mediated antigen retrieval with citrate buffer pH 6 before commencing with IHC staining protocol.
WB		Use a concentration of 0.04 - 0.4 µg/ml.

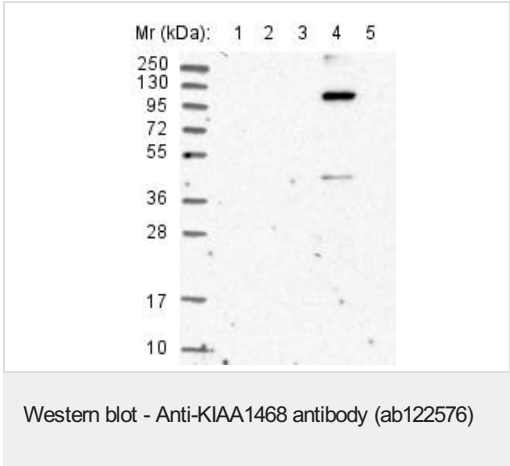
靶标

序列相似性	Contains 3 HEAT repeats. Contains 1 LisH domain.
-------	---

图片



ab122576, at 1/50 dilution, staining KIAA1468 in paraffin-embedded Human kidney tissue by Immunohistochemistry.



All lanes : Anti-KIAA1468 antibody (ab122576) at 1/250 dilution

Lane 1 : RT 4 cell lysate

Lane 2 : U 251 MG cell lysate

Lane 3 : Human plasma

Lane 4 : Human liver lysate

Lane 5 : Human tonsil lysate

Developed using the ECL technique.

**Please note:** All products are "FOR RESEARCH USE ONLY. NOT FOR USE IN DIAGNOSTIC PROCEDURES"

### **Our Abpromise to you: Quality guaranteed and expert technical support**

---

- Replacement or refund for products not performing as stated on the datasheet
- Valid for 12 months from date of delivery
- Response to your inquiry within 24 hours
  
- We provide support in Chinese, English, French, German, Japanese and Spanish
- Extensive multi-media technical resources to help you
- We investigate all quality concerns to ensure our products perform to the highest standards

If the product does not perform as described on this datasheet, we will offer a refund or replacement. For full details of the Abpromise, please visit <https://www.abcam.cn/abpromise> or contact our technical team.

### **Terms and conditions**

---

- Guarantee only valid for products bought direct from Abcam or one of our authorized distributors