

# Anti-KIAA0802 antibody ab100914

## 2 图像

### 概述

---

<b>产品名称</b>	Anti-KIAA0802抗体
<b>描述</b>	兔多克隆抗体to KIAA0802
<b>宿主</b>	Rabbit
<b>经测试应用</b>	<b>适用于:</b> WB, IP
<b>种属反应性</b>	<b>与反应:</b> Human
<b>免疫原</b>	A region between amino acids 926-976 of Human KIAA0802 (AAH40542.2).
<b>阳性对照</b>	HeLa lysate
<b>常规说明</b>	<p>Antibody concentration was determined by extinction coefficient: absorbance at 280 nm of 1.4 equals 1.0 mg of IgG.</p> <p>The Life Science industry has been in the grips of a reproducibility crisis for a number of years. Abcam is leading the way in addressing this with our range of recombinant monoclonal antibodies and knockout edited cell lines for gold-standard validation. Please check that this product meets your needs before purchasing.</p> <p>If you have any questions, special requirements or concerns, please send us an inquiry and/or contact our Support team ahead of purchase. Recommended alternatives for this product can be found below, along with publications, customer reviews and Q&amp;As</p>

### 性能

---

<b>形式</b>	Liquid
<b>存放说明</b>	Shipped at 4°C. Upon delivery aliquot and store at -20°C. Avoid freeze / thaw cycles.
<b>存储溶液</b>	pH: 7 Preservative: 0.09% Sodium azide Constituent: Tris citrate/phosphate
<b>纯度</b>	Immunogen affinity purified
<b>克隆</b>	多克隆
<b>同种型</b>	IgG

### 应用

---

## The Abpromise guarantee

**Abpromise™** 承诺保证使用 ab100914 于以下的经测试应用

“应用说明”部分 下显示的仅为推荐的起始稀释度;实际最佳的稀释度/浓度应由使用者检定。

应用	Ab评论	说明
WB		1/2000 - 1/10000. Predicted molecular weight: 209 kDa.
IP		Use at 5-15 µg/mg of lysate.

## 靶标

### 功能

Microtubule-associated factor involved in the late phase of epithelial polarization and microtubule dynamics regulation. Plays a role in the development and maintenance of non-centrosomal microtubule bundles at the lateral membrane in polarized epithelial cells.

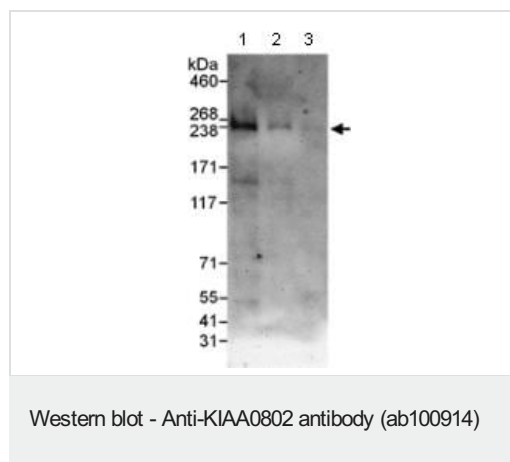
### 序列相似性

Belongs to the SOGA family.

### 细胞定位

Lateral cell membrane. Apical cell membrane. Cytoplasm, cytoskeleton, spindle pole. Midbody. Cytoplasm, cytoskeleton. Colocalized with microtubules at the base of cilia. Gradually accumulates on the apicobasal microtubule bundles during epithelial cell polarization (By similarity). Colocalized with the apicobasal microtubule bundles running beneath the lateral membrane. Colocalized with microtubule bundles in the spindle pole in mitotic cells and in the midbodies at the end of cytokinesis.

## 图片



**All lanes :** Anti-KIAA0802 antibody (ab100914) at 1 µg/ml

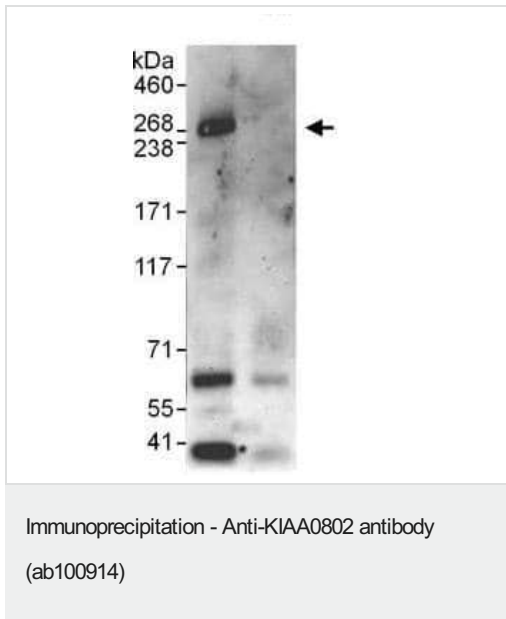
**Lane 1 :** HeLa Whole Cell Lysate at 50 µg

**Lane 2 :** HeLa Whole Cell Lysate at 15 µg

**Lane 3 :** HeLa Whole Cell Lysate at 5 µg

**Predicted band size:** 209 kDa

**Exposure time:** 3 minutes



ab100914 at 1 µg/ml staining KIAA0802 in HeLa cell lysate  
immunoprecipitated using ab100914 at 10 µg/mg lysate (1 mg/IP;  
20% of IP loaded/lane). Exposure time: 3 minutes

**Please note:** All products are "FOR RESEARCH USE ONLY. NOT FOR USE IN DIAGNOSTIC PROCEDURES"

### Our Abpromise to you: Quality guaranteed and expert technical support

---

- Replacement or refund for products not performing as stated on the datasheet
- Valid for 12 months from date of delivery
- Response to your inquiry within 24 hours
- We provide support in Chinese, English, French, German, Japanese and Spanish
- Extensive multi-media technical resources to help you
- We investigate all quality concerns to ensure our products perform to the highest standards

If the product does not perform as described on this datasheet, we will offer a refund or replacement. For full details of the Abpromise, please visit <https://www.abcam.cn/abpromise> or contact our technical team.

### Terms and conditions

---

- Guarantee only valid for products bought direct from Abcam or one of our authorized distributors