

# Anti-KIAA0101 antibody ab226255

**6 References**   **2 图像**

### 概述

产品名称	Anti-KIAA0101抗体
描述	兔多克隆抗体to KIAA0101
宿主	Rabbit
经测试应用	适用于: IP, IHC-P
种属反应性	与反应: Human
免疫原	Synthetic peptide within Human KIAA0101 aa 1-50. The exact sequence is proprietary. (NP_055551.1). Database link: <a href="#">Q15004</a>
阳性对照	IP: HeLa whole cell lysate ( <a href="#">ab150035</a> ). IHC-P: Human prostate carcinoma tissue.
常规说明	<p>The Life Science industry has been in the grips of a reproducibility crisis for a number of years. Abcam is leading the way in addressing this with our range of recombinant monoclonal antibodies and knockout edited cell lines for gold-standard validation. Please check that this product meets your needs before purchasing.</p> <p>If you have any questions, special requirements or concerns, please send us an inquiry and/or contact our Support team ahead of purchase. Recommended alternatives for this product can be found below, along with publications, customer reviews and Q&amp;As</p>

### 性能

形式	Liquid
存放说明	Shipped at 4°C. Store at +4°C short term (1-2 weeks). Upon delivery aliquot. Store at -20°C long term. Avoid freeze / thaw cycle.
存储溶液	pH: 7 Preservative: 0.09% Sodium azide Constituent: Tris citrate/phosphate
纯度	pH 7 to 8 Immunogen affinity purified
纯化说明	ab226255 was affinity purified using an epitope specific to PAF immobilized on solid support.
克隆	多克隆
同种型	IgG

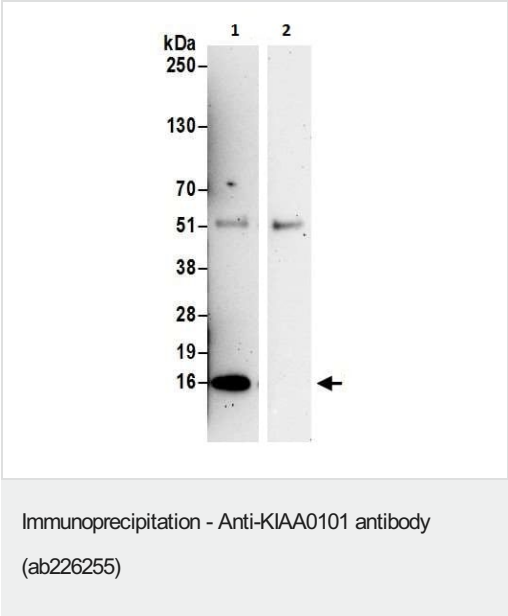
应用

<b>The Abpromise guarantee</b> <b>Abpromise™</b> 承诺保证使用ab226255于以下的经测试应用		
“应用说明”部分 下显示的仅为推荐的起始稀释度;实际最佳的稀释度/浓度应由使用者检定。		
应用	Ab评论	说明
IP		Use at 2-10 µg/mg of lysate.
IHC-P		1/500 - 1/1000. Perform heat mediated antigen retrieval with citrate buffer pH 6 before commencing with IHC staining protocol.

靶标

功能	May be involved in protection of cells from UV-induced cell death.
组织特异性	Expressed predominantly in liver, pancreas and placenta. Not detected in heart or brain. Highly expressed in a number of tumors, especially esophageal tumors, in anaplastic thyroid carcinomas and in non-small-cell lung cancer lines.
细胞定位	Nucleus. Mitochondrion.

图片

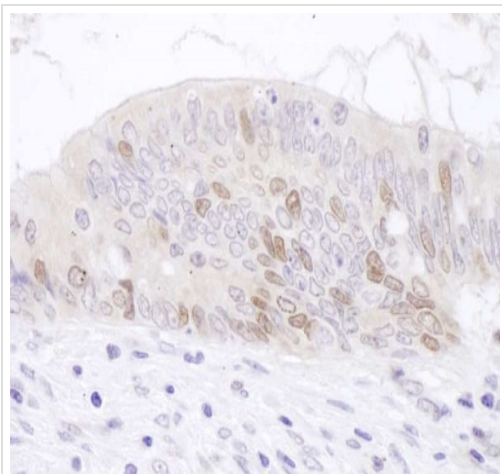


KIAA0101 was immunoprecipitated from HeLa (human epithelial cell line from cervix adenocarcinoma) whole cell lysate (prepared using RIPA buffer; 1 mg for IP, 20% of IP loaded) with ab226255 at 6 µg/mg lysate. Western blot was performed from the immunoprecipitate using ab226255 at 1 µg/ml.

Lane 1: ab226255 IP in HeLa whole cell lysate.

Lane 2: Control IgG IP in HeLa whole cell lysate.

Detection: Chemiluminescence with exposure time of 3 minutes.



Formalin-fixed, paraffin-embedded human prostate carcinoma tissue stained for KIAA0101 using ab226255 at 1/1000 dilution in immunohistochemical analysis.

Detection: DAB staining. Counterstain: Hematoxylin (blue).

Immunohistochemistry (Formalin/PFA-fixed paraffin-embedded sections) - Anti-KIAA0101 antibody (ab226255)

**Please note:** All products are "FOR RESEARCH USE ONLY. NOT FOR USE IN DIAGNOSTIC PROCEDURES"

### Our Abpromise to you: Quality guaranteed and expert technical support

---

- Replacement or refund for products not performing as stated on the datasheet
- Valid for 12 months from date of delivery
- Response to your inquiry within 24 hours
- We provide support in Chinese, English, French, German, Japanese and Spanish
- Extensive multi-media technical resources to help you
- We investigate all quality concerns to ensure our products perform to the highest standards

If the product does not perform as described on this datasheet, we will offer a refund or replacement. For full details of the Abpromise, please visit <https://www.abcam.cn/abpromise> or contact our technical team.

### Terms and conditions

---

- Guarantee only valid for products bought direct from Abcam or one of our authorized distributors