


Anti-KHSRP antibody [EPR9865] ab140648

重组 RabMAb

★★★★☆ 4 Abreviews 4 References 10 图像

概述

产品名称	Anti-KHSRP抗体[EPR9865]
描述	兔单克隆抗体[EPR9865] to KHSRP
宿主	Rabbit
经测试应用	适用于: Flow Cyt (Intra), WB, IHC-P
种属反应性	与反应: Human 预测可用于: Mouse, Rat 
免疫原	Synthetic peptide within Human KHSRP aa 500-600. The exact sequence is proprietary.
阳性对照	293T, HeLa, Jurkat and A673 cell lysates. Human brain and Human colon tissue.
常规说明	<p>This product is a recombinant monoclonal antibody, which offers several advantages including:</p> <ul style="list-style-type: none">- High batch-to-batch consistency and reproducibility- Improved sensitivity and specificity- Long-term security of supply- Animal-free production <p>For more information see here.</p> <p>Our RabMAb[®] technology is a patented hybridoma-based technology for making rabbit monoclonal antibodies. For details on our patents, please refer to RabMAb[®] patents.</p>

性能

形式	Liquid
存放说明	Shipped at 4°C. Upon delivery aliquot and store at -20°C. Avoid repeated freeze / thaw cycles.
存储溶液	pH: 7.2 Preservative: 0.01% Sodium azide Constituents: 9% PBS, 40% Glycerol (glycerin, glycerine), 0.05% BSA, 50% Tissue culture supernatant
纯度	Protein A purified
克隆	单克隆
克隆编号	EPR9865
同种型	IgG

应用

The Abpromise guarantee **Abpromise™**承诺保证使用ab140648于以下的经测试应用

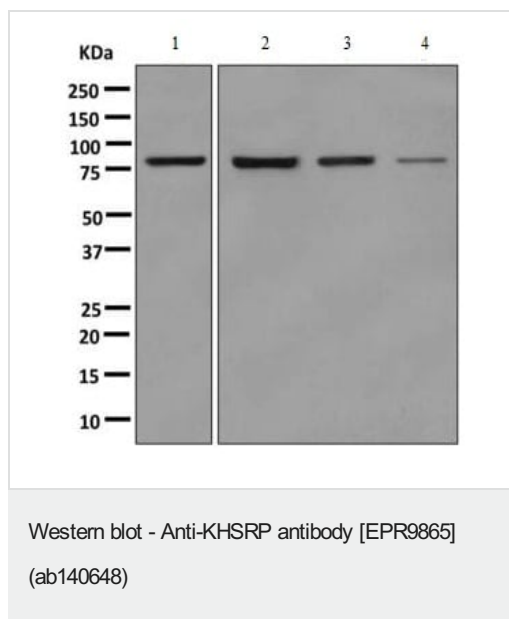
“应用说明”部分 下显示的仅为推荐的起始稀释度;实际最佳的稀释度/浓度应由使用者检定。

应用	Ab评论	说明
Flow Cyt (Intra)		1/100 - 1/1000. ab172730 - Rabbit monoclonal IgG, is suitable for use as an isotype control with this antibody.
WB	★★★★★ (1)	1/1000 - 1/10000. Predicted molecular weight: 73 kDa.
IHC-P		1/100 - 1/250. Perform heat mediated antigen retrieval before commencing with IHC staining protocol.

靶标

功能	Binds to the dendritic targeting element and may play a role in mRNA trafficking (By similarity). Part of a ternary complex that binds to the downstream control sequence (DCS) of the pre-mRNA. Mediates exon inclusion in transcripts that are subject to tissue-specific alternative splicing. May interact with single-stranded DNA from the far-upstream element (FUSE). May activate gene expression. Also involved in degradation of inherently unstable mRNAs that contain AU-rich elements (AREs) in their 3'-UTR, possibly by recruiting degradation machinery to ARE-containing mRNAs.
组织特异性	Detected in neural and non-neural cell lines.
序列相似性	Belongs to the KHSRP family. Contains 4 KH domains.
翻译后修饰	Phosphorylated upon DNA damage, probably by ATM or ATR.
细胞定位	Nucleus. Cytoplasm. A small proportion is also found in the cytoplasm of neuronal cell bodies and dendrites.

图片



All lanes : Anti-KHSRP antibody [EPR9865] (ab140648) at 1/1000 dilution

Lane 1 : 293T cell lysate

Lane 2 : HeLa cell lysate

Lane 3 : Jurkat cell lysate

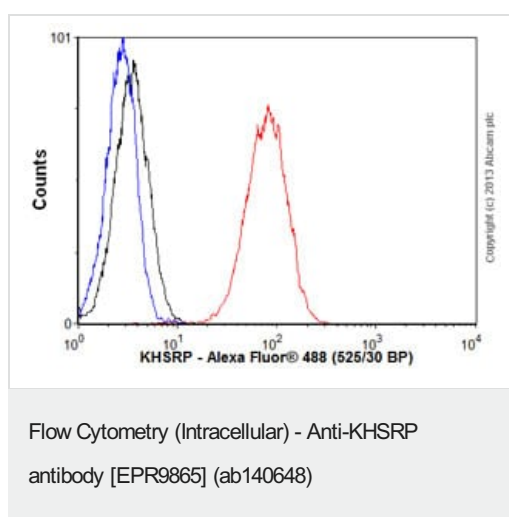
Lane 4 : A673 cell lysate

Lysates/proteins at 10 µg per lane.

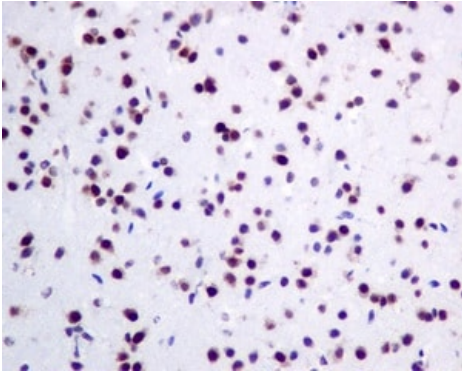
Secondary

All lanes : HRP conjugated goat anti-rabbit at 1/2000 dilution

Predicted band size: 73 kDa



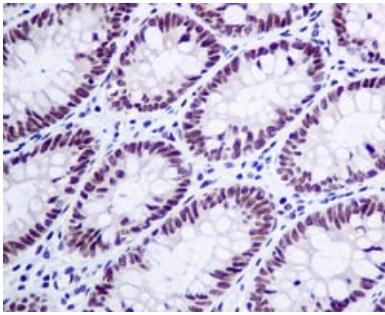
Overlay histogram showing HeLa cells stained with ab140648 (red line). The cells were fixed with 80% methanol (5 min) and then permeabilized with 0.1% PBS-Tween for 20 min. The cells were then incubated in 1x PBS / 10% normal goat serum / 0.3M glycine to block non-specific protein-protein interactions followed by the antibody (ab140648, 1/1000 dilution) for 30 min at 22°C. The secondary antibody used was Alexa Fluor® 488 goat anti-rabbit IgG (H&L) ([ab150077](#)) at 1/2000 dilution for 30 min at 22°C. Isotype control antibody (black line) was rabbit IgG (monoclonal) (0.1µg/1x10⁶ cells) used under the same conditions. Unlabelled sample (blue line) was also used as a control. Acquisition of >5,000 events were collected using a 20mW Argon ion laser (488nm) and 525/30 bandpass filter. This antibody gave a positive signal in HeLa cells fixed with 4% paraformaldehyde (10 min)/permeabilized with 0.1% PBS-Tween for 20 min used under the same conditions.



Immunohistochemistry (Formalin/PFA-fixed paraffin-embedded sections) - Anti-KHSRP antibody [EPR9865] (ab140648)

Immunohistochemical analysis of paraffin embedded Human brain tissue labelling KHSRP with ab140648 at a 1/100 dilution.

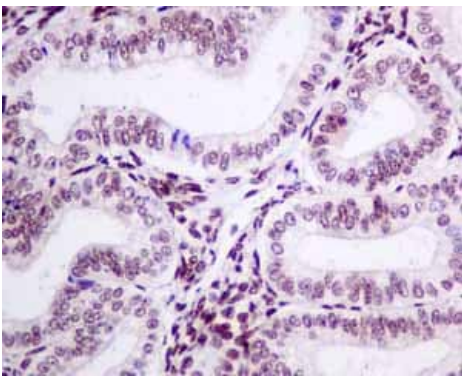
Perform heat mediated antigen retrieval before commencing with IHC staining protocol.



Immunohistochemistry (Formalin/PFA-fixed paraffin-embedded sections) - Anti-KHSRP antibody [EPR9865] (ab140648)

Immunohistochemical analysis of paraffin embedded Human colon tissue labelling KHSRP with ab140648 at a 1/100 dilution.

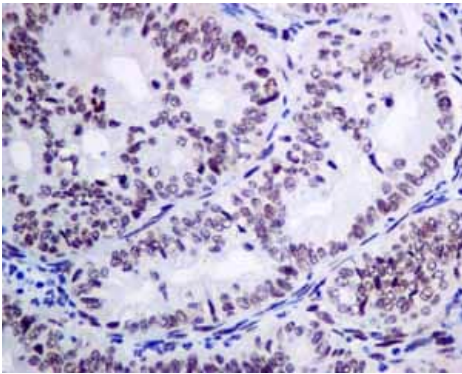
Perform heat mediated antigen retrieval before commencing with IHC staining protocol.



Immunohistochemistry (Formalin/PFA-fixed paraffin-embedded sections) - Anti-KHSRP antibody [EPR9865] (ab140648)

Immunohistochemical analysis of paraffin embedded Normal Human Uterus tissue using ab140648 showing +ve staining.

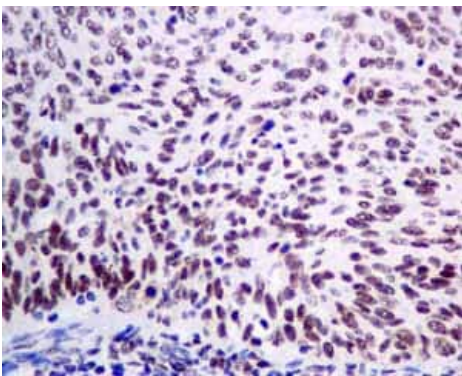
Perform heat mediated antigen retrieval before commencing with IHC staining protocol.



Immunohistochemistry (Formalin/PFA-fixed paraffin-embedded sections) - Anti-KHSRP antibody
[EPR9865] (ab140648)

Immunohistochemical analysis of paraffin embedded Human Ovarian carcinoma tissue using ab140648 showing +ve staining.

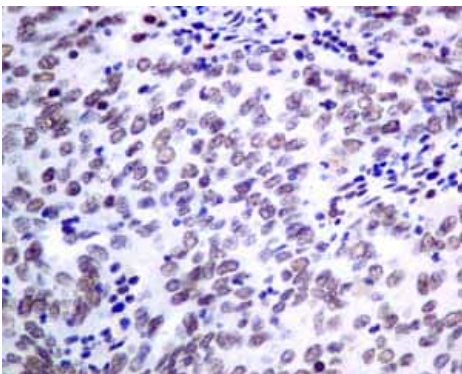
Perform heat mediated antigen retrieval before commencing with IHC staining protocol.



Immunohistochemistry (Formalin/PFA-fixed paraffin-embedded sections) - Anti-KHSRP antibody
[EPR9865] (ab140648)

Immunohistochemical analysis of paraffin embedded Human Cervical carcinoma tissue using ab140648 showing +ve staining.

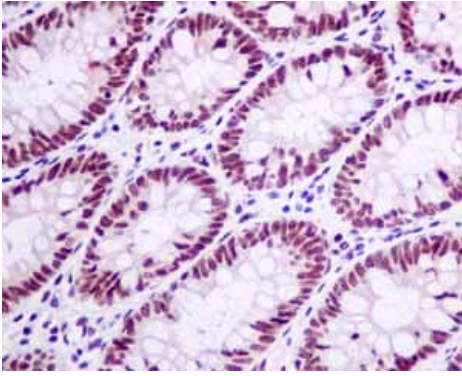
Perform heat mediated antigen retrieval before commencing with IHC staining protocol.



Immunohistochemistry (Formalin/PFA-fixed paraffin-embedded sections) - Anti-KHSRP antibody
[EPR9865] (ab140648)

Immunohistochemical analysis of paraffin embedded Human Endometrial carcinoma tissue using ab140648 showing +ve staining.

Perform heat mediated antigen retrieval before commencing with IHC staining protocol.



Immunohistochemical analysis of paraffin embedded Normal Human Colon tissue using ab140648 showing +ve staining.

Perform heat mediated antigen retrieval before commencing with IHC staining protocol.

Immunohistochemistry (Formalin/PFA-fixed paraffin-embedded sections) - Anti-KHSRP antibody [EPR9865] (ab140648)

Why choose a recombinant antibody?



Anti-KHSRP antibody [EPR9865] (ab140648)

Please note: All products are "FOR RESEARCH USE ONLY. NOT FOR USE IN DIAGNOSTIC PROCEDURES"

Our Abpromise to you: Quality guaranteed and expert technical support

- Replacement or refund for products not performing as stated on the datasheet
- Valid for 12 months from date of delivery
- Response to your inquiry within 24 hours
- We provide support in Chinese, English, French, German, Japanese and Spanish
- Extensive multi-media technical resources to help you
- We investigate all quality concerns to ensure our products perform to the highest standards

If the product does not perform as described on this datasheet, we will offer a refund or replacement. For full details of the Abpromise, please visit <https://www.abcam.cn/abpromise> or contact our technical team.

Terms and conditions

- Guarantee only valid for products bought direct from Abcam or one of our authorized distributors