


### Anti-KDS antibody ab70297

★★★★★ [2 Abreviews](#) [2 References](#) [2 图像](#)

#### 概述

产品名称	Anti-KDS抗体
描述	兔多克隆抗体to KDS
宿主	Rabbit
经测试应用	适用于: WB, IP
种属反应性	与反应: Mouse, Human 预测可用于: Rat, Rabbit, Horse, Guinea pig, Cow, Dog, Pig, Xenopus laevis, Rhesus monkey, Gorilla, Chinese hamster, Orangutan, Elephant 
免疫原	Synthetic peptide corresponding to Human KDS (C terminal). Database link: <a href="#">Q9H2K8</a>
阳性对照	WB: HeLa, NIH/3T3 whole cell lysates. IP: HeLa lysate
常规说明	<p>The Life Science industry has been in the grips of a reproducibility crisis for a number of years. Abcam is leading the way in addressing this with our range of recombinant monoclonal antibodies and knockout edited cell lines for gold-standard validation. Please check that this product meets your needs before purchasing.</p> <p>If you have any questions, special requirements or concerns, please send us an inquiry and/or contact our Support team ahead of purchase. Recommended alternatives for this product can be found below, along with publications, customer reviews and Q&amp;As</p>

#### 性能

形式	Liquid
存放说明	Shipped at 4°C. Upon delivery aliquot and store at -20°C. Avoid freeze / thaw cycles.
存储溶液	pH: 7 Preservative: 0.09% Sodium azide Constituents: 1.815% Tris, 1.764% Sodium citrate, 0.021% PBS
纯度	Immunogen affinity purified
纯化说明	ab70297 was affinity purified using an epitope specific to JIK immobilized on solid support.
克隆	多克隆
同种型	IgG

## 应用

**The Abpromise guarantee**      **Abpromise™** 承诺保证使用 ab70297 于以下的经测试应用

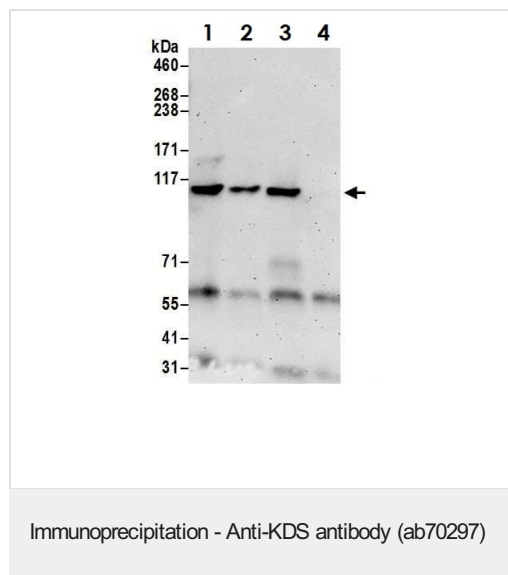
“应用说明”部分 下显示的仅为推荐的起始稀释度;实际最佳的稀释度/浓度应由使用者检定。

应用	Ab评论	说明
WB	★★★★☆ (2)	1/2000 - 1/10000. Detects a band of approximately 120 kDa (predicted molecular weight: 105 kDa).
IP		Use at 2-10 µg/mg of lysate.

## 靶标

<b>功能</b>	Inhibits the basal activity of Jun kinase. Negatively regulated by epidermal growth factor (EGF). When overexpressed, may activate ERK1/ERK2 and JNK/SAPK.
<b>组织特异性</b>	Ubiquitously expressed at a low level, and highly expressed in peripheral blood leukocytes (PBLs), thymus, spleen, kidney, skeletal muscle, heart and liver.
<b>序列相似性</b>	Belongs to the protein kinase superfamily. STE Ser/Thr protein kinase family. STE20 subfamily. Contains 1 protein kinase domain.
<b>翻译后修饰</b>	Autophosphorylated. Phosphorylated upon DNA damage, probably by ATM or ATR.
<b>细胞定位</b>	Cytoplasm. Cell membrane. Also localized to the peripheral cell membrane.

## 图片



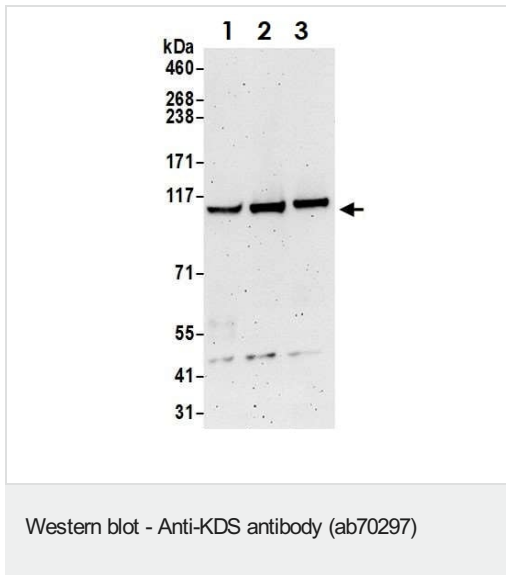
Immunoprecipitation of HeLa whole cell lysate using ab70297.

Lane 1: ab70297 current lot

Lane 2: ab70297 previous lot

Lane 3: other rabbit anti-KDS antibody

Lane 4: Control IgG



**All lanes :** Anti-KDS antibody (ab70297) at 0.1 µg/ml

**Lane 1 :** HeLa whole cell lysate

**Lane 2 :** HEK293T whole cell lysate

**Lane 3 :** NIH/3T3 whole cell lysate

Lysates/proteins at 50 µg per lane.

**Predicted band size:** 105 kDa

**Please note:** All products are "FOR RESEARCH USE ONLY. NOT FOR USE IN DIAGNOSTIC PROCEDURES"

### Our Abpromise to you: Quality guaranteed and expert technical support

- Replacement or refund for products not performing as stated on the datasheet
- Valid for 12 months from date of delivery
- Response to your inquiry within 24 hours
- We provide support in Chinese, English, French, German, Japanese and Spanish
- Extensive multi-media technical resources to help you
- We investigate all quality concerns to ensure our products perform to the highest standards

If the product does not perform as described on this datasheet, we will offer a refund or replacement. For full details of the Abpromise, please visit <https://www.abcam.cn/abpromise> or contact our technical team.

### Terms and conditions

- Guarantee only valid for products bought direct from Abcam or one of our authorized distributors