



### Anti-KDM5A / Jarid1A / RBBP2 antibody [18E8] ab78322

敲除 验证

**10 References** [4 图像](#)

#### 概述

|       |   |
|-------|---|
| 产品名称  | Anti-KDM5A / Jarid1A / RBBP2抗体[18E8]  |
| 描述    | 小鼠单克隆抗体[18E8] to KDM5A / Jarid1A / RBBP2  |
| 宿主    | Mouse   |
| 经测试应用 | 适用于: Flow Cyt (Intra), ICC/IF, WB   |
| 种属反应性 | 与反应: Mouse, Human   |
| 免疫原   | Synthetic peptide corresponding to Human KDM5A/ Jarid1A/ RBBP2 aa 1416-1434.<br>Sequence:<br>PRKQPRKSPLVPRSLEPPV<br><br>Database link: <a href="#">P29375</a>  <a href="#">Run BLAST with</a>  <a href="#">Run BLAST with</a>   |
| 阳性对照  | HeLa siRNA. HeLa RBP2 siRNA. Extracts from MCF7 cells, U2OS cells, NIH3T3 cells and J1 (mouse ES) cells. HeLa cells : Flow Cyt (Intra).   |
| 常规说明  | Histone demethylase that specifically demethylates 'Lys-4' of histone H3, thereby playing a central role in histone code.<br><br>The Life Science industry has been in the grips of a reproducibility crisis for a number of years. Abcam is leading the way in addressing this with our range of recombinant monoclonal antibodies and knockout edited cell lines for gold-standard validation. Please check that this product meets your needs before purchasing.<br><br>If you have any questions, special requirements or concerns, please send us an inquiry and/or contact our Support team ahead of purchase. Recommended alternatives for this product can be found below, along with publications, customer reviews and Q&As |
| 性能    |   |
| 形式    | Liquid  |
| 存放说明  | Shipped at 4°C. Upon delivery aliquot and store at -20°C. Avoid freeze / thaw cycles.   |
| 存储溶液  | pH: 6<br>Constituents: 50% Glycerol, PBS  |

|      |                             |
|------|-----------------------------|
| 纯度   | Ion Exchange Chromatography |
| 克隆   | 单克隆                         |
| 克隆编号 | 18E8                        |
| 同种型  | IgG2a                       |
| 轻链类型 | kappa                       |

## 应用

**The Abpromise guarantee**      **Abpromise™**承诺保证使用ab78322于以下的经测试应用

“应用说明”部分 下显示的仅为推荐的起始稀释度;实际最佳的稀释度/浓度应由使用者检定。

| 应用                      | Ab评论 | 说明   |
|-------------------------|------|--|
| <b>Flow Cyt (Intra)</b> |      | Use 1 µg for 10 <sup>6</sup> cells.<br><b>ab170191</b> - Mouse monoclonal IgG2a, is suitable for use as an isotype control with this antibody. |
| <b>ICC/IF</b>           |      | Use a concentration of 1 - 10 µg/ml.   |
| <b>WB</b>               |      | Use a concentration of 1 µg/ml. Predicted molecular weight: 196 kDa.   |

## 靶标

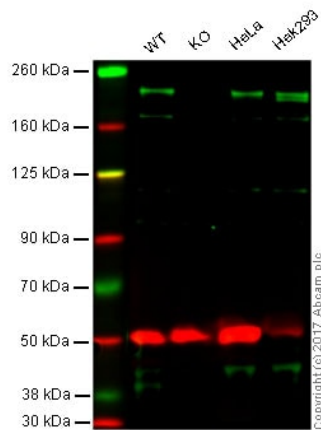
**功能**      Histone demethylase that specifically demethylates 'Lys-4' of histone H3, thereby playing a central role in histone code. Does not demethylate histone H3 'Lys-9', H3 'Lys-27', H3 'Lys-36', H3 'Lys-79' or H4 'Lys-20'. Demethylates trimethylated and dimethylated but not monomethylated H3 'Lys-4'. May stimulate transcription mediated by nuclear receptors. May be involved in transcriptional regulation of Hox proteins during cell differentiation. May participate in transcriptional repression of cytokines such as CXCL12.

**序列相似性**      Belongs to the JARID1 histone demethylase family.  
Contains 1 ARID domain.  
Contains 1 JmjC domain.  
Contains 1 JmjN domain.  
Contains 3 PHD-type zinc fingers.

**结构域**      The GSGFP motif is required for the interaction with SUZ12.

**细胞定位**      Nucleus > nucleolus. Occupies promoters of genes involved in RNA metabolism and mitochondrial function.

## 图片



Western blot - Anti-KDM5A / Jarid1A / RBBP2 antibody [18E8] (ab78322)

**Lane 1:** Wild-type HAP1 whole cell lysate (20 µg)

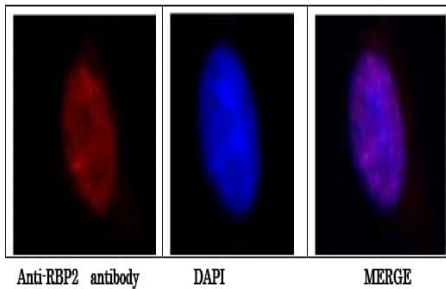
**Lane 2:** KDM5A knockout HAP1 whole cell lysate (20 µg)

**Lane 3:** HeLa whole cell lysate (20 µg)

**Lane 4:** HEK293 whole cell lysate (20 µg)

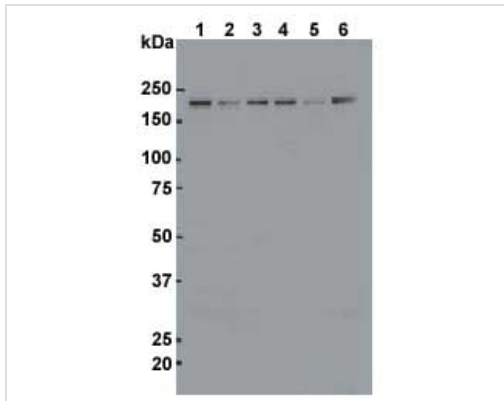
**Lanes 1 - 4:** Merged signal (red and green). Green - ab78322 observed at 240 kDa. Red - loading control, **ab176560**, observed at 50 kDa.

ab78322 was shown to specifically react with KDM5A in wild type HAP1 cells along with additional cross reactive bands. No bands were observed when KDM5A knockout samples were examined. Ab78322 and **ab176560** (Rabbit anti alpha Tubulin loading control) were incubated overnight at 4°C at 1 µg/ml and 1/10000 dilution respectively. Blots were developed with Goat anti-Rabbit IgG H&L (IRDye® 800CW) preabsorbed (**ab216773**) and Goat anti-Mouse IgG H&L (IRDye® 680RD) preabsorbed (**ab216776**) secondary antibodies at 1/20000 dilution for 1 hour at room temperature before imaging.



Immunocytochemistry/ Immunofluorescence - Anti-KDM5A / Jarid1A / RBBP2 antibody [18E8] (ab78322)

ab78322 staining KDM5A / Jarid1A / RBBP2 [18E8] in HeLa cell line by ICC/IF (Immunocytochemistry/immunofluorescence). Cells were fixed with 4 % paraformaldehyde, permeabilized with Triton X-100 0.25% in PBS and blocked with 1.5% BSA for 30 minutes. Samples were incubated with primary antibody (1/200 in PBS + 1% BSA) for overnight at 4°C. An Alexa Fluor®488-conjugated Goat anti-mouse IgG polyclonal (1/1000 in PBS + 1% BSA) was used as the secondary antibody and incubated for 1 hour at room temperature. DAPI was used to stain the nuclear DNA.



Western blot - Anti-KDM5A / Jarid1A / RBBP2 antibody [18E8] (ab78322)

**All lanes :** Anti-KDM5A / Jarid1A / RBBP2 antibody [18E8] (ab78322) at 1 µg/ml

**Lane 1 :** HeLa control siRNA

**Lane 2 :** HeLa RBBP2 siRNA

**Lane 3 :** Extracts from MCF7 cells

**Lane 4 :** Extracts from U2OS cells

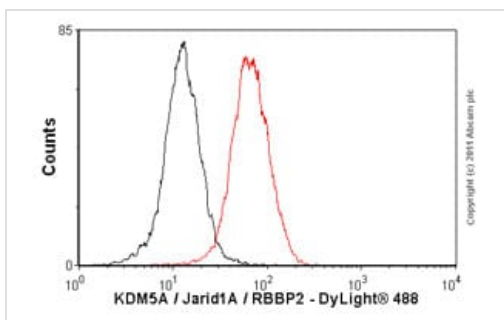
**Lane 5 :** Extracts from NIH3T3 cells

**Lane 6 :** Extracts from J1 (mouse ES) cells

Developed using the ECL technique.

**Predicted band size:** 196 kDa

**Observed band size:** 196 kDa



Flow Cytometry (Intracellular) - Anti-KDM5A / Jarid1A / RBBP2 antibody [18E8] (ab78322)

Overlay histogram showing HeLa cells stained with ab78322 (red line). The cells were fixed with 80% methanol (5 min) and then permeabilized with 0.1% PBS-Tween for 20 min. The cells were then incubated in 1x PBS / 10% normal goat serum / 0.3M glycine to block non-specific protein-protein interactions followed by the antibody (ab78322, 1µg/1x10<sup>6</sup> cells) for 30 min at 22°C. The secondary antibody used was DyLight® 488 goat anti-mouse IgG (H+L) ([ab96879](#)) at 1/500 dilution for 30 min at 22°C. Isotype control antibody (black line) was mouse IgG2a [ICIGG2A] ([ab91361](#), 1µg/1x10<sup>6</sup> cells) used under the same conditions. Acquisition of >5,000 events was performed.

**Please note:** All products are "FOR RESEARCH USE ONLY. NOT FOR USE IN DIAGNOSTIC PROCEDURES"

### Our Abpromise to you: Quality guaranteed and expert technical support

- Replacement or refund for products not performing as stated on the datasheet
- Valid for 12 months from date of delivery
- Response to your inquiry within 24 hours
- We provide support in Chinese, English, French, German, Japanese and Spanish

- Extensive multi-media technical resources to help you
- We investigate all quality concerns to ensure our products perform to the highest standards

If the product does not perform as described on this datasheet, we will offer a refund or replacement. For full details of the Abpromise, please visit <https://www.abcam.cn/abpromise> or contact our technical team.

### **Terms and conditions**

---

- Guarantee only valid for products bought direct from Abcam or one of our authorized distributors