

Anti-KCNT1/SLACK antibody [N3/26] ab94578

★★★★★ [1 Abreviews](#) [2 References](#) [3 图像](#)

概述

| | |
|--------------|---|
| 产品名称 | Anti-KCNT1/SLACK抗体[N3/26] |
| 描述 | 小鼠单克隆抗体[N3/26] to KCNT1/SLACK |
| 宿主 | Mouse |
| 特异性 | Detects ~140kDa. Weak human detection. Does not cross-react with KCNT2/Slo2.1/Slick. |
| 经测试应用 | 适用于: ICC/IF, IHC-Fr, Flow Cyt, WB, IHC-P |
| 种属反应性 | 与反应: Mouse, Rat, Human |
| 免疫原 | Recombinant fragment within Rat KCNT1/SLACK aa 1150 to the C-terminus. The exact immunogen sequence used to generate this antibody is proprietary information. If additional detail on the immunogen is needed to determine the suitability of the antibody for your needs, please contact our Scientific Support team to discuss your requirements. Database link: Q9Z258 |
| 阳性对照 | Flow Cyt: SH-SY5Y cells. WB: Rat brain lysate. |
| 常规说明 | The clone number has been updated from S3-26 to N3/26, both clone numbers name the same antibody clone. The Life Science industry has been in the grips of a reproducibility crisis for a number of years. Abcam is leading the way in addressing this with our range of recombinant monoclonal antibodies and knockout edited cell lines for gold-standard validation. Please check that this product meets your needs before purchasing. If you have any questions, special requirements or concerns, please send us an inquiry and/or contact our Support team ahead of purchase. Recommended alternatives for this product can be found below, along with publications, customer reviews and Q&As |

 [Run BLAST with](#)

 [Run BLAST with](#)

性能

| | |
|-------------|---|
| 形式 | Liquid |
| 存放说明 | Shipped at 4°C. Upon delivery aliquot and store at -20°C. Avoid freeze / thaw cycles. |
| 存储溶液 | Preservative: 0.09% Sodium azide Constituents: 50% Glycerol (glycerin, glycerine), PBS |
| 纯度 | Protein G purified |
| 克隆 | 单克隆 |

克隆编号 N3/26
同种型 IgG1

应用

The Abpromise guarantee **Abpromise™**承诺保证使用ab94578于以下的经测试应用

“应用说明”部分 下显示的仅为推荐的起始稀释度;实际最佳的稀释度/浓度应由使用者检定。

| 应用 | Ab评论 | 说明 |
|----------|-----------|--|
| ICC/IF | | Use at an assay dependent concentration. |
| IHC-Fr | | Use at an assay dependent concentration. |
| Flow Cyt | | Use 1µg for 10 ⁶ cells. ab170190 - Mouse monoclonal IgG1, is suitable for use as an isotype control with this antibody. |
| WB | ★★★★★ (1) | 1/1000. Predicted molecular weight: 137 kDa. |
| IHC-P | | 1/1000. |

靶标

功能 Outwardly rectifying potassium channel subunit that may co-assemble with other Slo-type channel subunits. Activated by high intracellular sodium or chloride levels. Activated upon stimulation of G-protein coupled receptors, such as CHRM1 and GRIA1. May be regulated by calcium in the absence of sodium ions (in vitro).

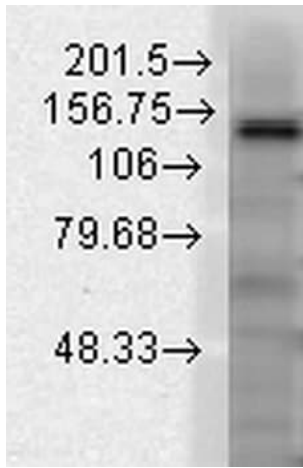
组织特异性 Highest expression in liver, brain and spinal cord. Lowest expression in skeletal muscle.

序列相似性 Belongs to the potassium channel family. Calcium-activated (TC 1.A.1.3) subfamily. KCa4.1/KCNT1 sub-subfamily.
Contains 1 RCK N-terminal domain.

翻译后修饰 Phosphorylated by protein kinase C. Phosphorylation of the C-terminal domain increases channel activity.

细胞定位 Cell membrane.

图片



Western blot - Anti-KCNT1/SLACK antibody [N3/26] (ab94578)

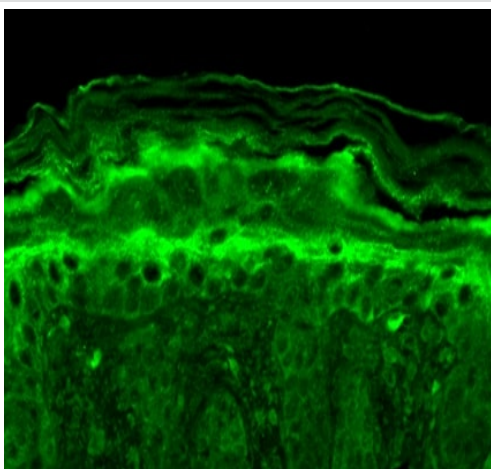
Anti-KCNT1/SLACK antibody [N3/26] (ab94578) at 1/1000 dilution
+ Rat brain lysate at 15 μ g

Secondary

HRP-conjugated sheet anti-mouse IgG

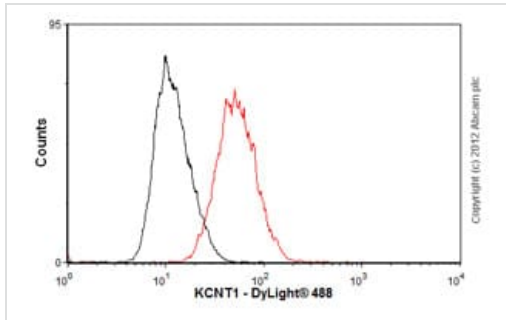
Predicted band size: 137 kDa

Membrane was blocked with 1.5% BSA for 30 minutes at room temperature. Primary antibody was incubated for 2 hours at room temperature.



Immunohistochemistry (Formalin/PFA-fixed paraffin-embedded sections) - Anti-KCNT1/SLACK antibody [N3/26] (ab94578)

Immunohistochemistry (Formalin/PFA-fixed paraffin-embedded sections) of mouse backskin staining KCNT1/SLACK with ab94578 at 1:100 for 1 hour at RT. Secondary Antibody: FITC Goat Anti-Mouse (green) at 1:50 for 1 hour at RT.



Flow Cytometry - Anti-KCNT1/SLACK antibody
[N3/26] (ab94578)

Overlay histogram showing SH-SY5Y cells stained with ab94578 (red line). The cells were fixed with 4% paraformaldehyde (10 min) and then permeabilized with 0.1% PBS-Tween for 20 min. The cells were then incubated in 1x PBS / 10% normal goat serum / 0.3M glycine to block non-specific protein-protein interactions followed by the antibody (ab94578, 1 µg/1x10⁶ cells) for 30 min at 22°C. The secondary antibody used was DyLight® 488 goat anti-mouse IgG (H+L) ([ab96879](#)) at 1/500 dilution for 30 min at 22°C. Isotype control antibody (black line) was mouse IgG1 [ICIGG1] ([ab91353](#), 2 µg/1x10⁶ cells) used under the same conditions. Acquisition of >5,000 events was performed.

Please note: All products are "FOR RESEARCH USE ONLY. NOT FOR USE IN DIAGNOSTIC PROCEDURES"

Our Abpromise to you: Quality guaranteed and expert technical support

- Replacement or refund for products not performing as stated on the datasheet
- Valid for 12 months from date of delivery
- Response to your inquiry within 24 hours
- We provide support in Chinese, English, French, German, Japanese and Spanish
- Extensive multi-media technical resources to help you
- We investigate all quality concerns to ensure our products perform to the highest standards

If the product does not perform as described on this datasheet, we will offer a refund or replacement. For full details of the Abpromise, please visit <https://www.abcam.cn/abpromise> or contact our technical team.

Terms and conditions

- Guarantee only valid for products bought direct from Abcam or one of our authorized distributors