

### Anti-KCNQ2 antibody ab22897

★★★★★ [5 Abreviews](#) [14 References](#) [3 图像](#)

#### 概述

产品名称	Anti-KCNQ2抗体
描述	兔多克隆抗体to KCNQ2
宿主	Rabbit
特异性	<p>NB: Rabbit polyclonal to KCNQ2 (ab22897) was used in reducing but not in denaturing conditions in WB (i.e. not heated or boiled).</p> <p>Replenishment batches of ab22897 are tested in WB. Previous batches were additionally validated in ICC/IF. This application is still expected to work and is covered by our Abpromise guarantee.</p>
经测试应用	适用于: WB, ICC/IF
种属反应性	与反应: Mouse, Rat, Human
免疫原	Synthetic peptide conjugated to KLH derived from within residues 850 to the C-terminus of Human KCNQ2. 参阅Abcam的专有抗源政策 (Peptide available as <a href="#">ab25449</a> .)
常规说明	<p>The Life Science industry has been in the grips of a reproducibility crisis for a number of years. Abcam is leading the way in addressing this with our range of recombinant monoclonal antibodies and knockout edited cell lines for gold-standard validation. Please check that this product meets your needs before purchasing.</p> <p>If you have any questions, special requirements or concerns, please send us an inquiry and/or contact our Support team ahead of purchase. Recommended alternatives for this product can be found below, along with publications, customer reviews and Q&amp;As</p>

#### 性能

形式	Liquid
存放说明	Shipped at 4°C. Store at +4°C short term (1-2 weeks). Upon delivery aliquot. Store at -20°C or -80°C. Avoid freeze / thaw cycle.
存储溶液	<p>pH: 7.40</p> <p>Preservative: 0.02% Sodium azide</p> <p>Constituent: PBS</p> <p>Batches of this product that have a concentration &lt; 1mg/ml may have BSA added as a stabilising agent. If you would like information about the formulation of a specific lot, please contact our scientific support team who will be happy to help.</p>

纯度	Immunogen affinity purified
克隆	多克隆
同种型	IgG

应用

The Abpromise guarantee      **Abpromise™**承诺保证使用ab22897于以下的经测试应用

“应用说明”部分 下显示的仅为推荐的起始稀释度 ;实际最佳的稀释度/浓度应由使用者检定。

应用	Ab评论	说明
WB	★★★★★ (3)	Use a concentration of 1 µg/ml. Detects a band of approximately 95 kDa (predicted molecular weight: 95 kDa). NB: Rabbit polyclonal to KCNQ2 (ab22897) was used in reducing but not in denaturing conditions in WB (i.e. not heated or boiled).
ICC/IF	★★★★★ (2)	Use at an assay dependent concentration.

靶标

功能	Probably important in the regulation of neuronal excitability. Associates with KCNQ3 to form a potassium channel with essentially identical properties to the channel underlying the native M-current, a slowly activating and deactivating potassium conductance which plays a critical role in determining the subthreshold electrical excitability of neurons as well as the responsiveness to synaptic inputs. KCNQ2/KCNQ3 current is blocked by linopirdine and XE991, and activated by the anticonvulsant retigabine. Muscarinic agonist oxotremorine-M strongly suppress KCNQ2/KCNQ3 current in cells in which cloned KCNQ2/KCNQ3 channels were coexpressed with M1 muscarinic receptors.
组织特异性	In adult and fetal brain. Highly expressed in areas containing neuronal cell bodies, low in spinal chord and corpus callosum. Isoform 2 is preferentially expressed in differentiated neurons. Isoform 6 is prominent in fetal brain, undifferentiated neuroblastoma cells and brain tumors.
疾病相关	Defects in KCNQ2 are the cause of benign familial neonatal seizures type 1 (BFNS1) [MIM:121200]. A disorder characterized by clusters of seizures occurring in the first days of life. Most patients have spontaneous remission by 12 months of age and show normal psychomotor development. Some rare cases manifest an atypical severe phenotype associated with epileptic encephalopathy and psychomotor retardation. The disorder is distinguished from benign familial infantile seizures by an earlier age at onset. In some patients, neonatal convulsions are followed later in life by myokymia, a benign condition characterized by spontaneous involuntary contractions of skeletal muscles fiber groups that can be observed as vermiform movement of the overlying skin. Electromyography typically shows continuous motor unit activity with spontaneous oligo- and multiplet-discharges of high intraburst frequency (myokymic discharges). Some patients may have isolated myokymia. Defects in KCNQ2 are the cause of epileptic encephalopathy early infantile type 7 (EIEE7) [MIM:613720]. EIEE7 is an autosomal dominant seizure disorder characterized by infantile onset of refractory seizures with resultant delayed neurologic development and persistent neurologic abnormalities.
序列相似性	Belongs to the potassium channel family. KQT (TC 1.A.1.15) subfamily. Kv7.2/KCNQ2 sub-

subfamily.

## 结构域

The segment S4 is probably the voltage-sensor and is characterized by a series of positively charged amino acids at every third position.

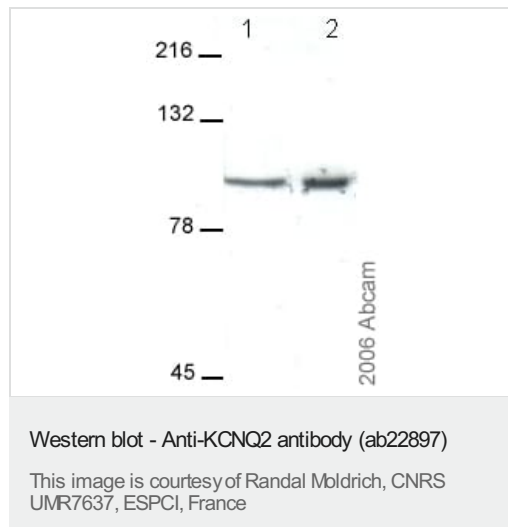
## 翻译后修饰

In *Xenopus* oocytes KCNQ2/KCNQ3 heteromeric current can be increased by intracellular cyclic AMP, an effect that depends on phosphorylation of Ser-52 in the N-terminus region.

## 细胞定位

Membrane.

## 图片



**All lanes :** Anti-KCNQ2 antibody (ab22897) at 1 µg/ml

**Lane 1 :** Rat whole brain lysate

**Lane 2 :** Mouse whole brain lysate

Lysates/proteins at 40 µg per lane.

### Secondary

**All lanes :** Anti-rabbit HRP at 1/20000 dilution

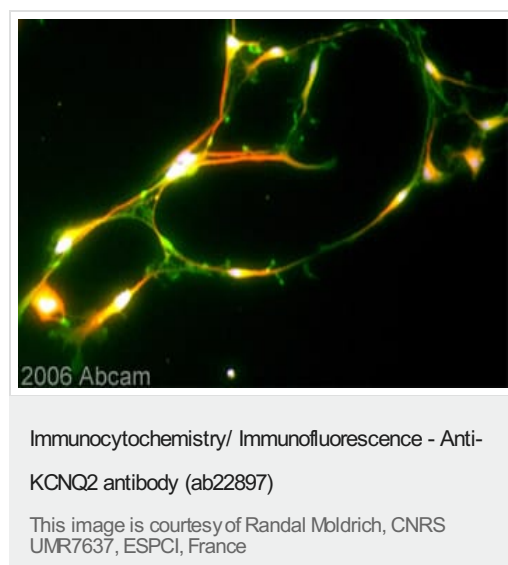
Developed using the ECL technique.

Performed under reducing conditions.

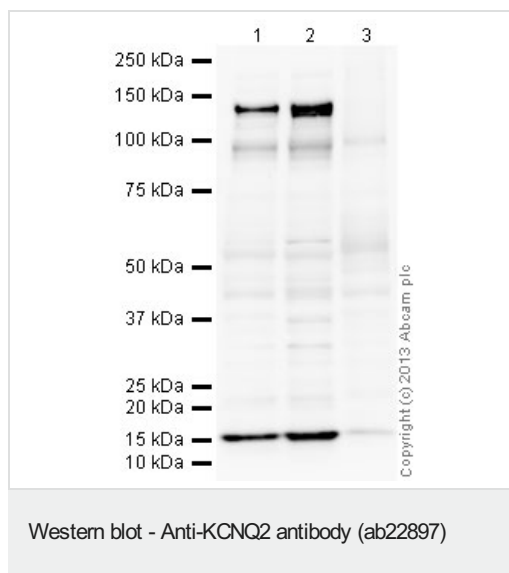
**Predicted band size:** 95 kDa

**Observed band size:** 95 kDa

Rabbit polyclonal to KCNQ2 (ab22897) was used in reducing conditions in WB but not in denaturing conditions (i.e. not heated).



Immunofluorescent detection of KCNQ2 (green colour) in differentiated murine neural precursors using Rabbit polyclonal to KCNQ2 (ab22897). KCNQ2 labeling is seen in the tips of neurite extensions (such as the cell in the top left corner), along axons, dendrites and possibly spines. ab22897 (3.5µg/ml) was incubated overnight at 4°C. Secondary antibody used is goat anti-rabbit Alexa fluor 488 (1h at RT ). The red colour is MAP2 detection (Secondary used is goat anti-mouse Alexa fluor 568; 1h at RT). NB: The white centres are caused by high intensity to-pro-3 blue nuclear counterstain cross-colouring with the red and background green.



**All lanes :** Anti-KCNQ2 antibody (ab22897) at 1 µg/ml

**Lane 1 :** Brain (Rat) Tissue Lysate

**Lane 2 :** Brain (Mouse) Tissue Lysate

**Lane 3 :** Brain (Human) Tissue Lysate - adult normal tissue

Lysates/proteins at 20 µg per lane.

### Secondary

**All lanes :** Goat Anti-Rabbit IgG H&L (HRP) ([ab97051](#)) at 1/10000 dilution

Developed using the ECL technique.

Performed under reducing conditions.

**Predicted band size:** 95 kDa

**Observed band size:** 95 kDa

**Additional bands at:** 140 kDa, 15 kDa. We are unsure as to the identity of these extra bands.

**Exposure time:** 20 minutes

This blot was produced using a 4-12% Bis-tris gel under the MOPS buffer system. The gel was run at 200V for 50 minutes before being transferred onto a Nitrocellulose membrane at 30V for 70 minutes. The membrane was then blocked for an hour using 5% Bovine Serum Albumin before being incubated with ab22897 overnight at 4°C. Antibody binding was detected using an anti-rabbit antibody conjugated to HRP, and visualised using ECL development solution.

Abcam recommends loading unheated lysates. Abcam welcomes customer feedback and would appreciate any comments regarding this product and the data presented above.

**Please note:** All products are "FOR RESEARCH USE ONLY. NOT FOR USE IN DIAGNOSTIC PROCEDURES"

### Our Abpromise to you: Quality guaranteed and expert technical support

- Replacement or refund for products not performing as stated on the datasheet

- Valid for 12 months from date of delivery
- Response to your inquiry within 24 hours
- We provide support in Chinese, English, French, German, Japanese and Spanish
- Extensive multi-media technical resources to help you
- We investigate all quality concerns to ensure our products perform to the highest standards

If the product does not perform as described on this datasheet, we will offer a refund or replacement. For full details of the Abpromise, please visit <https://www.abcam.cn/abpromise> or contact our technical team.

## **Terms and conditions**

---

- Guarantee only valid for products bought direct from Abcam or one of our authorized distributors