


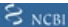


# Anti-KCNN2/SK2 antibody ab111939

**1 References**   **3 图像**

### 概述

产品名称	Anti-KCNN2/SK2抗体
描述	山羊多克隆抗体to KCNN2/SK2
宿主	Goat
经测试应用	适用于: WB, IHC-P
种属反应性	与反应: Human 预测可用于: Mouse, Rat, Cow, Dog 
免疫原	Synthetic peptide corresponding to Human KCNN2/SK2 aa 500-600 (internal sequence). (NP_067627.2)  <b>Run BLAST with</b>  <b>Run BLAST with</b> 
阳性对照	WB: Human liver lysate. IHC-P: Human kidney and thyroid tissue.
常规说明	<p>The Life Science industry has been in the grips of a reproducibility crisis for a number of years. Abcam is leading the way in addressing this with our range of recombinant monoclonal antibodies and knockout edited cell lines for gold-standard validation. Please check that this product meets your needs before purchasing.</p> <p>If you have any questions, special requirements or concerns, please send us an inquiry and/or contact our Support team ahead of purchase. Recommended alternatives for this product can be found below, along with publications, customer reviews and Q&amp;As</p>

### 性能

形式	Liquid
存放说明	Shipped at 4°C. Store at -20°C or -80°C. Avoid freeze / thaw cycle. Store undiluted.
存储溶液	pH: 7.30 Preservative: 0.02% Sodium azide Constituents: Tris buffered saline, 0.5% BSA
纯度	Immunogen affinity purified
克隆	多克隆
同种型	IgG

### 应用

The Abpromise guarantee

Abpromise™承诺保证使用ab111939于以下的经测试应用

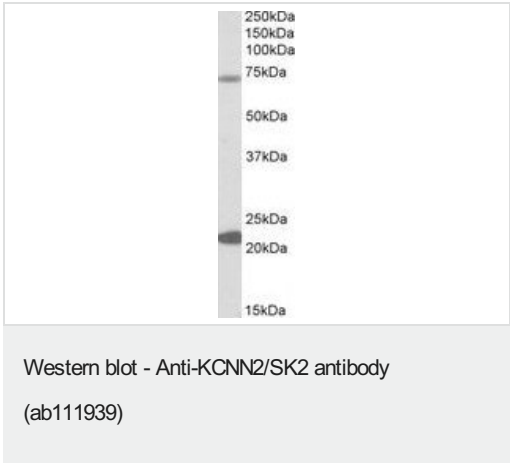
“应用说明”部分 下显示的仅为推荐的起始稀释度;实际最佳的稀释度/浓度应由使用者检定。

应用	Ab评论	说明
WB		Use a concentration of 0.3 - 1 µg/ml. Predicted molecular weight: 64 kDa.
IHC-P		Use a concentration of 3.75 µg/ml. Perform heat mediated antigen retrieval with citrate buffer pH 6 before commencing with IHC staining protocol.

靶标

功能	Forms a voltage-independent potassium channel activated by intracellular calcium. Activation is followed by membrane hyperpolarization. Thought to regulate neuronal excitability by contributing to the slow component of synaptic afterhyperpolarization. The channel is blocked by apamin.
组织特异性	Widely expressed.
序列相似性	Belongs to the potassium channel KCNN family. KCa2.2/KCNN2 subfamily.
细胞定位	Membrane.

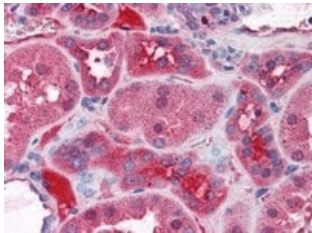
图片



Anti-KCNN2/SK2 antibody (ab111939) at 0.3 µg/ml + Human liver lysate in RIPA buffer at 35 µg

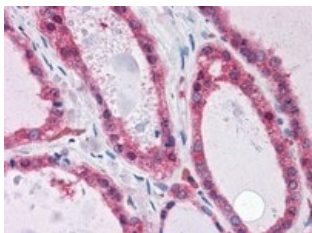
**Predicted band size:** 64 kDa

Primary incubation was 1 hour. Detected by chemiluminescence.



Immunohistochemistry (Formalin/PFA-fixed paraffin-embedded sections) - Anti-KCNN2/SK2 antibody (ab111939)

ab111939, at 3.75 µg/ml, staining KCNN2/SK2 in formalin fixed, paraffin embedded human kidney by Immunohistochemistry.



Immunohistochemistry (Formalin/PFA-fixed paraffin-embedded sections) - Anti-KCNN2/SK2 antibody (ab111939)

ab111939, at 3.75 µg/ml, staining KCNN2/SK2 in formalin fixed, paraffin embedded human thyroid by Immunohistochemistry.

**Please note:** All products are "FOR RESEARCH USE ONLY. NOT FOR USE IN DIAGNOSTIC PROCEDURES"

### Our Abpromise to you: Quality guaranteed and expert technical support

- Replacement or refund for products not performing as stated on the datasheet
- Valid for 12 months from date of delivery
- Response to your inquiry within 24 hours
- We provide support in Chinese, English, French, German, Japanese and Spanish
- Extensive multi-media technical resources to help you
- We investigate all quality concerns to ensure our products perform to the highest standards

If the product does not perform as described on this datasheet, we will offer a refund or replacement. For full details of the Abpromise, please visit <https://www.abcam.cn/abpromise> or contact our technical team.

### Terms and conditions

- Guarantee only valid for products bought direct from Abcam or one of our authorized distributors