


Anti-KAT5 / Tip60 antibody ab23886

★★★★★ [11 Abreviews](#) [25 References](#) [3 图像](#)

概述

| | |
|-------|---|
| 产品名称 | Anti-KAT5 / Tip60抗体 |
| 描述 | 兔多克隆抗体to KAT5 / Tip60 |
| 宿主 | Rabbit |
| 特异性 | ab23886 gives nuclear staining for Tip60 in interphase cells (see below), which is lost upon entry into mitosis (not shown). This signal can be successfully quenched using the immunizing peptide ab26349 . |
| 经测试应用 | 适用于: ICC/IF |
| 种属反应性 | 与反应: Human 预测可用于: Mouse, Rat, Drosophila melanogaster, Zebrafish  |
| 免疫原 | Synthetic peptide corresponding to Human KAT5/ Tip60 aa 450 to the C-terminus (C terminal) conjugated to keyhole limpet haemocyanin. Database link: Q92993 (Peptide available as ab26349) |
| 常规说明 | <p>The Life Science industry has been in the grips of a reproducibility crisis for a number of years. Abcam is leading the way in addressing this with our range of recombinant monoclonal antibodies and knockout edited cell lines for gold-standard validation. Please check that this product meets your needs before purchasing.</p> <p>If you have any questions, special requirements or concerns, please send us an inquiry and/or contact our Support team ahead of purchase. Recommended alternatives for this product can be found below, along with publications, customer reviews and Q&As</p> |

性能

| | |
|------|---|
| 形式 | Liquid |
| 存放说明 | Shipped at 4°C. Store at +4°C short term (1-2 weeks). Upon delivery aliquot. Store at -20°C or -80°C. Avoid freeze / thaw cycle. |
| 存储溶液 | pH: 7.40 Preservative: 0.02% Sodium azide Constituent: PBS |
| | Batches of this product that have a concentration < 1mg/ml may have BSA added as a stabilising agent. If you would like information about the formulation of a specific lot, please contact our |

| | |
|-----|--|
| | scientific support team who will be happy to help. |
| 纯度 | Immunogen affinity purified |
| 克隆 | 多克隆 |
| 同种型 | IgG |

应用

The Abpromise guarantee **Abpromise™**承诺保证使用ab23886于以下的经测试应用

“应用说明”部分 下显示的仅为推荐的起始稀释度 ;实际最佳的稀释度/浓度应由使用者检定。

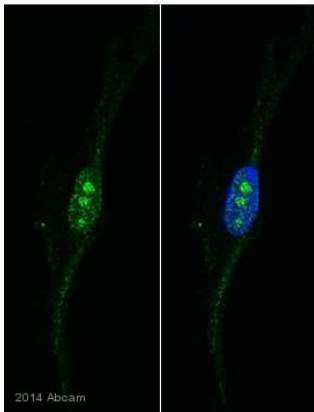
| 应用 | Ab评论 | 说明 |
|--------|-----------|---------------------------------|
| ICC/IF | ★★★★★ (2) | Use a concentration of 1 µg/ml. |

靶标

| | |
|-------|---|
| 功能 | Catalytic subunit of the NuA4 histone acetyltransferase complex which is involved in transcriptional activation of select genes principally by acetylation of nucleosomal histones H4 and H2A. This modification may both alter nucleosome-DNA interactions and promote interaction of the modified histones with other proteins which positively regulate transcription. This complex may be required for the activation of transcriptional programs associated with oncogene and proto-oncogene mediated growth induction, tumor suppressor mediated growth arrest and replicative senescence, apoptosis, and DNA repair. NuA4 may also play a direct role in DNA repair when recruited to sites of DNA damage. Directly acetylates and activates ATM. In case of HIV-1 infection, interaction with the viral Tat protein leads to KAT5 polyubiquitination and targets it to degradation. |
| 序列相似性 | Belongs to the MYST (SAS/MOZ) family. Contains 1 C2HC-type zinc finger. |
| 翻译后修饰 | Sumoylated by UBE2I at Lys-430 and Lys-451, leading to increase of its histone acetyltransferase activity in UV-induced DNA damage response, as well as its translocation to nuclear bodies. Phosphorylated on Ser-86 and Ser-90; enhanced during G2/M phase. Phosphorylated form has a higher activity. Ubiquitinated by MDM2, leading to its proteasome-dependent degradation. |
| 细胞定位 | Nucleus > nucleolus. Cytoplasm > perinuclear region. Upon stimulation with EDN1, it is exported from the nucleus to the perinuclear region and UV irradiation induces translocation into punctuate subnuclear structures named nuclear bodies. |

图片

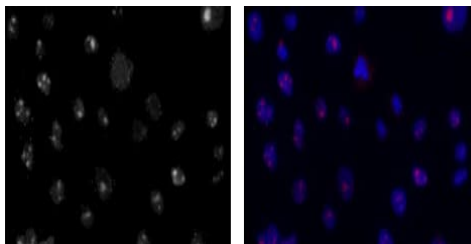
Tip60 DAPI + Merge



Immunocytochemistry/ Immunofluorescence - Anti-KAT5 / Tip60 antibody (ab23886)

This image is courtesy of an anonymous Abreview

ab23886 staining KAT5 / Tip60 in human primary fibroblasts by ICC/IF (Immunocytochemistry/immunofluorescence). Cells were fixed with paraformaldehyde, permeabilized with 0.2% Triton X-100 and blocked with 2% BSA for 1 hour at room temperature. Samples were incubated with primary antibody (1/500 in PBS + 2% BSA) for 2 hours. An Alexa Fluor® 488-conjugated goat anti-rabbit IgG polyclonal (1/500) was used as the secondary antibody.

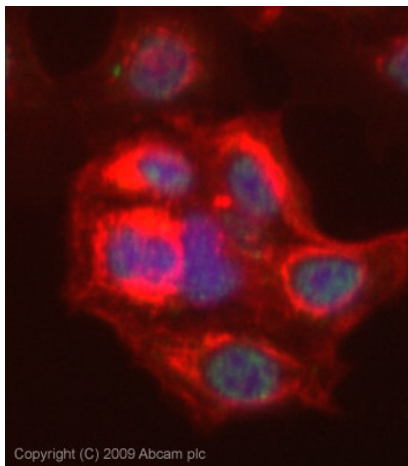


Immunocytochemistry/ Immunofluorescence - Anti-KAT5 / Tip60 antibody (ab23886)

This image is courtesy of Samantha Bennett and Bruno Amati, European Institute of Oncology

HeLa cells were plated on poly-D lysine coated cover slips, fixed with 4% w/v paraformaldehyde (10 min), permeabilised in 0.1% Triton X-100 in PBS (10 min), incubated for 1 hour at 37°C with ab23886 and stained with a FITC-conjugated secondary antibody and DAPI. Left panel: FITC signal. Right panel: FITC+DAPI.

ab23886 gives a specific nuclear staining for Tip60. Nucleoli are stained more intensely, as also demonstrated by co-staining with known nucleolar makers (not shown). The signal is blocked by pre-incubation of ab23886 with the cognate immunogenic peptide.



Copyright (C) 2009 Abcam plc

Immunocytochemistry/ Immunofluorescence - Anti-KAT5 / Tip60 antibody (ab23886)

ICC/IF image of ab23886 stained MCF7 cells. The cells were 100% methanol fixed (5 min) and then incubated in 1%BSA / 10% normal goat serum / 0.3M glycine in 0.1% PBS-Tween for 1h to permeabilise the cells and block non-specific protein-protein interactions. The cells were then incubated with the antibody (ab23886, 1µg/ml) overnight at +4°C. The secondary antibody (green) was Alexa Fluor® 488 goat anti-rabbit IgG (H+L) used at a 1/1000 dilution for 1h. Alexa Fluor® 594 WGA was used to label plasma membranes (red) at a 1/200 dilution for 1h. DAPI was used to stain the cell nuclei (blue) at a concentration of 1.43µM.

Please note: All products are "FOR RESEARCH USE ONLY. NOT FOR USE IN DIAGNOSTIC PROCEDURES"

Our Abpromise to you: Quality guaranteed and expert technical support

- Replacement or refund for products not performing as stated on the datasheet
- Valid for 12 months from date of delivery
- Response to your inquiry within 24 hours
- We provide support in Chinese, English, French, German, Japanese and Spanish
- Extensive multi-media technical resources to help you
- We investigate all quality concerns to ensure our products perform to the highest standards

If the product does not perform as described on this datasheet, we will offer a refund or replacement. For full details of the Abpromise, please visit <https://www.abcam.cn/abpromise> or contact our technical team.

Terms and conditions

- Guarantee only valid for products bought direct from Abcam or one of our authorized distributors