

Anti-Kappa light chain antibody [4G7] ab1936

★★★★★ [4 Abreviews](#) [2 References](#) [1 图像](#)

概述

产品名称	Anti-Kappa light chain抗体[4G7]
描述	小鼠单克隆抗体[4G7] to Kappa light chain
宿主	Mouse
特异性	Specific for independent constantly expressed epitope of kappa chain. Reacts with free and heavy chain-associated kappa chains.
经测试应用	适用于: IHC-P
种属反应性	与反应: Human
免疫原	Full length protein corresponding to Human Kappa light chain.
阳性对照	This antibody gave a positive result in IHC in the following FFPE tissue: Human normal tonsil.
常规说明	<p>Concentration varies from lot to lot and can be provided on request.</p> <p>This product was changed from ascites to tissue culture supernatant in March 2015. Lot numbers higher than GR145316-1 will be from tissue culture supernatant. Please note that the dilutions may need to be adjusted accordingly.</p> <p>The Life Science industry has been in the grips of a reproducibility crisis for a number of years. Abcam is leading the way in addressing this with our range of recombinant monoclonal antibodies and knockout edited cell lines for gold-standard validation. Please check that this product meets your needs before purchasing.</p> <p>If you have any questions, special requirements or concerns, please send us an inquiry and/or contact our Support team ahead of purchase. Recommended alternatives for this product can be found below, along with publications, customer reviews and Q&As</p>

性能

形式	Liquid
存放说明	Shipped at 4°C. Upon delivery aliquot and store at -20°C. Avoid freeze / thaw cycles.
存储溶液	<p>pH: 7.40</p> <p>Preservative: 0.1% Sodium azide</p> <p>Constituent: PBS</p>
纯度	Protein A purified
克隆	单克隆

克隆编号	4G7
骨髓瘤	Sp2/0
同种型	IgG2a

应用

The Abpromise guarantee **Abpromise™**承诺保证使用ab1936于以下的经测试应用

“应用说明”部分 下显示的仅为推荐的起始稀释度;实际最佳的稀释度/浓度应由使用者检定。

应用	Ab评论	说明
IHC-P		Use at an assay dependent concentration.

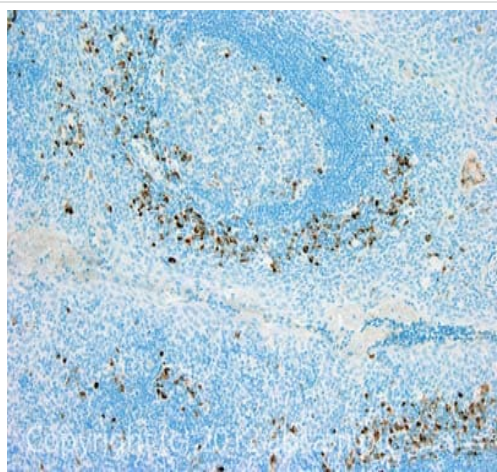
靶标

相关性

Immunoglobulins belong to a group of related glyco proteins which make up 20% of serum proteins. Antigens and immunoglobulins react to confer immunity to individuals. Immunoglobulins have similar structures of two identical heavy chains and two identical light chains. Both the heavy chains and the light chains are divided into constant and variable regions. The constant regions have the same amino acid sequences between all the immunoglobulin classes. The variable regions have approximately 110 amino acids with high sequence variability. The amino acid sequence of the heavy chain determines the class of an immunoglobulin. The five types of immunoglobulin heavy chains are known as: IgG, IgA, IgM, IgD, and IgE. IgG is divided into four subclasses, and IgA is divided into two subclasses. In serum IgA and IgG are monomers with a single 4 polypeptide unit; while, IgM is a pentamer. IgA may also form polymers. Kappa light chain antibody can be used for the identification of leukemias, plasmacytomas and certain non Hodgkin's lymphomas. Kappa light chain contains one immunoglobulin like domain. The EU sequence has the INV allotypic marker, Ala 45 and Val 83. The ROY sequence has the INV allotypic marker, Ala 45 and Leu 83.

细胞定位 Cytoplasmic and Secreted

图片



Immunohistochemistry (Formalin/PFA-fixed paraffin-embedded sections) - Anti-Kappa light chain antibody [4G7] (ab1936)

IHC image of Kappa light chain staining in Human normal tonsil formalin fixed paraffin embedded tissue section, performed on a Leica Bond™ system using the standard protocol F. The section was pre-treated using heat mediated antigen retrieval with sodium citrate buffer (pH6, epitope retrieval solution 1) for 20 mins. The section was then incubated with ab1936, 5µg/ml, for 15 mins at room temperature and detected using an HRP conjugated compact polymer system. DAB was used as the chromogen. The section was then counterstained with haematoxylin and mounted with DPX.

For other IHC staining systems (automated and non-automated) customers should optimize variable parameters such as antigen retrieval conditions, primary antibody concentration and antibody incubation times.

Please note: All products are "FOR RESEARCH USE ONLY. NOT FOR USE IN DIAGNOSTIC PROCEDURES"

Our Abpromise to you: Quality guaranteed and expert technical support

- Replacement or refund for products not performing as stated on the datasheet
- Valid for 12 months from date of delivery
- Response to your inquiry within 24 hours
- We provide support in Chinese, English, French, German, Japanese and Spanish
- Extensive multi-media technical resources to help you
- We investigate all quality concerns to ensure our products perform to the highest standards

If the product does not perform as described on this datasheet, we will offer a refund or replacement. For full details of the Abpromise, please visit <https://www.abcam.cn/abpromise> or contact our technical team.

Terms and conditions

- Guarantee only valid for products bought direct from Abcam or one of our authorized distributors