

### Anti-Kallikrein 6 antibody ab109295

#### 1 图像

#### 概述

产品名称	Anti-Kallikrein 6抗体
描述	山羊多克隆抗体to Kallikrein 6
宿主	Goat
经测试应用	适用于: WB
种属反应性	与反应: Mouse 预测可用于: Rat, Cow 
免疫原	Synthetic peptide: KEKPGVYTDVCTHIR , corresponding to C terminal amino acids 228-242 of Mouse Kallikrein 6 (NP_035307.1)  <a href="#">Run BLAST with</a>  <a href="#">Run BLAST with</a>
阳性对照	Mouse Liver lysate
常规说明	<p>The Life Science industry has been in the grips of a reproducibility crisis for a number of years. Abcam is leading the way in addressing this with our range of recombinant monoclonal antibodies and knockout edited cell lines for gold-standard validation. Please check that this product meets your needs before purchasing.</p> <p>If you have any questions, special requirements or concerns, please send us an inquiry and/or contact our Support team ahead of purchase. Recommended alternatives for this product can be found below, along with publications, customer reviews and Q&amp;As</p>

#### 性能

形式	Liquid
存放说明	Shipped at 4°C. Upon delivery aliquot and store at -20°C. Avoid freeze / thaw cycles.
存储溶液	pH: 7.30 Preservative: 0.02% Sodium azide Constituents: Tris buffered saline, 0.5% BSA
纯度	Immunogen affinity purified
纯化说明	ab109295 is purified from goat serum by ammonium sulphate precipitation followed by antigen affinity chromatography using the immunizing peptide.
克隆	多克隆

同种型

IgG

## 应用

The Abpromise guarantee

**Abpromise™**承诺保证使用ab109295于以下的经测试应用

“应用说明”部分 下显示的仅为推荐的起始稀释度;实际最佳的稀释度/浓度应由使用者检定。

应用	Ab评论	说明
WB		Use a concentration of 1 - 3 µg/ml. Detects a band of approximately 22 kDa (predicted molecular weight: 27 kDa). 1 hour primary incubation is recommended for this product.

## 靶标

### 功能

Serine protease which exhibits a preference for Arg over Lys in the substrate P1 position and for Ser or Pro in the P2 position. Shows activity against amyloid precursor protein, myelin basic protein, gelatin, casein and extracellular matrix proteins such as fibronectin, laminin, vitronectin and collagen. Degrades alpha-synuclein and prevents its polymerization, indicating that it may be involved in the pathogenesis of Parkinson disease and other synucleinopathies. May be involved in regulation of axon outgrowth following spinal cord injury. Tumor cells treated with a neutralizing KLK6 antibody migrate less than control cells, suggesting a role in invasion and metastasis.

### 组织特异性

In fluids, highest levels found in milk of lactating women followed by cerebrospinal fluid, nipple aspirate fluid and breast cyst fluid. Also found in serum, seminal plasma and some amniotic fluids and breast tumor cytosolic extracts. Not detected in urine. At the tissue level, highest concentrations found in glandular tissues such as salivary glands followed by lung, colon, fallopian tube, placenta, breast, pituitary and kidney. Not detected in skin, spleen, bone, thyroid, heart, ureter, liver, muscle, endometrium, testis, pancreas, seminal vesicle, ovary, adrenals and prostate. In brain, detected in gray matter neurons (at protein level). Colocalizes with pathological inclusions such as Lewy bodies and glial cytoplasmic inclusions. Overexpressed in primary breast tumors but not expressed in metastatic tumors.

### 序列相似性

Belongs to the peptidase S1 family. Kallikrein subfamily.  
Contains 1 peptidase S1 domain.

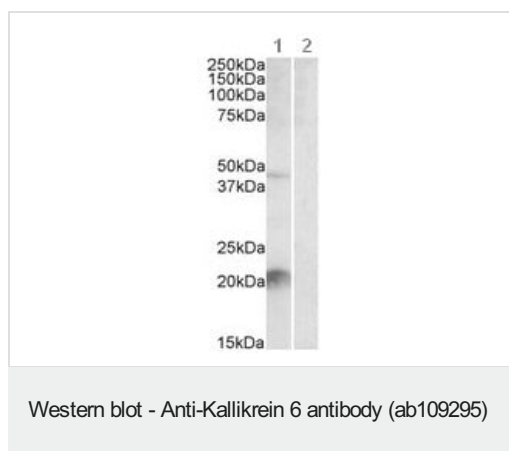
### 翻译后修饰

Inactivated by autolytic cleavage after Arg-80.

### 细胞定位

Secreted. Nucleus > nucleolus. Cytoplasm. Mitochondrion. Microsome. In brain, detected in the nucleus of glial cells and in the nucleus and cytoplasm of neurons. Detected in the mitochondrial and microsomal fractions of HEK-293 cells and released into the cytoplasm following cell stress.

## 图片



**All lanes :** Anti-Kallikrein 6 antibody (ab109295) at 2 µg/ml

**Lane 1 :** Mouse Liver lysate (in RIPA buffer) without immunizing peptide

**Lane 2 :** Mouse Liver lysate (in RIPA buffer) with immunizing peptide

Lysates/proteins at 35 µg per lane.

Developed using the ECL technique.

**Predicted band size:** 27 kDa

**Observed band size:** 22 kDa

**Additional bands at:** 48 kDa. We are unsure as to the identity of these extra bands.

Primary incubation was 1 hour.

**Please note:** All products are "FOR RESEARCH USE ONLY. NOT FOR USE IN DIAGNOSTIC PROCEDURES"

### Our Abpromise to you: Quality guaranteed and expert technical support

- Replacement or refund for products not performing as stated on the datasheet
- Valid for 12 months from date of delivery
- Response to your inquiry within 24 hours
- We provide support in Chinese, English, French, German, Japanese and Spanish
- Extensive multi-media technical resources to help you
- We investigate all quality concerns to ensure our products perform to the highest standards

If the product does not perform as described on this datasheet, we will offer a refund or replacement. For full details of the Abpromise, please visit <https://www.abcam.cn/abpromise> or contact our technical team.

### Terms and conditions

- Guarantee only valid for products bought direct from Abcam or one of our authorized distributors