

### Anti-JunD antibody ab28837

★★★★★ [1 Abreviews](#) [10 References](#) [2 图像](#)

#### 概述

---

<b>产品名称</b>	Anti-JunD抗体
<b>描述</b>	兔多克隆抗体to JunD
<b>宿主</b>	Rabbit
<b>经测试应用</b>	<b>适用于:</b> IHC-P, WB
<b>种属反应性</b>	<b>与反应:</b> Human
<b>免疫原</b>	Synthetic non-phosphopeptide derived from human JunD around the phosphorylation site of Serine 255.
<b>常规说明</b>	<p>The Life Science industry has been in the grips of a reproducibility crisis for a number of years. Abcam is leading the way in addressing this with our range of recombinant monoclonal antibodies and knockout edited cell lines for gold-standard validation. Please check that this product meets your needs before purchasing.</p> <p>If you have any questions, special requirements or concerns, please send us an inquiry and/or contact our Support team ahead of purchase. Recommended alternatives for this product can be found below, along with publications, customer reviews and Q&amp;As</p>

#### 性能

---

<b>形式</b>	Liquid
<b>存放说明</b>	Shipped at 4°C. Store at +4°C short term (1-2 weeks). Upon delivery aliquot. Store at -20°C long term.
<b>存储溶液</b>	pH: 7.40 Preservative: 0.02% Sodium azide Constituents: PBS, 50% Glycerol, 0.87% Sodium chloride
<b>纯度</b>	Without Mg <sup>2+</sup> and Ca <sup>2+</sup> Immunogen affinity purified
<b>克隆</b>	多克隆
<b>同种型</b>	IgG

#### 应用

---

## The Abpromise guarantee

**Abpromise™** 承诺保证使用ab28837于以下的经测试应用

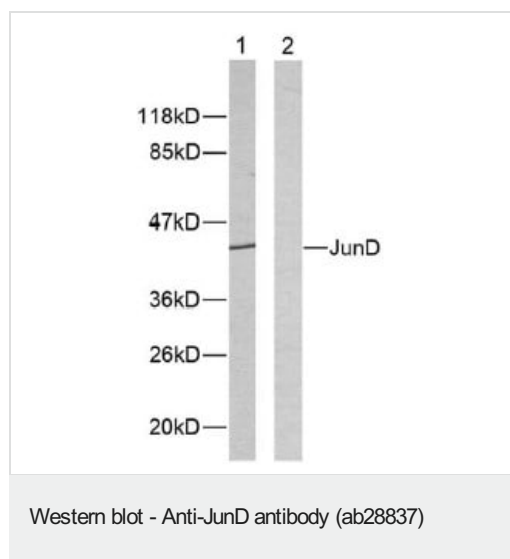
“应用说明”部分下显示的仅为推荐的起始稀释度;实际最佳的稀释度/浓度应由使用者检定。

应用	Ab评论	说明
IHC-P		Use at an assay dependent concentration.
WB		1/500 - 1/1000. Predicted molecular weight: 35 kDa.

## 靶标

功能	Transcription factor binding AP-1 sites.
序列相似性	Belongs to the bZIP family. Jun subfamily. Contains 1 bZIP domain.
细胞定位	Nucleus.

## 图片



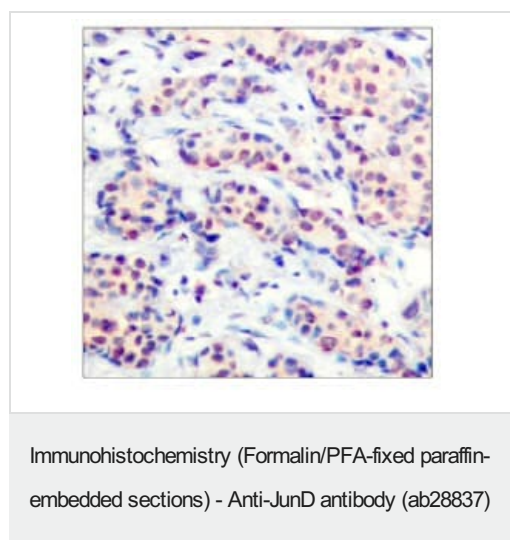
**Lane 1** : Anti-JunD antibody (ab28837) at 1/500 dilution

**Lane 2** : Anti-JunD antibody (ab28837) at 1/500 dilution  
(preincubated with synthesized peptide.)

**All lanes** : extracts from Hela cells.

**Predicted band size:** 35 kDa

**Observed band size:** 43 kDa



Immunohistochemical analysis of paraffin embedded human breast carcinoma, using 1/50 JunD Antibody(ab28837).

**Please note:** All products are "FOR RESEARCH USE ONLY. NOT FOR USE IN DIAGNOSTIC PROCEDURES"

### **Our Abpromise to you: Quality guaranteed and expert technical support**

---

- Replacement or refund for products not performing as stated on the datasheet
- Valid for 12 months from date of delivery
- Response to your inquiry within 24 hours
  
- We provide support in Chinese, English, French, German, Japanese and Spanish
- Extensive multi-media technical resources to help you
- We investigate all quality concerns to ensure our products perform to the highest standards

If the product does not perform as described on this datasheet, we will offer a refund or replacement. For full details of the Abpromise, please visit <https://www.abcam.cn/abpromise> or contact our technical team.

### **Terms and conditions**

---

- Guarantee only valid for products bought direct from Abcam or one of our authorized distributors