


Anti-Junctional Adhesion Molecule 2/JAM-B antibody ab96465

[1 References](#) [1 图像](#)

概述

产品名称	Anti-Junctional Adhesion Molecule 2/JAM-B抗体
描述	兔多克隆抗体to Junctional Adhesion Molecule 2/JAM-B
宿主	Rabbit
经测试应用	适用于: WB
种属反应性	与反应: Human 预测可用于: Cow, Monkey 
免疫原	Recombinant fragment corresponding to Human Junctional Adhesion Molecule 2/JAM-B aa 1-264. Database link: NP_067042
阳性对照	A431 whole cell lysate; 293T, H1299, HeLa S3, HepG2, Molt-4 and Raji cell lysates
常规说明	<p>The Life Science industry has been in the grips of a reproducibility crisis for a number of years. Abcam is leading the way in addressing this with our range of recombinant monoclonal antibodies and knockout edited cell lines for gold-standard validation. Please check that this product meets your needs before purchasing.</p> <p>If you have any questions, special requirements or concerns, please send us an inquiry and/or contact our Support team ahead of purchase. Recommended alternatives for this product can be found below, along with publications, customer reviews and Q&As</p>

性能

形式	Liquid
存放说明	Shipped at 4°C. Upon delivery aliquot. Store at -20°C or -80°C. Avoid freeze / thaw cycle.
存储溶液	pH: 7.00 Preservative: 0.01% Thimerosal (merthiolate) Constituents: 1.21% Tris, 0.75% Glycine, 10% Glycerol (glycerin, glycerine)
纯度	Immunogen affinity purified
克隆	多克隆
同种型	IgG

应用

The Abpromise guarantee

Abpromise™ 承诺保证使用 ab96465 于以下的经测试应用

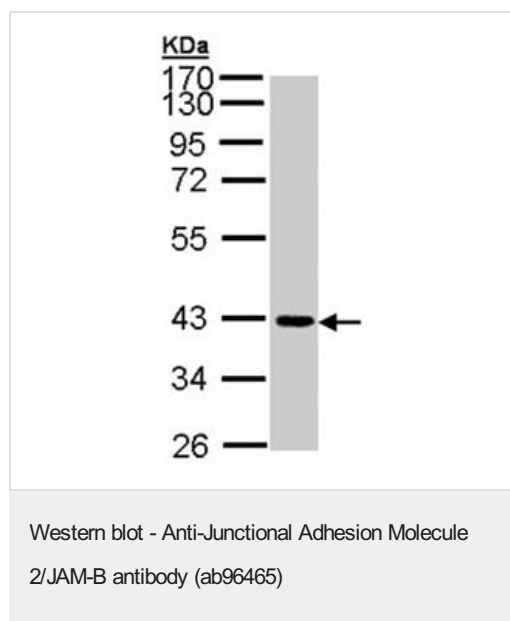
“应用说明”部分下显示的仅为推荐的起始稀释度；实际最佳的稀释度/浓度应由使用者检定。

应用	Ab评论	说明
WB		1/500 - 1/3000. Predicted molecular weight: 33 kDa.

靶标

功能	May play a role in the processes of lymphocyte homing to secondary lymphoid organs.
组织特异性	Highest expression in the heart, placenta, lung, foreskin and lymph node. Prominently expressed on high endothelial venules, also present on the endothelia of other vessels. Localized to the intercellular boundaries of high endothelial cells.
序列相似性	Belongs to the immunoglobulin superfamily. Contains 1 Ig-like C2-type (immunoglobulin-like) domain. Contains 1 Ig-like V-type (immunoglobulin-like) domain.
细胞定位	Cell junction > tight junction. Cell membrane. Localized at tight junctions of both epithelial and endothelial cells.

图片



Anti-Junctional Adhesion Molecule 2/JAM-B antibody (ab96465) at 1/1000 dilution + A431 whole cell lysate at 30 µg

Predicted band size: 33 kDa

12% SDS PAGE

Please note: All products are "FOR RESEARCH USE ONLY. NOT FOR USE IN DIAGNOSTIC PROCEDURES"

Our Abpromise to you: Quality guaranteed and expert technical support

- Replacement or refund for products not performing as stated on the datasheet
- Valid for 12 months from date of delivery

- Response to your inquiry within 24 hours
- We provide support in Chinese, English, French, German, Japanese and Spanish
- Extensive multi-media technical resources to help you
- We investigate all quality concerns to ensure our products perform to the highest standards

If the product does not perform as described on this datasheet, we will offer a refund or replacement. For full details of the Abpromise, please visit <https://www.abcam.cn/abpromise> or contact our technical team.

Terms and conditions

- Guarantee only valid for products bought direct from Abcam or one of our authorized distributors