




Anti-Junctional Adhesion Molecule 1/JAM-A antibody ab91501

1 图像

概述

产品名称	Anti-Junctional Adhesion Molecule 1/JAM-A抗体
描述	山羊多克隆抗体 to Junctional Adhesion Molecule 1/JAM-A
宿主	Goat
经测试应用	适用于: WB
种属反应性	与反应: Human 预测可用于: Mouse, Rat, Cat, Dog, Pig 
免疫原	Synthetic peptide corresponding to Human Junctional Adhesion Molecule 1/JAM-A aa 282-295 (C terminal). Sequence: C-QPSARSEGEFKQTS Database link: NP_058642.1 <div>  Run BLAST with  Run BLAST with </div>
阳性对照	Human peripheral blood mononucleocyte lysate
常规说明	<p>The Life Science industry has been in the grips of a reproducibility crisis for a number of years. Abcam is leading the way in addressing this with our range of recombinant monoclonal antibodies and knockout edited cell lines for gold-standard validation. Please check that this product meets your needs before purchasing.</p> <p>If you have any questions, special requirements or concerns, please send us an inquiry and/or contact our Support team ahead of purchase. Recommended alternatives for this product can be found below, along with publications, customer reviews and Q&As</p>

性能

形式	Liquid
存放说明	Shipped at 4°C. Upon delivery aliquot and store at -20°C. Avoid repeated freeze / thaw cycles.
存储溶液	pH: 7.30 Preservative: 0.02% Sodium azide Constituents: 0.5% Tris buffered saline, 0.5% BSA
纯度	Immunogen affinity purified
纯化说明	ab91501 was purified from goat serum by ammonium sulphate precipitation followed by antigen

affinity chromatography using the immunizing peptide.

克隆

多克隆

同种型

IgG

应用

The Abpromise guarantee

Abpromise™承诺保证使用ab91501于以下的经测试应用

“应用说明”部分 下显示的仅为推荐的起始稀释度;实际最佳的稀释度/浓度应由使用者检定。

应用	Ab评论	说明
WB		Use a concentration of 0.3 - 2 µg/ml. Detects a band of approximately 38 kDa (predicted molecular weight: 33 kDa). A 1 hour primary incubation is recommended for this product.

靶标

功能

Seems to plays a role in epithelial tight junction formation. Appears early in primordial forms of cell junctions and recruits PARD3. The association of the PARD6-PARD3 complex may prevent the interaction of PARD3 with JAM1, thereby preventing tight junction assembly (By similarity). Plays a role in regulating monocyte transmigration involved in integrity of epithelial barrier. Involved in platelet activation. In case of orthoreovirus infection, serves as receptor for the virus.

序列相似性

Belongs to the immunoglobulin superfamily.
Contains 2 Ig-like V-type (immunoglobulin-like) domains.

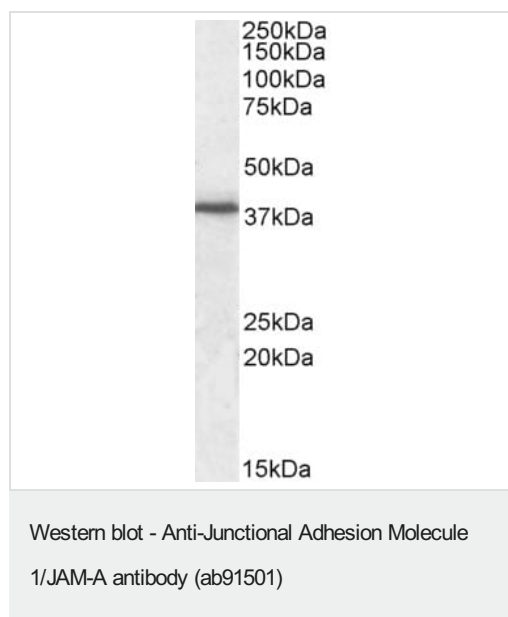
翻译后修饰

N-glycosylated.

细胞定位

Cell junction > tight junction. Cell membrane. Localized at tight junctions of both epithelial and endothelial cells.

图片



Anti-Junctional Adhesion Molecule 1/JAM-A antibody (ab91501) at 0.3 µg/ml + Human Peripheral Blood Mononucleocyte lysate at 35 µg

Predicted band size: 33 kDa

Observed band size: 38 kDa

The observed molecular weight corresponds to earlier findings with different antibodies from other commercial sources.

Please note: All products are "FOR RESEARCH USE ONLY. NOT FOR USE IN DIAGNOSTIC PROCEDURES"

Our Abpromise to you: Quality guaranteed and expert technical support

- Replacement or refund for products not performing as stated on the datasheet
- Valid for 12 months from date of delivery
- Response to your inquiry within 24 hours
- We provide support in Chinese, English, French, German, Japanese and Spanish
- Extensive multi-media technical resources to help you
- We investigate all quality concerns to ensure our products perform to the highest standards

If the product does not perform as described on this datasheet, we will offer a refund or replacement. For full details of the Abpromise, please visit <https://www.abcam.cn/abpromise> or contact our technical team.

Terms and conditions

- Guarantee only valid for products bought direct from Abcam or one of our authorized distributors