


Anti-JP-2 antibody ab110056

☆☆☆☆☆ [1 Abreviews](#) [1 References](#) [3 图像](#)

概述	
产品名称	Anti-JP-2抗体
描述	兔多克隆抗体to JP-2
宿主	Rabbit
特异性	Multiple isoforms of JPH2 are known to exist.
经测试应用	适用于: WB, IHC-P
种属反应性	与反应: Mouse, Human 预测可用于: Rat 
免疫原	Synthetic peptide corresponding to Human JP-2 (C terminal).
阳性对照	Human Heart and Skeletal Muscle. Mouse brain tissue lysate.
常规说明	<p>The Life Science industry has been in the grips of a reproducibility crisis for a number of years. Abcam is leading the way in addressing this with our range of recombinant monoclonal antibodies and knockout edited cell lines for gold-standard validation. Please check that this product meets your needs before purchasing.</p> <p>If you have any questions, special requirements or concerns, please send us an inquiry and/or contact our Support team ahead of purchase. Recommended alternatives for this product can be found below, along with publications, customer reviews and Q&amp;As</p>
性能	
形式	Liquid
存放说明	Shipped at 4°C. Store at +4°C short term (1-2 weeks). Upon delivery aliquot. Store at -20°C long term.
存储溶液	pH: 7.4 Preservative: 0.02% Sodium azide Constituent: PBS
纯度	Immunogen affinity purified
克隆	多克隆
同种型	IgG

**The Abpromise guarantee**      **Abpromise™**承诺保证使用ab110056于以下的经测试应用

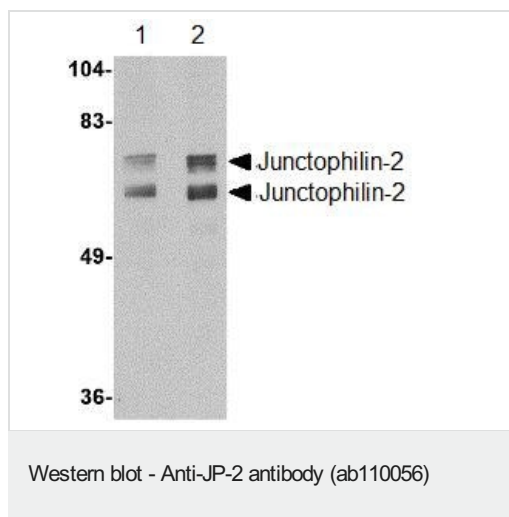
“应用说明”部分 下显示的仅为推荐的起始稀释度;实际最佳的稀释度/浓度应由使用者检定。

应用	Ab评论	说明
WB		Use a concentration of 1 - 2 µg/ml. Predicted molecular weight: 75 kDa.
IHC-P		Use a concentration of 5 µg/ml.

靶标

功能	Contributes to the stabilization of the junctional membrane complexes, which are common to excitable cells and mediate cross-talk between cell surface and intracellular ion channels. Probably acts by anchoring the plasma membrane and endoplasmic/sarcoplasmic reticulum. Contributes to the construction of skeletal muscle triad junctions, and plays an essential role in heart development.
组织特异性	Specifically expressed in skeletal muscle and heart.
疾病相关	Defects in JPH2 are the cause of cardiomyopathy familial hypertrophic type 17 (CMH17) [MIM:613873]. CMH17 is a hereditary heart disorder characterized by ventricular hypertrophy, which is usually asymmetric and often involves the interventricular septum. The symptoms include dyspnea, syncope, collapse, palpitations, and chest pain. They can be readily provoked by exercise. The disorder has inter- and intrafamilial variability ranging from benign to malignant forms with high risk of cardiac failure and sudden cardiac death.
序列相似性	Belongs to the junctophilin family. Contains 8 MORN repeats.
结构域	The MORN (membrane occupation and recognition nexus) repeats contribute to the plasma membrane binding, possibly by interacting with phospholipids.
细胞定位	Cell membrane. Endoplasmic reticulum membrane. Sarcoplasmic reticulum membrane. Localized predominantly on the plasma membrane. The transmembrane domain is anchored in endoplasmic/sarcoplasmic reticulum membrane, while the N-terminal part associates with the plasma membrane. In heart cells, it predominantly associates along Z lines within myocytes. In skeletal muscle, it is specifically localized at the junction of A and I bands.

图片

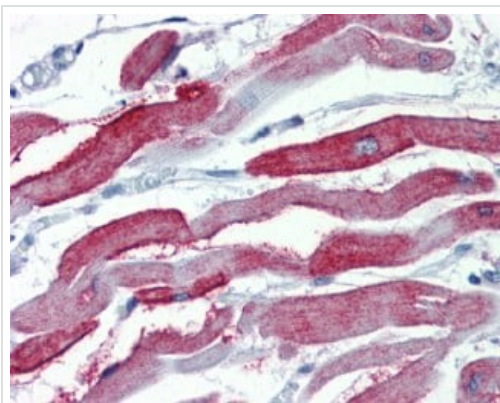


**Lane 1 :** Anti-JP-2 antibody (ab110056) at 1 µg/ml

**Lane 2 :** Anti-JP-2 antibody (ab110056) at 2 µg/ml

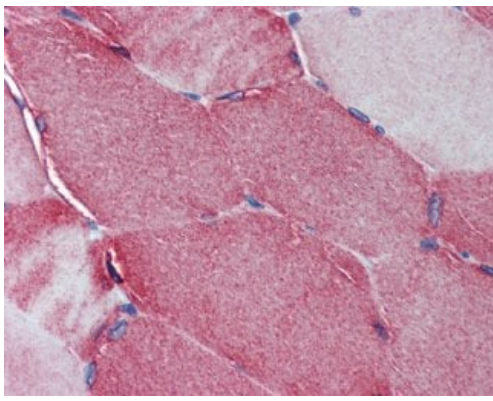
**All lanes :** Mouse brain tissue lysate

**Predicted band size:** 75 kDa



Immunohistochemistry (Formalin/PFA-fixed paraffin-embedded sections) - Anti-JP-2 antibody (ab110056)

ab110056 at 5 µg/ml staining JP-2 in Formalin-Fixed, Paraffin-Embedded Human Heart by Immunohistochemistry.



Immunohistochemistry (Formalin/PFA-fixed paraffin-embedded sections) - Anti-JP-2 antibody (ab110056)

ab110056 at 5 µg/ml staining JP-2 in Formalin-Fixed, Paraffin-Embedded Human Skeletal Muscle by Immunohistochemistry.

**Please note:** All products are "FOR RESEARCH USE ONLY. NOT FOR USE IN DIAGNOSTIC PROCEDURES"

### Our Abpromise to you: Quality guaranteed and expert technical support

---

- Replacement or refund for products not performing as stated on the datasheet
- Valid for 12 months from date of delivery
- Response to your inquiry within 24 hours
- We provide support in Chinese, English, French, German, Japanese and Spanish
- Extensive multi-media technical resources to help you
- We investigate all quality concerns to ensure our products perform to the highest standards

If the product does not perform as described on this datasheet, we will offer a refund or replacement. For full details of the Abpromise, please visit <https://www.abcam.cn/abpromise> or contact our technical team.

### Terms and conditions

---

- Guarantee only valid for products bought direct from Abcam or one of our authorized distributors