

Anti-JDP2 antibody ab40916

1 Abreviews 5 References 2 图像

概述	
产品名称	Anti-JDP2抗体
描述	兔多克隆抗体to JDP2
宿主	Rabbit
特异性	From Jan 2024, QC testing of replenishment batches of this polyclonal changed. All tested and expected application and reactive species combinations are still covered by our Abcam product promise. However, we no longer test all applications. For more information on a specific batch, please contact our Scientific Support who will be happy to help.
经测试应用	适用于: WB, ICC/IF 不适用于: IHC-P
种属反应性	与反应: Human 预测可用于: Rat 不与反应: Mouse
免疫原	Synthetic peptide conjugated to KLH derived from within residues 100 to the C-terminus of Human JDP2.参阅Abcam的专有抗源政策(Peptide available as <a href="#">ab41625</a> .)
阳性对照	ab40916 gave a positive signal in WB on the following lysates: HeLa whole cell, HeLa nuclear, Jurkat whole cell, Jurkat nuclear, HepG2 nuclear, Du145 whole cell and LnCAP nuclear. ICC/IF: HepG2 cells.
常规说明	<p>The Life Science industry has been in the grips of a reproducibility crisis for a number of years. Abcam is leading the way in addressing this with our range of recombinant monoclonal antibodies and knockout edited cell lines for gold-standard validation. Please check that this product meets your needs before purchasing.</p> <p>If you have any questions, special requirements or concerns, please send us an inquiry and/or contact our Support team ahead of purchase. Recommended alternatives for this product can be found below, along with publications, customer reviews and Q&amp;As</p>
性能	
形式	Liquid
存放说明	Shipped at 4°C. Store at +4°C short term (1-2 weeks). Upon delivery aliquot. Store at -20°C or -80°C. Avoid freeze / thaw cycle.
存储溶液	pH: 7.40 Preservative: 0.02% Sodium azide

Constituent: PBS

Batches of this product that have a concentration < 1mg/ml may have BSA added as a stabilising agent. If you would like information about the formulation of a specific lot, please contact our scientific support team who will be happy to help.

**纯度** Immunogen affinity purified  
**克隆** 多克隆  
**同种型** IgG

## 应用

**The Abpromise guarantee** Abpromise™承诺保证使用ab40916于以下的经测试应用

“应用说明”部分 下显示的仅为推荐的起始稀释度;实际最佳的稀释度/浓度应由使用者检定。

应用	Ab评论	说明
WB		Use a concentration of 1 µg/ml. Detects a band of approximately 19 kDa (predicted molecular weight: 19 kDa).
ICC/IF		Use a concentration of 1 µg/ml.

**应用说明** Is unsuitable for IHC-P.

## 靶标

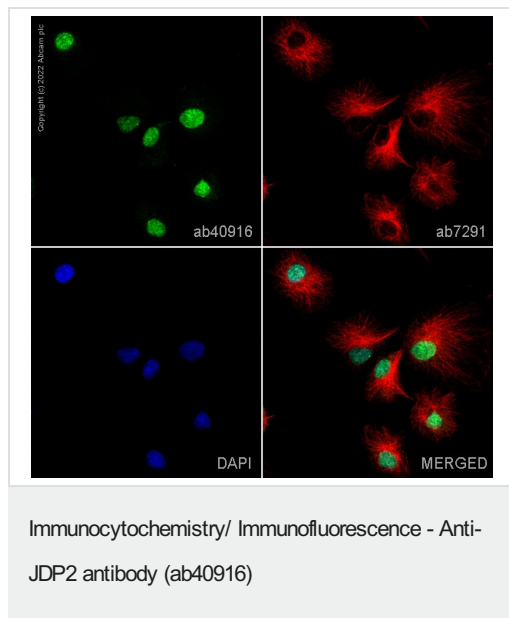
**功能** Component of the AP-1 transcription factor that represses transactivation mediated by the Jun family of proteins. Involved in a variety of transcriptional responses associated with AP-1 such as UV-induced apoptosis, cell differentiation, tumorigenesis and antitumogenesis. Can also function as a repressor by recruiting histone deacetylase 3/HDAC3 to the promoter region of JUN. May control transcription via direct regulation of the modification of histones and the assembly of chromatin.

**序列相似性** Belongs to the bZIP family. ATF subfamily.  
Contains 1 bZIP domain.

**翻译后修饰** Phosphorylation of Thr-148 by MAPK8 in response to different stress conditions such as, UV irradiation, oxidative stress and anisomycin treatments.

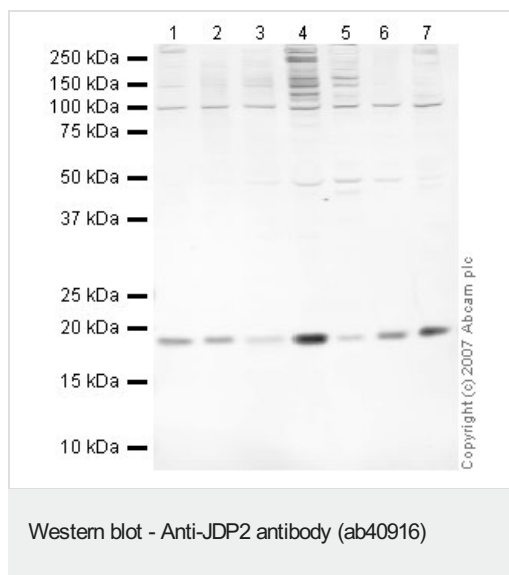
**细胞定位** Nucleus.

## 图片



ab40916 staining JDP2 in HepG2 cells. The cells were fixed with 100% methanol (5 min), permeabilized with 0.1% PBS-Triton X-100 for 5 minutes and then blocked with 1% BSA/10% normal goat serum/0.3M glycine in 0.1%PBS-Tween for 1h. The cells were then incubated overnight at 4°C with ab40916 at 1µg/ml and **ab7291**, Mouse monoclonal [DM1A] to alpha Tubulin - Loading Control. Cells were then incubated with **ab150081**, Goat polyclonal Secondary Antibody to Rabbit IgG - H&L (Alexa Fluor® 488), pre-adsorbed at 1/1000 dilution (shown in green) and **ab150120**, Goat polyclonal Secondary Antibody to Mouse IgG - H&L (Alexa Fluor® 594), pre-adsorbed at 1/1000 dilution (shown in pseudocolour red). Nuclear DNA was labelled with DAPI (shown in blue).

Image was acquired with a high-content analyser (Operetta CLS, Perkin Elmer) and a maximum intensity projection of confocal sections is shown.



**All lanes** : Anti-JDP2 antibody (ab40916) at 1 µg/ml

**Lane 1** : HeLa (Human epithelial carcinoma cell line) Whole Cell Lysate

**Lane 2** : HeLa (Human epithelial carcinoma cell line) Nuclear Lysate

**Lane 3** : Jurkat (Human T cell lymphoblast-like cell line) Whole Cell Lysate

**Lane 4** : Jurkat nuclear extract lysate (**ab14844**)

**Lane 5** : Hep G2 nuclear extract lysate (**ab14660**)

**Lane 6** : Du145 (Human prostate carcinoma cell line) Whole Cell Lysate

**Lane 7** : LNCaP (Human prostate adenocarcinoma cell line) Nuclear lysate

Lysates/proteins at 10 µg per lane.

## Secondary

**All lanes** : IRDye 680 Conjugated Goat Anti-Rabbit IgG (H+L) at 1/10000 dilution

Performed under reducing conditions.

**Predicted band size:** 19 kDa

**Observed band size:** 19 kDa

**Please note:** All products are "FOR RESEARCH USE ONLY. NOT FOR USE IN DIAGNOSTIC PROCEDURES"

#### **Our Abpromise to you: Quality guaranteed and expert technical support**

---

- Replacement or refund for products not performing as stated on the datasheet
- Valid for 12 months from date of delivery
- Response to your inquiry within 24 hours
- We provide support in Chinese, English, French, German, Japanese and Spanish
- Extensive multi-media technical resources to help you
- We investigate all quality concerns to ensure our products perform to the highest standards

If the product does not perform as described on this datasheet, we will offer a refund or replacement. For full details of the Abpromise, please visit <https://www.abcam.cn/abpromise> or contact our technical team.

#### **Terms and conditions**

---

- Guarantee only valid for products bought direct from Abcam or one of our authorized distributors