


Anti-Jagged1 antibody ab7771

★★★★★ [14 Abreviews](#) [85 References](#) [4 图像](#)

概述

产品名称	Anti-Jagged1抗体
描述	兔多克隆抗体to Jagged1
宿主	Rabbit
经测试应用	适用于: ICC/IF, IHC-P, WB
种属反应性	与反应: Mouse, Human 预测可用于: Rat 
免疫原	Synthetic peptide: N-KASRGNDRNRVLPFS conjugated to KLH, corresponding to amino acids 110-125 of Human Jagged1 Run BLAST with Expasy Run BLAST with NCBI
阳性对照	WB: Mouse liver lysate. IHC: Human cervical and human cervical cancer tissues. ICC/IF: Human corneal epithelial cells
常规说明	<p>The Life Science industry has been in the grips of a reproducibility crisis for a number of years. Abcam is leading the way in addressing this with our range of recombinant monoclonal antibodies and knockout edited cell lines for gold-standard validation. Please check that this product meets your needs before purchasing.</p> <p>If you have any questions, special requirements or concerns, please send us an inquiry and/or contact our Support team ahead of purchase. Recommended alternatives for this product can be found below, along with publications, customer reviews and Q&As</p>

性能

形式	Liquid
存放说明	Shipped at 4°C. Upon delivery aliquot and store at -20°C or -80°C. Avoid repeated freeze / thaw cycles.
存储溶液	Preservative: 0.01% Sodium azide Constituents: 0.42% Potassium phosphate, 0.88% Sodium chloride
纯度	Protein A purified
克隆	多克隆
同种型	IgG

应用

The Abpromise guarantee Abpromise™ 承诺保证使用ab7771于以下的经测试应用

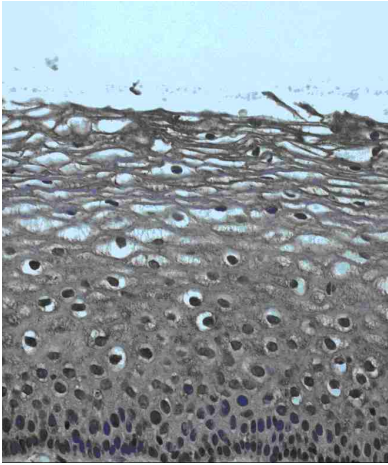
“应用说明”部分 下显示的仅为推荐的起始稀释度;实际最佳的稀释度/浓度应由使用者检定。

应用	Ab评论	说明
ICC/IF	★★★★★ (2)	Use at an assay dependent concentration.
IHC-P	★★★★★ (4)	1/100.
WB	★★★★★ (2)	1/500. Detects a band of approximately 150 kDa (predicted molecular weight: 134 kDa). 150 kDa in mouse liver lysate.

靶标

功能	Ligand for multiple Notch receptors and involved in the mediation of Notch signaling. May be involved in cell-fate decisions during hematopoiesis. Seems to be involved in early and late stages of mammalian cardiovascular development. Inhibits myoblast differentiation (By similarity). Enhances fibroblast growth factor-induced angiogenesis (in vitro).
组织特异性	Widely expressed in adult and fetal tissues. In cervix epithelium expressed in undifferentiated subcolumnar reserve cells and squamous metaplasia. Expression is up-regulated in cervical squamous cell carcinoma. Expressed in bone marrow cell line HS-27a which supports the long-term maintenance of immature progenitor cells.
疾病相关	Defects in JAG1 are the cause of Alagille syndrome type 1 (ALGS1) [MIM:118450]. Alagille syndrome is an autosomal dominant multisystem disorder defined clinically by hepatic bile duct paucity and cholestasis in association with cardiac, skeletal, and ophthalmologic manifestations. There are characteristic facial features and less frequent clinical involvement of the renal and vascular systems. Defects in JAG1 are a cause of tetralogy of Fallot (TOF) [MIM:187500]. TOF is a congenital heart anomaly which consists of pulmonary stenosis, ventricular septal defect, dextroposition of the aorta (aorta is on the right side instead of the left) and hypertrophy of the right ventricle. This condition results in a blue baby at birth due to inadequate oxygenation. Surgical correction is emergent.
序列相似性	Contains 1 DSL domain. Contains 15 EGF-like domains.
发展阶段	Expressed in 32-52 days embryos in the distal cardiac outflow tract and pulmonary artery, major arteries, portal vein, optic vesicle, otocyst, branchial arches, metanephros, pancreas, mesocardium, around the major bronchial branches, and in the neural tube.
细胞定位	Membrane.

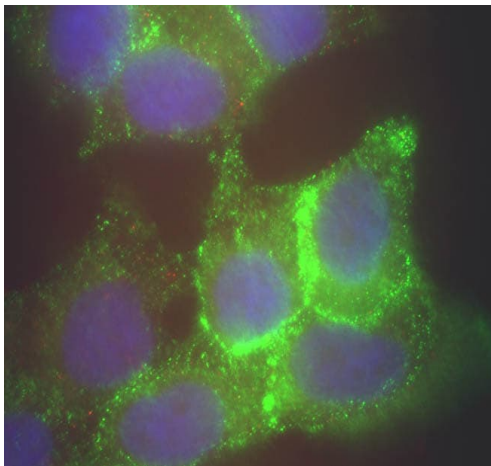
图片



Formalin-fixed paraffin embedded IHC of normal human cervical tissues (40x magnification) stained with ab7771 (1/100 dilution). The slides were counterstained with hematoxylin

Immunohistochemistry (Formalin/PFA-fixed paraffin-embedded sections) - Anti-Jagged1 antibody (ab7771)

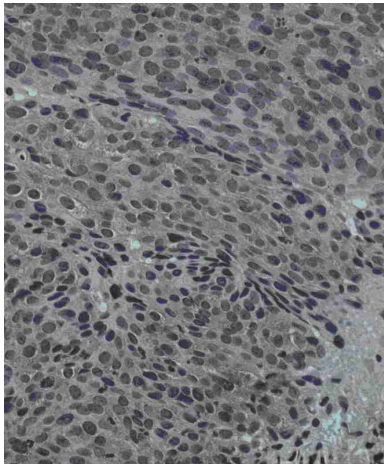
This image is courtesy of the Martin Kast Laboratory



Staining of Human corneal epithelial cells with anti-Jagged1 (ab7771, 1/500). The Jagged1 (green staining) is localised to the cytoplasm and cell nucleus and is consistent with reports in the literature. The nucleus is stained with Bis benzimide (1/500, blue staining).

Immunocytochemistry/ Immunofluorescence - Anti-Jagged1 antibody (ab7771)

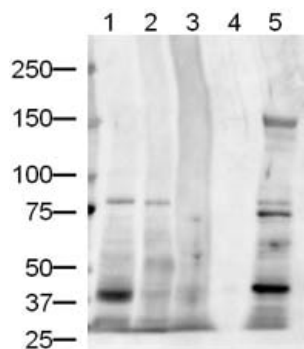
This image is courtesy of Aihua Ma, University of Cardiff



Formalin-fixed paraffin embedded IHC of human cervical cancer tissues (40x magnification) stained with ab7771 (1/100 dilution). The slides were counterstained with hematoxylin

Immunohistochemistry (Formalin/PFA-fixed paraffin-embedded sections) - Anti-Jagged1 antibody (ab7771)

This image is courtesy of the Martin Kast Laboratory



Western blot - Anti-Jagged1 antibody (ab7771)

ab7771 Rabbit polyclonal to Jagged1 (1/500) with secondary Goat anti-rabbit IgG antibody **ab6721** (1/5000)

Exposure time: 1 minute. Expected molecular weight: 134 kDa

Lanes 1 to 3 and 5: 20µg of cell lysate per lane

Lane 4: 20 µl of 1x LDS loading buffer

Lane 1: Human Brain tissue lysate

Lane 2: Human Kidney tissue Lysate

Lane 3: Human liver tissue lysate

Lane 4: 1x LDS loading buffer

Lane 5: Mouse liver lysate

Please note: All products are "FOR RESEARCH USE ONLY. NOT FOR USE IN DIAGNOSTIC PROCEDURES"

Our Abpromise to you: Quality guaranteed and expert technical support

- Replacement or refund for products not performing as stated on the datasheet
- Valid for 12 months from date of delivery

- Response to your inquiry within 24 hours
- We provide support in Chinese, English, French, German, Japanese and Spanish
- Extensive multi-media technical resources to help you
- We investigate all quality concerns to ensure our products perform to the highest standards

If the product does not perform as described on this datasheet, we will offer a refund or replacement. For full details of the Abpromise, please visit <https://www.abcam.cn/abpromise> or contact our technical team.

Terms and conditions

- Guarantee only valid for products bought direct from Abcam or one of our authorized distributors