

### Anti-ITM2B antibody [OT11C11] ab119044

#### 4 图像

#### 概述

|              |  |
|--------------|--|
| <b>产品名称</b>  | Anti-ITM2B抗体[OT11C11]  |
| <b>描述</b>    | 小鼠单克隆抗体[OT11C11] to ITM2B  |
| <b>宿主</b>    | Mouse  |
| <b>经测试应用</b> | <b>适用于:</b> Flow Cyt (Intra), WB, IHC-P  |
| <b>种属反应性</b> | <b>与反应:</b> Human  |
| <b>免疫原</b>   | Recombinant full length Human ITM2B produced in HEK293T cells (NP_068839).   |
| <b>阳性对照</b>  | WB: HEK293T cell lysate transfected with pCMV6-ENTRY ITM2B cDNA IHC: Human kidney tissue Flow Cyt (Intra): HeLa and Jurkat cells.        |
| <b>常规说明</b>  | Dilute in PBS (pH7.3) before use.<br><br>The clone number has been updated from 1C11 to OT11C11, both clone numbers name the same clone. |

This product was changed from ascites to tissue culture supernatant on 5<sup>th</sup> September 2018. Please note that the dilutions may need to be adjusted accordingly. If you have any questions, please do not hesitate to contact our scientific support team.

The Life Science industry has been in the grips of a reproducibility crisis for a number of years. Abcam is leading the way in addressing this with our range of recombinant monoclonal antibodies and knockout edited cell lines for gold-standard validation. Please check that this product meets your needs before purchasing.

If you have any questions, special requirements or concerns, please send us an inquiry and/or contact our Support team ahead of purchase. Recommended alternatives for this product can be found below, along with publications, customer reviews and Q&As

#### 性能

|             |  |
|-------------|--|
| <b>形式</b>   | Liquid   |
| <b>存放说明</b> | Shipped at 4°C. Upon delivery aliquot and store at -20°C. Avoid repeated freeze / thaw cycles. |
| <b>存储溶液</b> | pH: 7.30<br>Preservative: 0.02% Sodium azide   |

|      |   |
|------|---|
| 纯度   | Constituents: 1% BSA, 50% Glycerol, PBS |
| 纯化说明 | Tissue culture supernatant              |
| 克隆   | Purified from TCS.                      |
| 克隆编号 | 单克隆                                     |
| 同种型  | OT11C11                                 |
|      | IgG2a                                   |

## 应用

**The Abpromise guarantee**      **Abpromise™**承诺保证使用ab119044于以下的经测试应用

“应用说明”部分 下显示的仅为推荐的起始稀释度;实际最佳的稀释度/浓度应由使用者检定。

| 应用               | Ab评论 | 说明  |
|------------------|------|---|
| Flow Cyt (Intra) |      | 1/100.<br><b>ab170191</b> - Mouse monoclonal IgG2a, is suitable for use as an isotype control with this antibody. |
| WB               |      | 1/2000. Predicted molecular weight: 30 kDa.   |
| IHC-P            |      | 1/150.  |

## 靶标

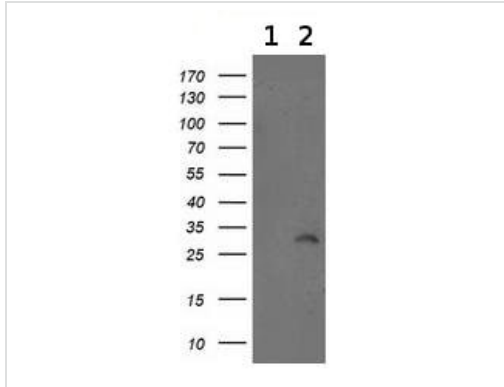
|       |   |
|-------|---|
| 功能    | Functions as a protease inhibitor. Plays a role in APP processing regulating the physiological production of the beta amyloid peptide. Restricts docking of gamma-secretase to APP and access of alpha- and beta-secretase to their cleavage APP sequence.  |
| 组织特异性 | Expressed in brain and in other tissues.  |
| 疾病相关  | Defects in ITM2B are a cause of cerebral amyloid angiopathy ITM2B-related type 1 (CAA-ITM2B1) [MIM:176500]. A disorder characterized by amyloid deposition in the walls of cerebral blood vessels and neurodegeneration in the central nervous system. Cerebral amyloid angiopathy, non-neuritic and perivascular plaques and neurofibrillary tangles are the predominant pathological lesions. Clinical features include progressive mental deterioration, spasticity and muscular rigidity.<br>Defects in ITM2B are a cause of cerebral amyloid angiopathy ITM2B-related type 2 (CAA-ITM2B2) [MIM:117300]; also known as hereditary ophthalmic-oto-encephalopathy. A disorder characterized by amyloid deposition in the walls of the blood vessels of the cerebrum, choroid plexus, cerebellum, spinal cord and retina. Plaques and neurofibrillary tangles are observed in the hippocampus. Clinical features include progressive ataxia, dementia, cataracts and deafness. |
| 序列相似性 | Belongs to the ITM2 family.<br>Contains 1 BRICHOS domain.   |
| 翻译后修饰 | The C-terminal part of the ectodomain is processed by furin and related proteases producing a secreted peptide of 4 to 5 kDa. For the ABRI and ADAN variants the C-terminal secreted peptide is larger and may produce amyloid fibrils responsible for neuronal dysfunction and dementia. The remaining part of the ectodomain containing the BRICHOS domain is cleaved by ADAM10 and is secreted as a peptide of 25 kDa. The membrane-bound N-terminal fragment (NTF) of 22 kDa is   |

further proteolytically processed by SPPL2A and SPPL2B through regulated intramembrane proteolysis producing a secreted peptide (BRI2C) and an intracellular domain (ICD) released in the cytosol.

## 细胞定位

Golgi apparatus membrane. Cell membrane.

## 图片



Western blot - Anti-ITM2B antibody [OT11C11] (ab119044)

**All lanes** : Anti-ITM2B antibody [OT11C11] (ab119044) at 1/2000 dilution

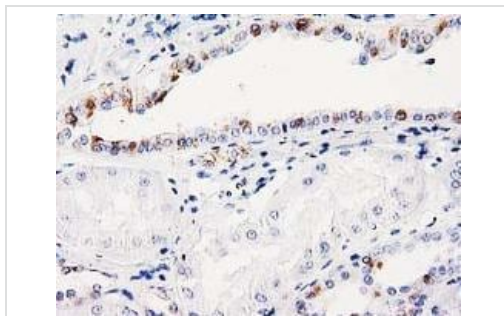
**Lane 1** : HEK293T lysate transfected with pCMV6-ENTRY control cDNA

**Lane 2** : HEK293T lysate transfected with pCMV6-ENTRY ITM2B cDNA

Lysates/proteins at 5 µg per lane.

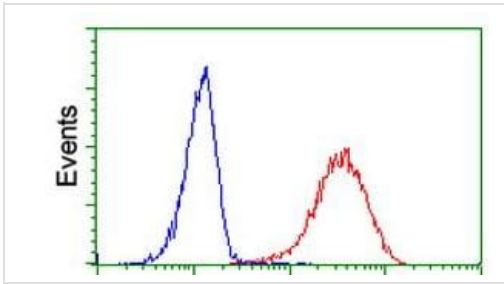
**Predicted band size:** 30 kDa

HEK293T cell lysates were generated from transient transfection of the cDNA clone (RC202377)



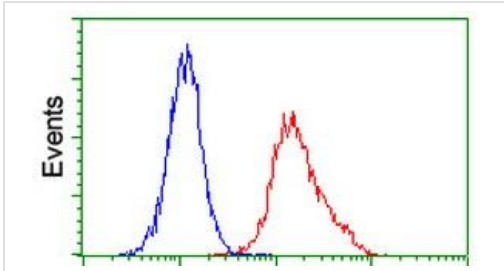
Immunohistochemistry (Formalin/PFA-fixed paraffin-embedded sections) - Anti-ITM2B antibody [OT11C11] (ab119044)

ab119044, at 1/150 dilution, staining ITM2B in paraffin embedded Human kidney by Immunohistochemistry.



Flow Cytometry (Intracellular) - Anti-ITM2B antibody  
[OT1C11] (ab119044)

ab119044 at 1/100 dilution staining ITM2B in HeLa cells by Flow cytometry (Intracellular) (Red) compared to a nonspecific negative control antibody (Blue).



Flow Cytometry (Intracellular) - Anti-ITM2B antibody  
[OT1C11] (ab119044)

ab119044 at 1/100 dilution staining ITM2B in Jurkat cells by Flow cytometry (Intracellular) (Red) compared to a nonspecific negative control antibody (Blue).

**Please note:** All products are "FOR RESEARCH USE ONLY. NOT FOR USE IN DIAGNOSTIC PROCEDURES"

### Our Abpromise to you: Quality guaranteed and expert technical support

- Replacement or refund for products not performing as stated on the datasheet
- Valid for 12 months from date of delivery
- Response to your inquiry within 24 hours
- We provide support in Chinese, English, French, German, Japanese and Spanish
- Extensive multi-media technical resources to help you
- We investigate all quality concerns to ensure our products perform to the highest standards

If the product does not perform as described on this datasheet, we will offer a refund or replacement. For full details of the Abpromise, please visit <https://www.abcam.cn/abpromise> or contact our technical team.

### Terms and conditions

- Guarantee only valid for products bought direct from Abcam or one of our authorized distributors