


Anti-ITM2B antibody ab101522

4 图像

概述

产品名称	Anti-ITM2B抗体
描述	兔多克隆抗体to ITM2B
宿主	Rabbit
经测试应用	适用于: WB, ICC/IF
种属反应性	与反应: Mouse, Rat, Human 预测可用于: Cow, Pig 
免疫原	Recombinant fragment corresponding to Human ITM2B aa 65-234. Database link: Q9Y287
阳性对照	WB: HepG2, HCT116 whole cell lysate. Mouse brain lysate. Rat brain tissue extract. ICC/IF: HeLa cells.
常规说明	<p>The Life Science industry has been in the grips of a reproducibility crisis for a number of years. Abcam is leading the way in addressing this with our range of recombinant monoclonal antibodies and knockout edited cell lines for gold-standard validation. Please check that this product meets your needs before purchasing.</p> <p>If you have any questions, special requirements or concerns, please send us an inquiry and/or contact our Support team ahead of purchase. Recommended alternatives for this product can be found below, along with publications, customer reviews and Q&As</p>

性能

形式	Liquid
存放说明	Shipped at 4°C. Store at +4°C short term (1-2 weeks). Upon delivery aliquot. Store at -20°C or -80°C. Avoid freeze / thaw cycle.
存储溶液	pH: 7.00 Preservative: 0.025% Proclin 300 Constituents: 79% PBS, 20% Glycerol (glycerin, glycerine)
纯度	Immunogen affinity purified
克隆	多克隆
同种型	IgG

应用

The Abpromise guarantee **Abpromise™**承诺保证使用ab101522于以下的经测试应用

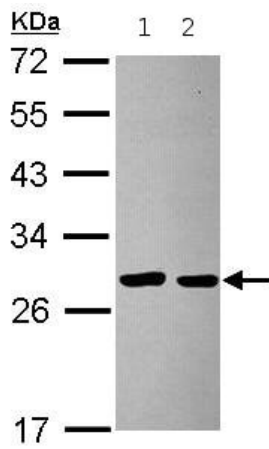
“应用说明”部分下显示的仅为推荐的起始稀释度;实际最佳的稀释度/浓度应由使用者检定。

应用	Ab评论	说明
WB		1/500 - 1/3000. Predicted molecular weight: 30 kDa.
ICC/IF		1/100 - 1/1000.

靶标

功能	Functions as a protease inhibitor. Plays a role in APP processing regulating the physiological production of the beta amyloid peptide. Restricts docking of gamma-secretase to APP and access of alpha- and beta-secretase to their cleavage APP sequence.
组织特异性	Expressed in brain and in other tissues.
疾病相关	<p>Defects in ITM2B are a cause of cerebral amyloid angiopathy ITM2B-related type 1 (CAA-ITM2B1) [MIM:176500]. A disorder characterized by amyloid deposition in the walls of cerebral blood vessels and neurodegeneration in the central nervous system. Cerebral amyloid angiopathy, non-neuritic and perivascular plaques and neurofibrillary tangles are the predominant pathological lesions. Clinical features include progressive mental deterioration, spasticity and muscular rigidity.</p> <p>Defects in ITM2B are a cause of cerebral amyloid angiopathy ITM2B-related type 2 (CAA-ITM2B2) [MIM:117300]; also known as hereditary ophthalmic-oto-encephalica. A disorder characterized by amyloid deposition in the walls of the blood vessels of the cerebrum, choroid plexus, cerebellum, spinal cord and retina. Plaques and neurofibrillary tangles are observed in the hippocampus. Clinical features include progressive ataxia, dementia, cataracts and deafness.</p>
序列相似性	<p>Belongs to the ITM2 family.</p> <p>Contains 1 BRICHOS domain.</p>
翻译后修饰	The C-terminal part of the ectodomain is processed by furin and related proteases producing a secreted peptide of 4 to 5 kDa. For the ABRI and ADAN variants the C-terminal secreted peptide is larger and may produce amyloid fibrils responsible for neuronal dysfunction and dementia. The remaining part of the ectodomain containing the BRICHOS domain is cleaved by ADAM10 and is secreted as a peptide of 25 kDa. The membrane-bound N-terminal fragment (NTF) of 22 kDa is further proteolytically processed by SPPL2A and SPPL2B through regulated intramembrane proteolysis producing a secreted peptide (BR12C) and an intracellular domain (ICD) released in the cytosol.
细胞定位	Golgi apparatus membrane. Cell membrane.

图片



Western blot - Anti-ITM2B antibody (ab101522)

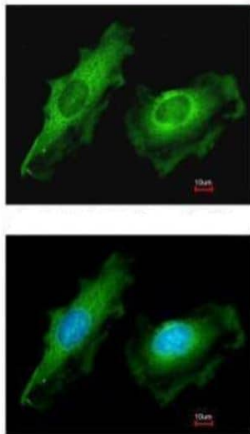
All lanes : Anti-ITM2B antibody (ab101522) at 1/1000 dilution

Lane 1 : HepG2 whole cell lysate

Lane 2 : HCT116 whole cell lysate

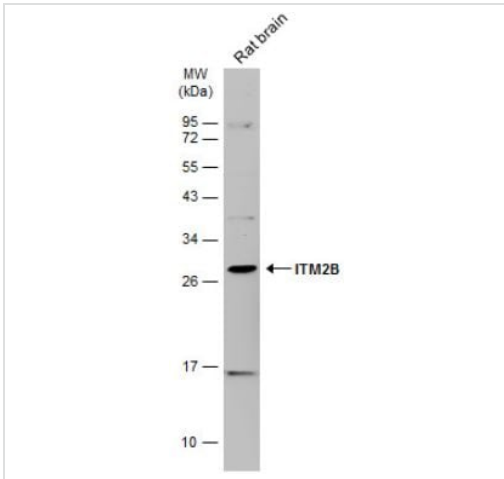
Lysates/proteins at 30 µg per lane.

Predicted band size: 30 kDa



HeLa cells stained for ITM2B (green) using ab101522 at 1/200 dilution in ICC/IF.

Immunocytochemistry/ Immunofluorescence - Anti-ITM2B antibody (ab101522)

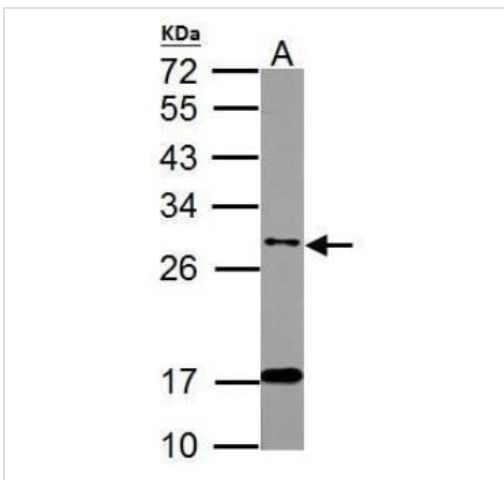


Western blot - Anti-ITM2B antibody (ab101522)

Anti-ITM2B antibody (ab101522) at 1/1000 dilution + Rat brain tissue extract at 50 μ g

Predicted band size: 30 kDa

12% SDS-PAGE



Western blot - Anti-ITM2B antibody (ab101522)

Anti-ITM2B antibody (ab101522) at 1/1000 dilution + Mouse brain lysate at 50 μ g

Predicted band size: 30 kDa

12 % SDS-PAGE

Please note: All products are "FOR RESEARCH USE ONLY. NOT FOR USE IN DIAGNOSTIC PROCEDURES"

Our Abpromise to you: Quality guaranteed and expert technical support

- Replacement or refund for products not performing as stated on the datasheet
- Valid for 12 months from date of delivery
- Response to your inquiry within 24 hours
- We provide support in Chinese, English, French, German, Japanese and Spanish
- Extensive multi-media technical resources to help you
- We investigate all quality concerns to ensure our products perform to the highest standards

If the product does not perform as described on this datasheet, we will offer a refund or replacement. For full details of the Abpromise, please visit <https://www.abcam.cn/abpromise> or contact our technical team.

Terms and conditions

- Guarantee only valid for products bought direct from Abcam or one of our authorized distributors