

### Anti-Islet 1 antibody [1H9] ab86472

敲除验证

★★★★☆ 1 Abreviews 17 References 6 图像

#### 概述

产品名称	Anti-Islet 1 抗体[1H9]
描述	小鼠单克隆抗体[1H9] to Islet 1
宿主	Mouse
特异性	In western blot, we observe a specific band at ~40kDa which is not seen in KO cell lines. A cross-reactive band was observed in the wild-type and knockout cells. The additional band below this band of interest is seen at ~38kDa in both the WT and KO cells. We are unsure as to the identity of these extra bands.
经测试应用	适用于: Flow Cyt, WB, IHC-P, ICC/IF
种属反应性	与反应: Human, Recombinant fragment
免疫原	Recombinant fragment corresponding to Human Islet 1 aa 150-349. Purified recombinant fragment of Human Islet 1 expressed in E. Coli Database link: <a href="#">P61371</a>
阳性对照	Transfected HEK293 cell lysate. Human lung cancer tissue and cervical carcinoma tissue.
常规说明	This product was changed from ascites to supernatant. Lot no's high than GR141006-29 are from Tissue Culture Supernatant  The Life Science industry has been in the grips of a reproducibility crisis for a number of years. Abcam is leading the way in addressing this with our range of recombinant monoclonal antibodies and knockout edited cell lines for gold-standard validation. Please check that this product meets your needs before purchasing.  If you have any questions, special requirements or concerns, please send us an inquiry and/or contact our Support team ahead of purchase. Recommended alternatives for this product can be found below, along with publications, customer reviews and Q&As

#### 性能

形式	Liquid
存放说明	Shipped at 4°C. Upon delivery aliquot and store at -20°C. Avoid freeze / thaw cycles.
存储溶液	Preservative: 0.05% Sodium azide Constituent: PBS

纯度	Protein G purified
纯化说明	Purified from tissue culture supernatant.
克隆	单克隆
克隆编号	1H9
同种型	IgG1

应用

The Abpromise guarantee      **Abpromise™**承诺保证使用ab86472于以下的经测试应用

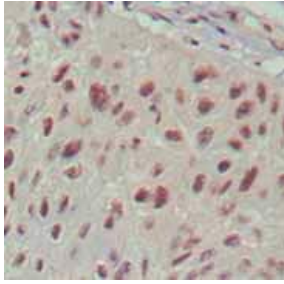
“应用说明”部分 下显示的仅为推荐的起始稀释度;实际最佳的稀释度/浓度应由使用者检定。

应用	Ab评论	说明
Flow Cyt		1/50 - 1/100. <b>ab170190</b> - Mouse monoclonal IgG1, is suitable for use as an isotype control with this antibody.
WB		1/500 - 1/2000. Predicted molecular weight: 39 kDa.
IHC-P		1/200 - 1/1000.
ICC/IF		1/200 - 1/1000.

靶标

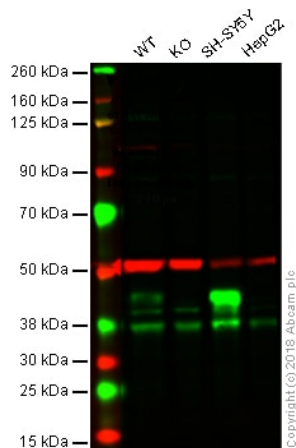
功能	Binds to one of the cis-acting domain of the insulin gene enhancer.
组织特异性	Expressed in subsets of neurons of the adrenal medulla and dorsal root ganglion, inner nuclear and ganglion cell layers in the retina, the pineal and some regions of the brain.
序列相似性	Contains 1 homeobox DNA-binding domain. Contains 2 LIM zinc-binding domains.
细胞定位	Nucleus.

图片



Immunohistochemistry (Formalin/PFA-fixed paraffin-embedded sections) - Anti-Islet 1 antibody [1H9] (ab86472)

ab86472 at a 1/200 dilution staining Islet 1 in human lung cancer tissue. DAB staining shows nuclear localisation.



Western blot - Anti-Islet 1 antibody [1H9] (ab86472)

**All lanes :** Anti-Islet 1 antibody [1H9] (ab86472) at 1/500 dilution

**Lane 1 :** Wild-type HAP1 whole cell lysate

**Lane 2 :** ISL1 (Islet 1) knockout HAP1 whole cell lysate

**Lane 3 :** SH-SY5Y whole cell lysate

**Lane 4 :** HepG2 whole cell lysate

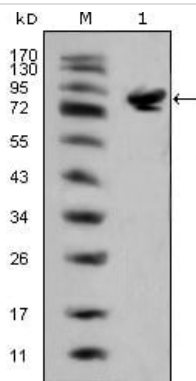
Lysates/proteins at 20 µg per lane.

**Predicted band size:** 39 kDa

**Observed band size:** 40 kDa

**Lanes 1 -4:** Merged signal (red and green). Green - ab86472 observed at 40 kDa. Red - loading control, **ab176560**, observed at 50 kDa.

ab86472 was shown to recognize Islet 1 in wild-type HAP1 cells as signal was lost at the expected MW in Islet 1 knockout cells. Additional cross-reactive bands were observed in the wild-type and knockout cells. Wild-type and Islet 1 knockout samples were subjected to SDS-PAGE. ab86472 and **ab176560** (Rabbit anti-alpha Tubulin loading control) were incubated overnight at 4°C at 1/500 dilution and 1/20000 dilution respectively. Blots were developed with Goat anti-Mouse IgG H&L (IRDye® 800CW) preabsorbed **ab216772** and Goat anti-Rabbit IgG H&L (IRDye® 680RD) preabsorbed **ab216777** secondary antibodies at 1/20000 dilution for 1 hour at room temperature before imaging.

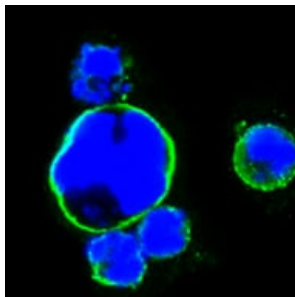


Western blot - Anti-Islet 1 antibody [1H9] (ab86472)

Anti-Islet 1 antibody [1H9] (ab86472) at 1/500 dilution + HEK293 cells transfected with full length Islet 1 (aa1-349)-hlgGFc

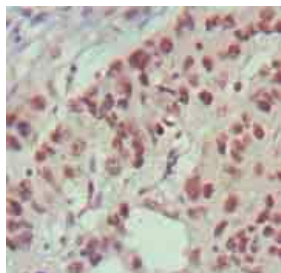
**Predicted band size:** 39 kDa

Note: The molecular weight is larger than expected, as the recombinant protein is not the endogenous protein, but rather the fc-fusion protein



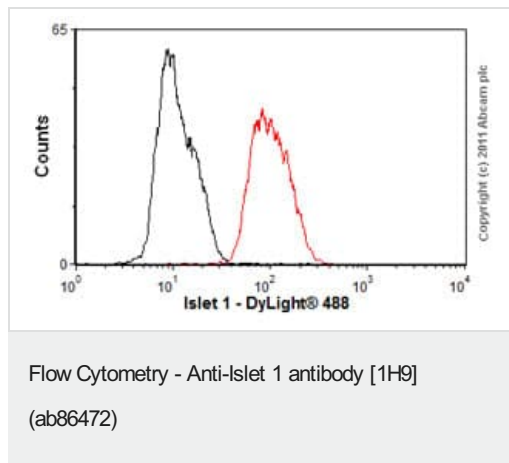
Immunocytochemistry/ Immunofluorescence - Anti-Islet 1 antibody [1H9] (ab86472)

Confocal immunofluorescence analysis of HEK293 cells trasfected with full-length Islet 1-hlgGFc using ab86472 at 1/150 dilution (green). Blue: DRAQ5 fluorescent DNA dye.



Immunohistochemistry (Formalin/PFA-fixed paraffin-embedded sections) - Anti-Islet 1 antibody [1H9] (ab86472)

ab86472 at a 1/200 dilution staining Islet 1 in human cervical carcinoma tissue. DAB staining shows nuclear localization.



Overlay histogram showing SH-SY5Y cells stained with ab86472 (red line). The cells were fixed with 80% methanol (5 min) and then permeabilized with 0.1% PBS-Tween for 20 min. The cells were then incubated in 1x PBS / 10% normal goat serum / 0.3M glycine to block non-specific protein-protein interactions followed by the antibody (ab86472, 1/50 dilution) for 30 min at 22°C. The secondary antibody used was DyLight® 488 goat anti-mouse IgG (H+L) (**ab96879**) at 1/500 dilution for 30 min at 22°C. Isotype control antibody (black line) was mouse IgG1 [ICIGG1] (**ab91353**, 2µg/1x10<sup>6</sup> cells) used under the same conditions. Acquisition of >5,000 events was performed. This antibody gave a positive result in SH-SY5Y cells fixed with 4% paraformaldehyde (10 min)/permeabilized in 0.1% PBS-Tween for 20 min used under the same conditions.

**Please note:** All products are "FOR RESEARCH USE ONLY. NOT FOR USE IN DIAGNOSTIC PROCEDURES"

### Our Abpromise to you: Quality guaranteed and expert technical support

- Replacement or refund for products not performing as stated on the datasheet
- Valid for 12 months from date of delivery
- Response to your inquiry within 24 hours
- We provide support in Chinese, English, French, German, Japanese and Spanish
- Extensive multi-media technical resources to help you
- We investigate all quality concerns to ensure our products perform to the highest standards

If the product does not perform as described on this datasheet, we will offer a refund or replacement. For full details of the Abpromise, please visit <https://www.abcam.cn/abpromise> or contact our technical team.

### Terms and conditions

- Guarantee only valid for products bought direct from Abcam or one of our authorized distributors