

# Anti-ISG20L2 antibody ab121969

## 2 图像

### 概述

产品名称	Anti-ISG20L2抗体
描述	兔多克隆抗体to ISG20L2
宿主	Rabbit
经测试应用	适用于: IHC-P, ICC/IF
种属反应性	与反应: Human
免疫原	antigen: MSTLLLNLDF GEPppKKALE GNAKHRNFVK KRRLLERRGF LSKKNQPPSK APKLHSEPSK KGETPTVD, corresponding to amino acids 1-68 of Human ISG20L2 (Q9H9L3). <a href="#">Run BLAST with ExPASy</a> <a href="#">Run BLAST with NCBI</a>
阳性对照	Human pancreas tissue. Human cell line U-2 OS.
常规说明	<p>The Life Science industry has been in the grips of a reproducibility crisis for a number of years. Abcam is leading the way in addressing this with our range of recombinant monoclonal antibodies and knockout edited cell lines for gold-standard validation. Please check that this product meets your needs before purchasing.</p> <p>If you have any questions, special requirements or concerns, please send us an inquiry and/or contact our Support team ahead of purchase. Recommended alternatives for this product can be found below, along with publications, customer reviews and Q&amp;As</p>

### 性能

形式	Liquid
存放说明	Shipped at 4°C. Upon delivery aliquot and store at -20°C. Avoid repeated freeze / thaw cycles.
存储溶液	pH: 7.20 Preservative: 0.02% Sodium azide Constituents: 59% PBS, 40% Glycerol (glycerin, glycerine)
纯度	Immunogen affinity purified
克隆	多克隆
同种型	IgG

### 应用

## The Abpromise guarantee

**Abpromise™** 承诺保证使用 ab121969 于以下的经测试应用

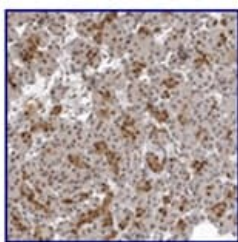
“应用说明”部分 下显示的仅为推荐的起始稀释度;实际最佳的稀释度/浓度应由使用者检定。

应用	Ab评论	说明
IHC-P		1/50 - 1/200. Perform heat mediated antigen retrieval with citrate buffer pH 6 before commencing with IHC staining protocol.
ICC/IF		Use a concentration of 1 - 4 µg/ml. The following steps are recommended prior to antibody incubation: cells fixation in ice cold 4% paraformaldehyde pH 7.2-7.3, followed by permeabilization with 0.1% Triton X-100 in PBS for 3x5 minutes.

## 靶标

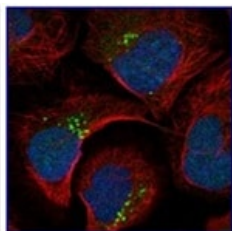
功能	3'-> 5'-exoribonuclease involved in ribosome biogenesis in the processing of the 12S pre-rRNA. Displays a strong specificity for a 3'-end containing a free hydroxyl group.
序列相似性	Contains 1 exonuclease domain.
细胞定位	Nucleus > nucleolus.

## 图片



Immunohistochemistry (Formalin/PFA-fixed paraffin-embedded sections) - Anti-ISG20L2 antibody (ab121969)

ab121969, at 1/50 dilution, staining ISG20L2 in formalin-fixed, paraffin-embedded Human pancreas tissue.



Immunocytochemistry/ Immunofluorescence - Anti-ISG20L2 antibody (ab121969)

ab121969, at 4 µg/ml, staining SG20L2 in formalin-fixed, paraffin-embedded Human cell line U-2 OS.

**Please note:** All products are "FOR RESEARCH USE ONLY. NOT FOR USE IN DIAGNOSTIC PROCEDURES"

## **Our Abpromise to you: Quality guaranteed and expert technical support**

---

- Replacement or refund for products not performing as stated on the datasheet
- Valid for 12 months from date of delivery
- Response to your inquiry within 24 hours
  
- We provide support in Chinese, English, French, German, Japanese and Spanish
- Extensive multi-media technical resources to help you
- We investigate all quality concerns to ensure our products perform to the highest standards

If the product does not perform as described on this datasheet, we will offer a refund or replacement. For full details of the Abpromise, please visit <https://www.abcam.cn/abpromise> or contact our technical team.

## **Terms and conditions**

---

- Guarantee only valid for products bought direct from Abcam or one of our authorized distributors