

Anti-IRX5 antibody ab100939

1 图像

概述

产品名称	Anti-IRX5抗体
描述	兔多克隆抗体to IRX5
宿主	Rabbit
经测试应用	适用于: WB
种属反应性	与反应: Human 预测可用于: Mouse, Rat, Horse, Cow, Dog, Zebrafish, Macaque monkey 
免疫原	Synthetic peptide corresponding to Human IRX5 aa 150-250 conjugated to keyhole limpet haemocyanin. (Peptide available as ab114000)
阳性对照	This antibody gave a positive signal in the following human whole cell lysates: HEK293; HeLa; PC3; DU145.
常规说明	<p>The Life Science industry has been in the grips of a reproducibility crisis for a number of years. Abcam is leading the way in addressing this with our range of recombinant monoclonal antibodies and knockout edited cell lines for gold-standard validation. Please check that this product meets your needs before purchasing.</p> <p>If you have any questions, special requirements or concerns, please send us an inquiry and/or contact our Support team ahead of purchase. Recommended alternatives for this product can be found below, along with publications, customer reviews and Q&As</p>

性能

形式	Liquid
存放说明	Shipped at 4°C. Store at +4°C short term (1-2 weeks). Upon delivery aliquot. Store at -20°C or -80°C. Avoid freeze / thaw cycle.
存储溶液	pH: 7.40 Preservative: 0.02% Sodium azide Constituent: PBS
	Batches of this product that have a concentration < 1mg/ml may have BSA added as a stabilising agent. If you would like information about the formulation of a specific lot, please contact our scientific support team who will be happy to help.

纯度	Immunogen affinity purified
克隆	多克隆
同种型	IgG

应用

The Abpromise guarantee **Abpromise™**承诺保证使用ab100939于以下的经测试应用

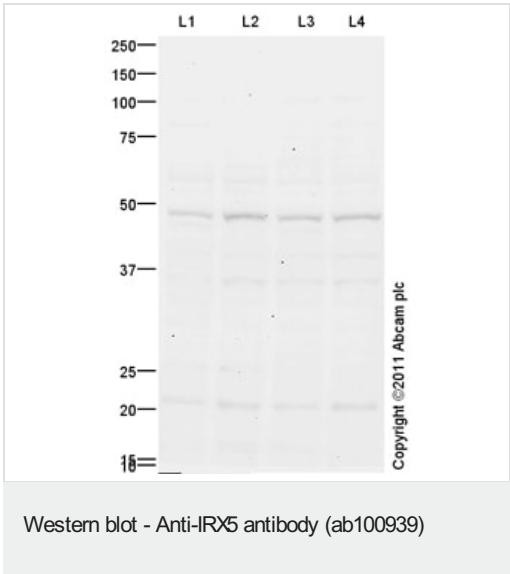
“应用说明”部分 下显示的仅为推荐的起始稀释度;实际最佳的稀释度/浓度应由使用者检定。

应用	Ab评论	说明
WB		1/250. Detects a band of approximately 50 kDa (predicted molecular weight: 50 kDa).

靶标

功能	Establishes the cardiac repolarization gradient by its repressive actions on the KCND2 potassium-channel gene. Required for retinal cone bipolar cell differentiation. May regulate contrast adaptation in the retina and control specific aspects of visual function in circuits of the mammalian retina (By similarity). Could be involved in the regulation of both the cell cycle and apoptosis in prostate cancer cells.
序列相似性	Belongs to the TALE/IRO homeobox family. Contains 1 homeobox DNA-binding domain.
细胞定位	Nucleus.

图片



All lanes : Anti-IRX5 antibody (ab100939) at 1/250 dilution

Lane 1 : HEK293 (Human embryonic kidney cell line) Whole Cell Lysate

Lane 2 : HeLa (Human epithelial carcinoma cell line) Whole Cell Lysate

Lane 3 : PC3 (Human prostate carcinoma cell line) Whole Cell Lysate Whole Cell Lysate

Lane 4 : DU 145 (Human prostate carcinoma cell line) Whole Cell Lysate

Lysates/proteins at 20 µg per lane.

Secondary

All lanes : Goat Anti-Rabbit IgG H&L (HRP) preadsorbed (**ab97080**) at 1/5000 dilution

Developed using the ECL technique.

Performed under reducing conditions.

Predicted band size: 50 kDa

Observed band size: 50 kDa

Additional bands at: 21 kDa. We are unsure as to the identity of these extra bands.

Exposure time: 20 minutes

Please note: All products are "FOR RESEARCH USE ONLY. NOT FOR USE IN DIAGNOSTIC PROCEDURES"

Our Abpromise to you: Quality guaranteed and expert technical support

- Replacement or refund for products not performing as stated on the datasheet
- Valid for 12 months from date of delivery
- Response to your inquiry within 24 hours
- We provide support in Chinese, English, French, German, Japanese and Spanish
- Extensive multi-media technical resources to help you
- We investigate all quality concerns to ensure our products perform to the highest standards

If the product does not perform as described on this datasheet, we will offer a refund or replacement. For full details of the Abpromise, please visit <https://www.abcam.cn/abpromise> or contact our technical team.

Terms and conditions

- Guarantee only valid for products bought direct from Abcam or one of our authorized distributors