

# Anti-IRS1 antibody ab52167

**56 References**   **3 图像**

### 概述

产品名称	Anti-IRS1抗体
描述	兔多克隆抗体to IRS1
宿主	Rabbit
经测试应用	适用于: ELISA, WB, IHC-P, ICC/IF
种属反应性	与反应: Mouse, Rat, Human
免疫原	Synthetic peptide corresponding to Human IRS1. Synthetic non-phosphopeptide derived from human IRS1 around the phosphorylation site of serine 307 (T-E-S-I-T). Database link: <a href="#">P35568</a>
常规说明	<p>The Life Science industry has been in the grips of a reproducibility crisis for a number of years. Abcam is leading the way in addressing this with our range of recombinant monoclonal antibodies and knockout edited cell lines for gold-standard validation. Please check that this product meets your needs before purchasing.</p> <p>If you have any questions, special requirements or concerns, please send us an inquiry and/or contact our Support team ahead of purchase. Recommended alternatives for this product can be found below, along with publications, customer reviews and Q&amp;As</p>

### 性能

形式	Liquid
存放说明	Shipped at 4°C. Upon delivery aliquot and store at -20°C. Avoid freeze / thaw cycles.
存储溶液	pH: 7 Preservative: 0.02% Sodium azide Constituents: 50% Glycerol, 0.87% Sodium chloride, PBS
纯度	Without Mg+2 and Ca+2 Immunogen affinity purified
克隆	多克隆
同种型	IgG

### 应用

## The Abpromise guarantee

**Abpromise™** 承诺保证使用ab52167于以下的经测试应用

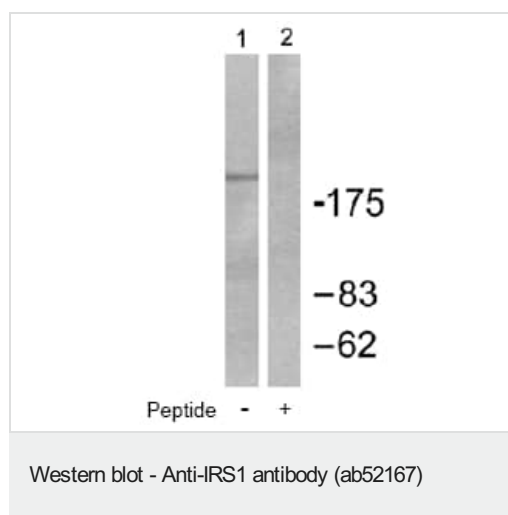
“应用说明”部分 下显示的仅为推荐的起始稀释度;实际最佳的稀释度/浓度应由使用者检定。

应用	Ab评论	说明
ELISA		Use at an assay dependent concentration.
WB		1/500 - 1/1000. Predicted molecular weight: 132 kDa.
IHC-P		1/50 - 1/100. Antigen retrieval: Microwave method - put the slice into 10 mmol/L citrate buffer (pH 6.0), microwave high temperature for 5 minutes, and then medium temperature for 15 minutes. Primary antibody incubation: 1 hour at 37°C Secondary antibody: Poly-HRP-Anti Mouse/Rabbit IgG, 50 µL for 30 minutes
ICC/IF		Use a concentration of 1 - 5 µg/ml.

## 靶标

功能	May mediate the control of various cellular processes by insulin. When phosphorylated by the insulin receptor binds specifically to various cellular proteins containing SH2 domains such as phosphatidylinositol 3-kinase p85 subunit or GRB2. Activates phosphatidylinositol 3-kinase when bound to the regulatory p85 subunit.
疾病相关	Polymorphisms in IRS1 may be involved in the etiology of non-insulin-dependent diabetes mellitus (NIDDM) [MIM:125853].
序列相似性	Contains 1 IRS-type PTB domain. Contains 1 PH domain.
翻译后修饰	Serine phosphorylation of IRS1 is a mechanism for insulin resistance. Ser-312 phosphorylation inhibits insulin action through disruption of IRS1 interaction with the insulin receptor. Phosphorylation of Tyr-896 is required for GRB2-binding.

## 图片



**All lanes :** Anti-IRS1 antibody (ab52167) at 1/500 dilution

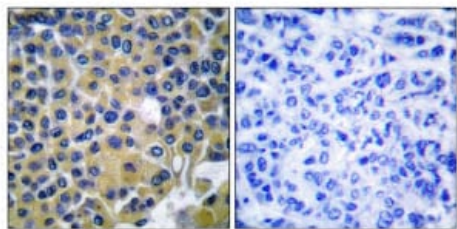
**Lane 1 :** A431 cell extract

**Lane 2 :** A431 cell extract with immunising peptide

Lysates/proteins at 5 µg per lane.

**Predicted band size:** 132 kDa

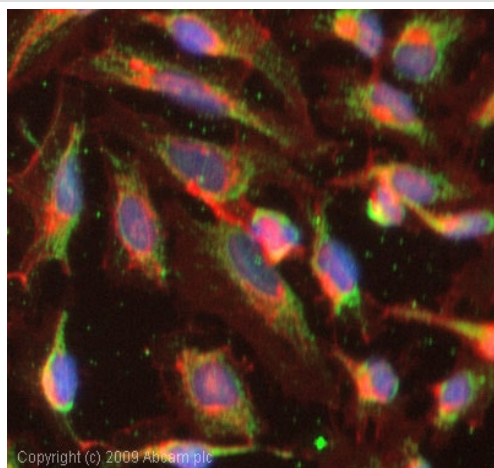
**Observed band size:** >175 kDa



Peptide                      -                      +

Immunohistochemistry (Formalin/PFA-fixed paraffin-embedded sections) - Anti-IRS1 antibody (ab52167)

ab52167 at 1/50 dilution staining IRS1 in human breast carcinoma by Immunohistochemistry, Paraffin embedded tissue, in the absence or presence of the immunising peptide.



Immunocytochemistry/ Immunofluorescence - Anti-IRS1 antibody (ab52167)

ICC/IF image of ab52167 stained MCF7 cells. The cells were 4% PFA fixed (10 min) and then incubated in 1%BSA / 10% normal goat serum / 0.3M glycine in 0.1% PBS-Tween for 1h to permeabilise the cells and block non-specific protein-protein interactions. The cells were then incubated with the antibody (ab52167, 1µg/ml) overnight at +4°C. The secondary antibody (green) was Alexa Fluor® 488 goat anti-rabbit IgG (H+L) used at a 1/1000 dilution for 1h. Alexa Fluor® 594 WGA was used to label plasma membranes (red) at a 1/200 dilution for 1h. DAPI was used to stain the cell nuclei (blue) at a concentration of 1.43µM.

**Please note:** All products are "FOR RESEARCH USE ONLY. NOT FOR USE IN DIAGNOSTIC PROCEDURES"

### Our Abpromise to you: Quality guaranteed and expert technical support

- Replacement or refund for products not performing as stated on the datasheet
- Valid for 12 months from date of delivery
- Response to your inquiry within 24 hours
- We provide support in Chinese, English, French, German, Japanese and Spanish
- Extensive multi-media technical resources to help you
- We investigate all quality concerns to ensure our products perform to the highest standards

If the product does not perform as described on this datasheet, we will offer a refund or replacement. For full details of the Abpromise, please visit <https://www.abcam.cn/abpromise> or contact our technical team.

### Terms and conditions

- Guarantee only valid for products bought direct from Abcam or one of our authorized distributors